

T Y P O L O G Y O F D W E L L I N G S

Alexis Pontvik Architect MSA/SAR RIBA • Royal Institute of Technology Stockholm

URBAN - SUBURBIAN



Paris, Rue de Rivoli, first half of 19th century



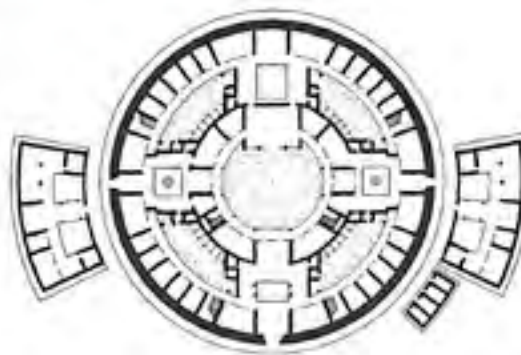
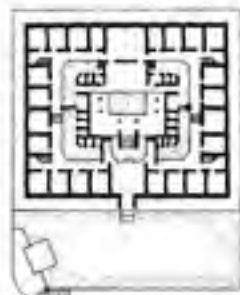


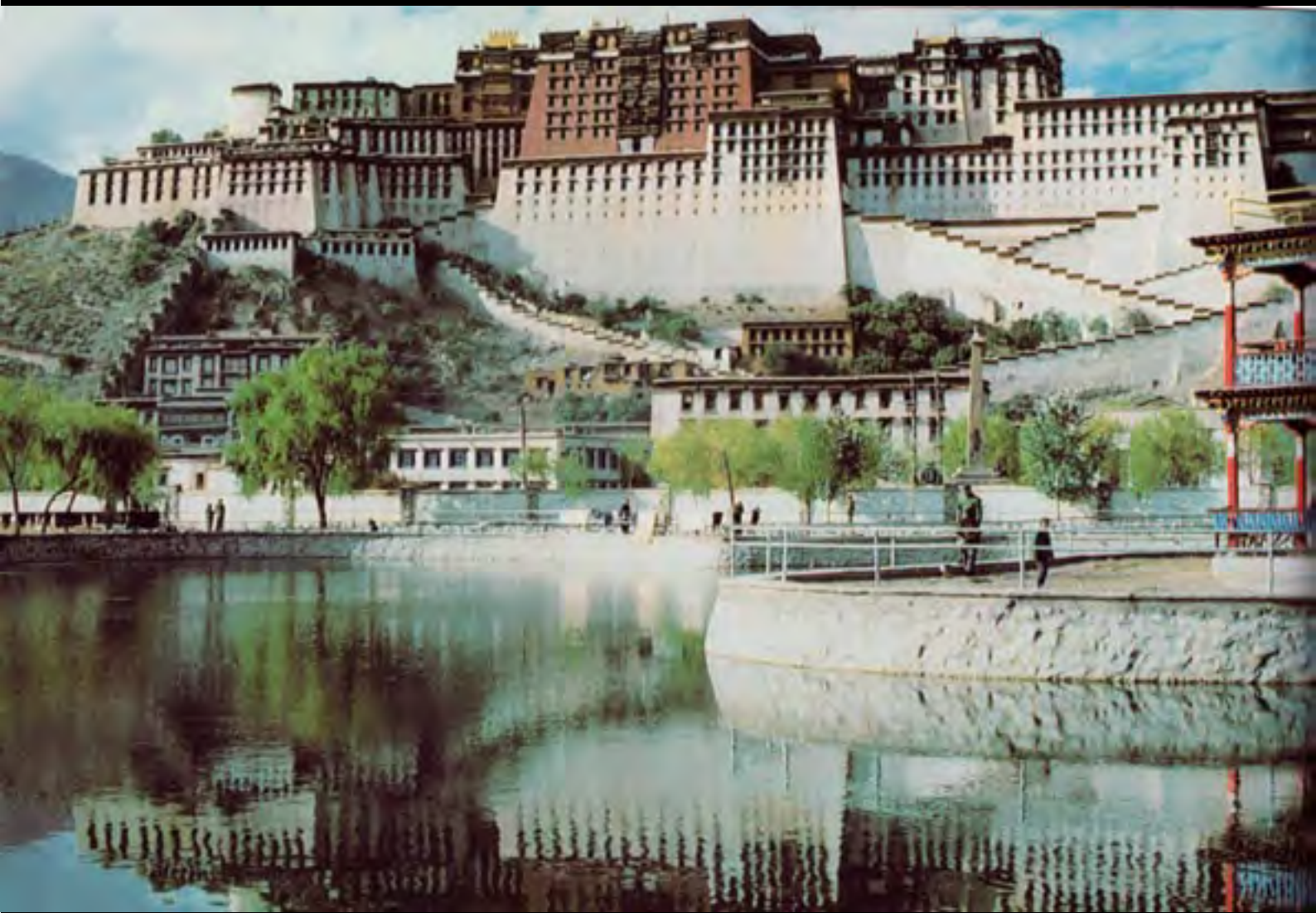


Rosengård Malmö, Sweden, 1960ies

INDEPEDANT STRUCTURES







Potala Palace, Lhasa, Tibet

URBAN PLANNING

TERRACE-HOUSES

TOWERS

MEGABLOCK

'SIEDLUNGEN'
HOUSING ESTATES

RETORIC

COMPACT HOUSING, HIGH DENSITY

URBAN VILLA

STEPPED HILLSIDE HOUSES
AND TERRACED HOUSES

COMPOSITIONS

CLUSTERBLOCKS

LIVING IN MONUMENTS/
PALACE FOR THE PEOPLE

MEGASTRUCTURS

EXPERIMENTS

POINT BLOCKS

SMALHUS
'NARROW BLOCK'

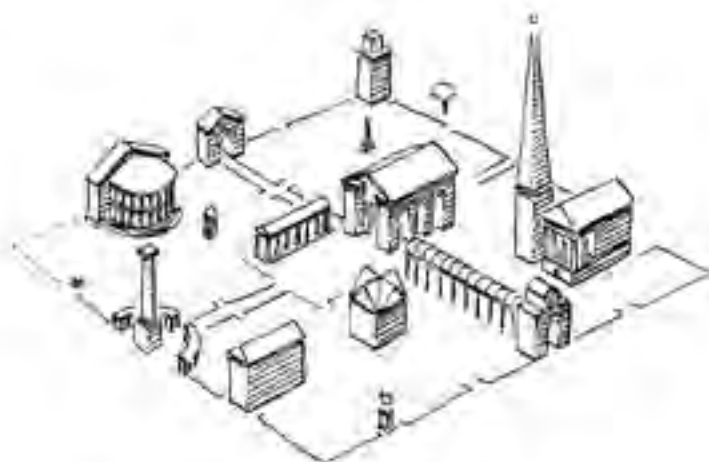
HOUSING FOR THE POOR

'LINKED BLOCK'

CITY-BLOCK

LINEAR HOUSING

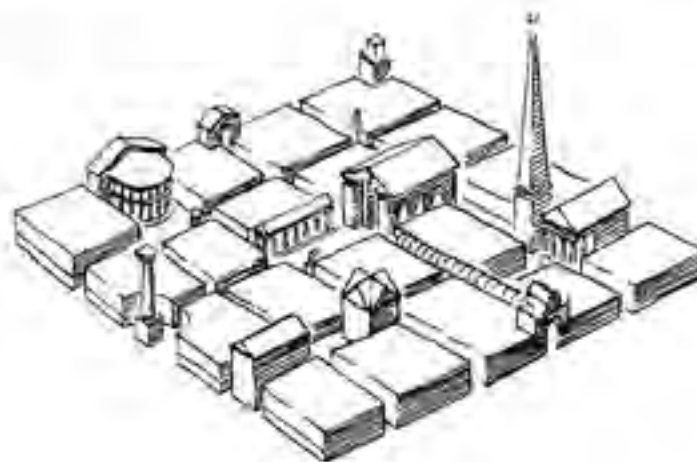
URBAN PLANNING



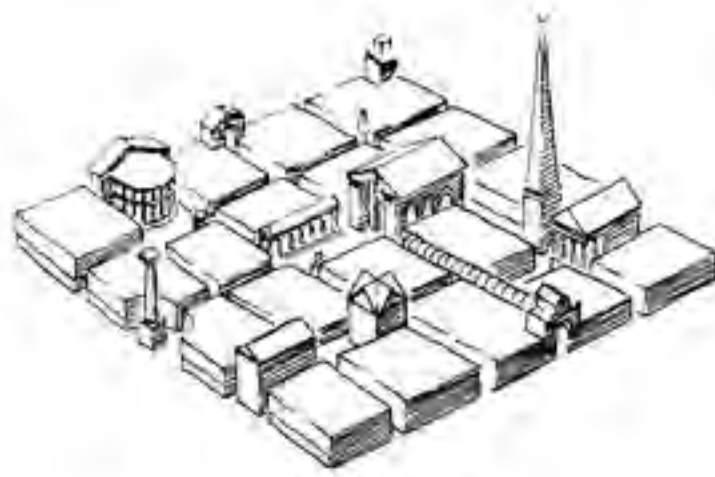
RES PUBLICA



RES (ECONOMICA) PRIVATA

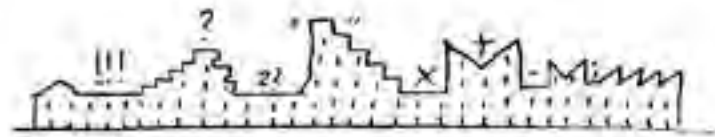
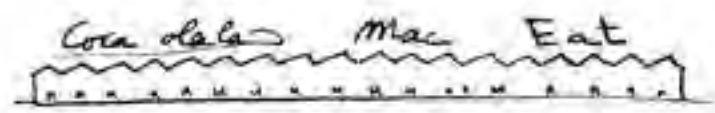


CIVITAS



CIVITAS

ZONING ⇒ MEGASTRUCTURES



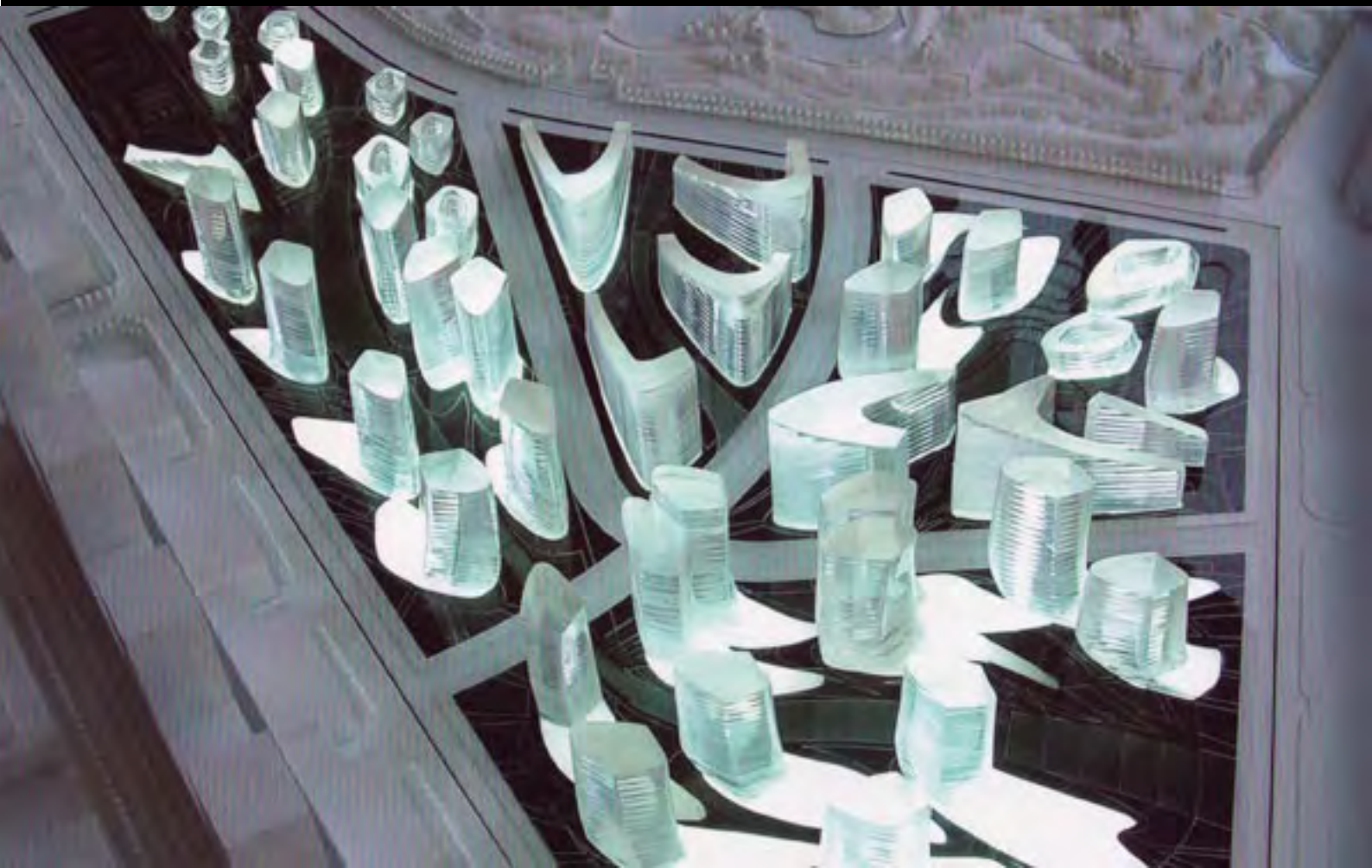




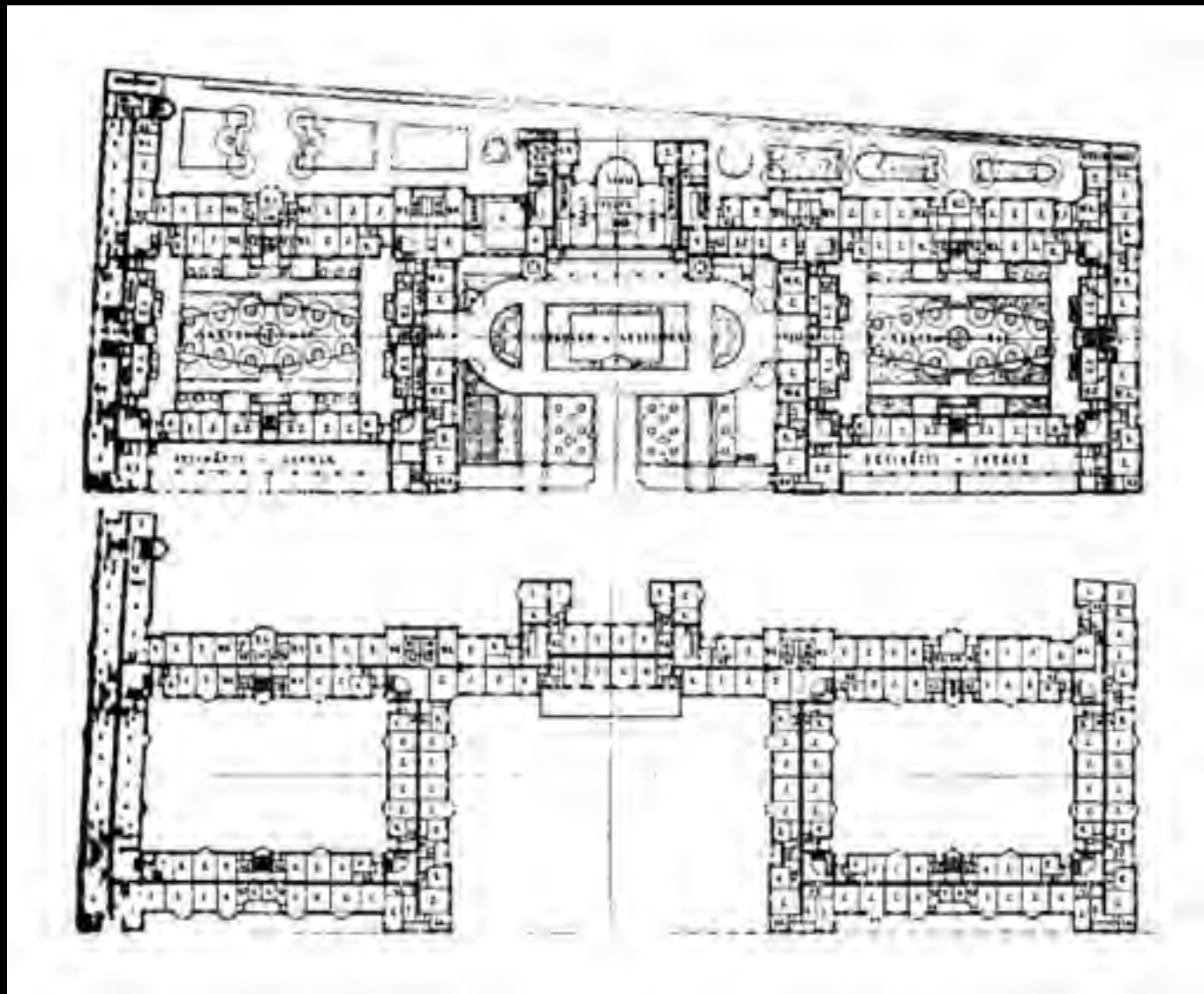
FORMALISTIC HOUSING







***LIVING IN MONUMENTS/
PALACE FOR THE PEOPLE***







Henri Sauvage 'Concours Rosenthal de la Place de la Victoire', Porte Maillot, Paris, 1930-1931



Henri Sauvage 'Metropolis', Immeubles en gradins en front de Seine, Paris XVIe 1928

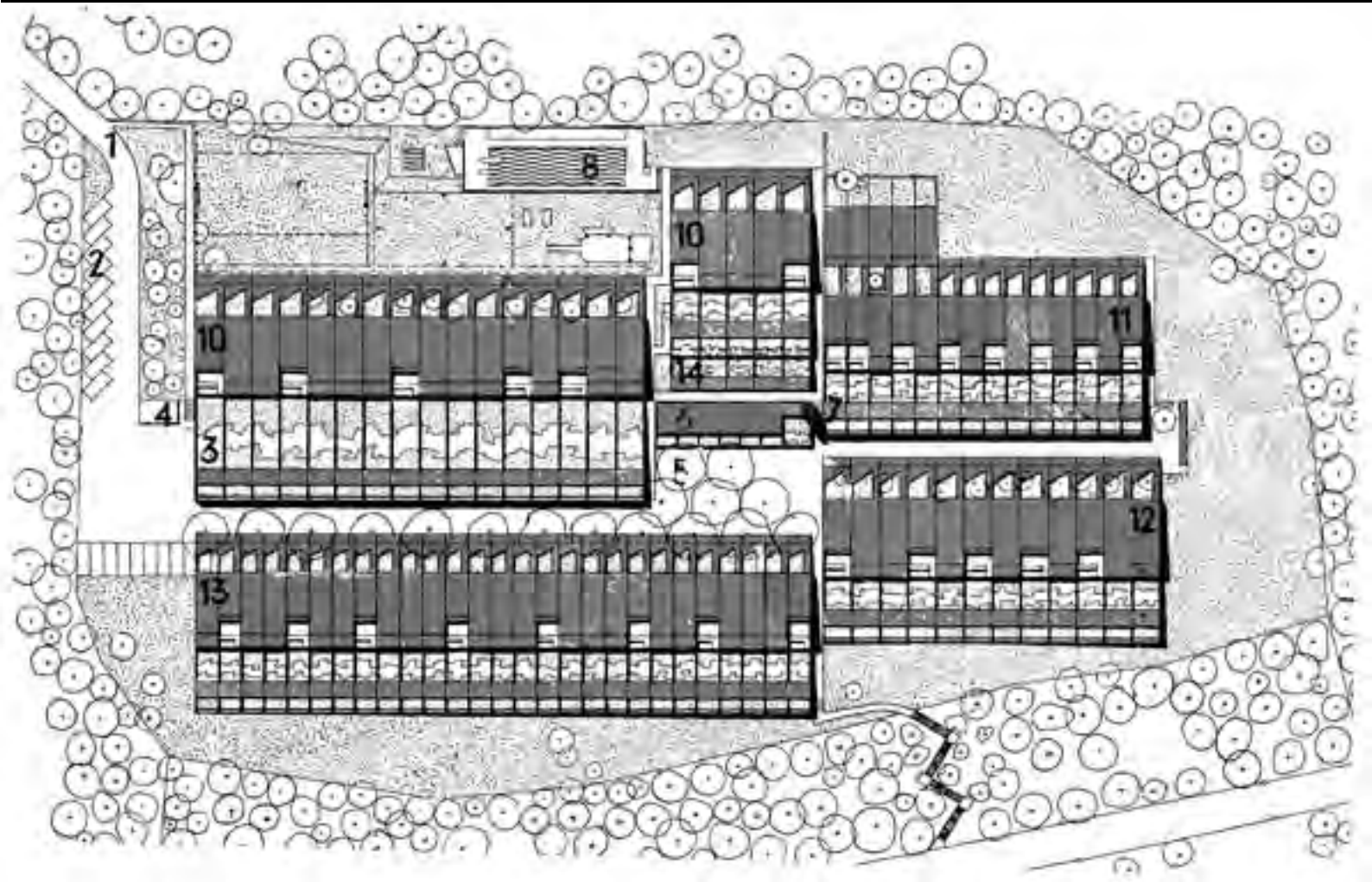
'SIEDLUNGEN'
HOUSING ESTATES

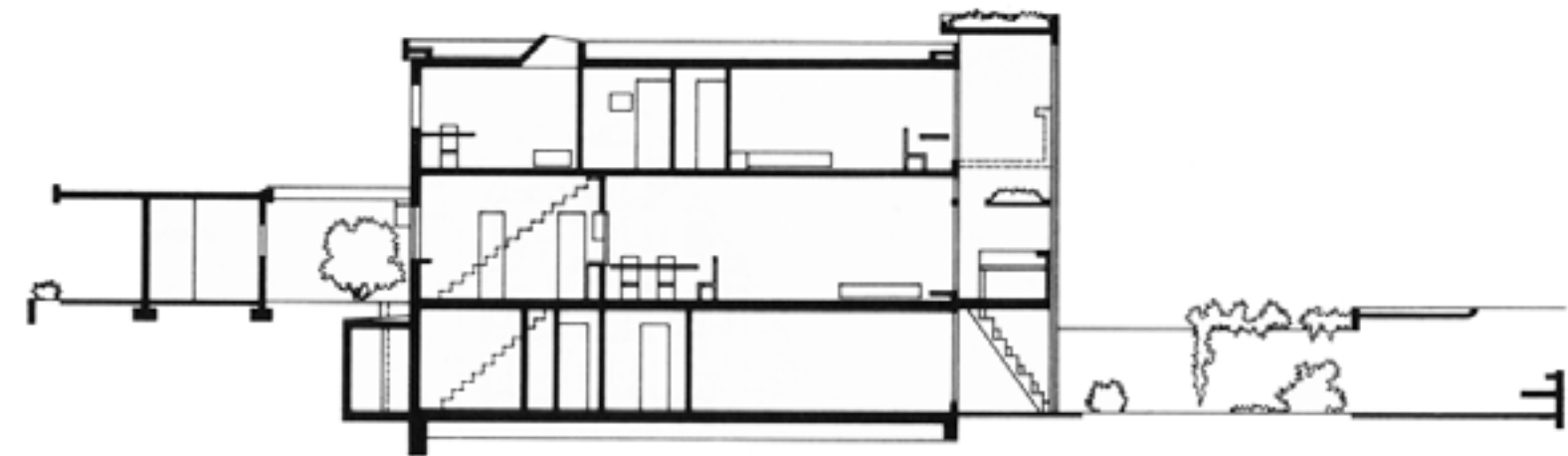
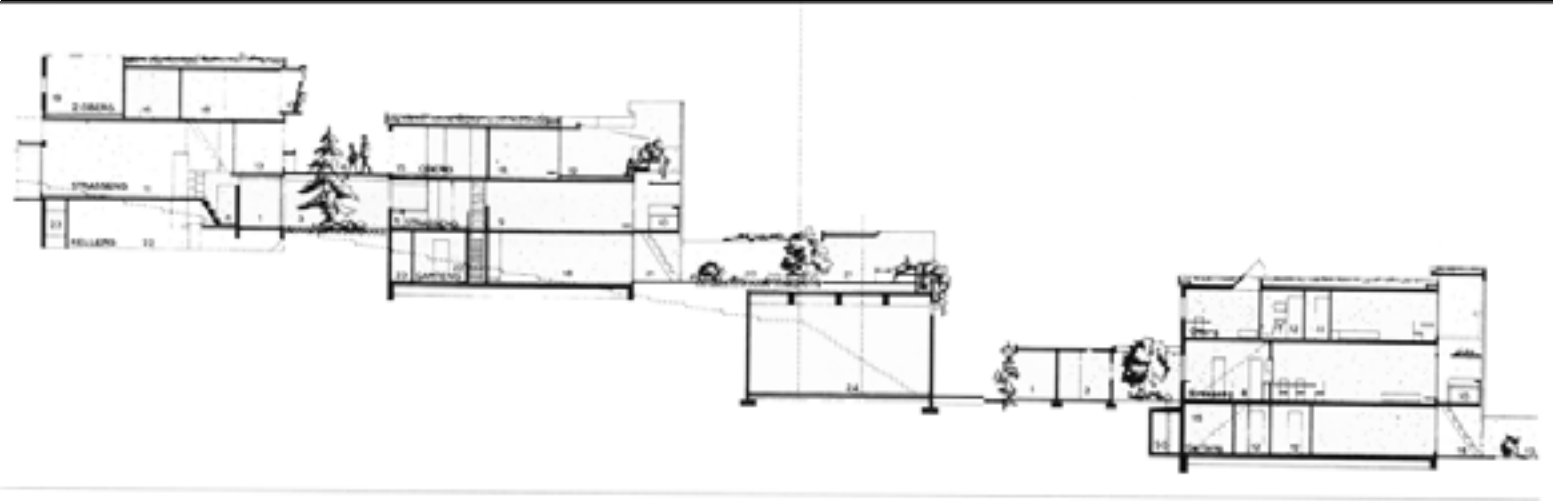


Bruno Taut, Martin Wagner Siedlung, Britz, Berlin, Germany, 1928

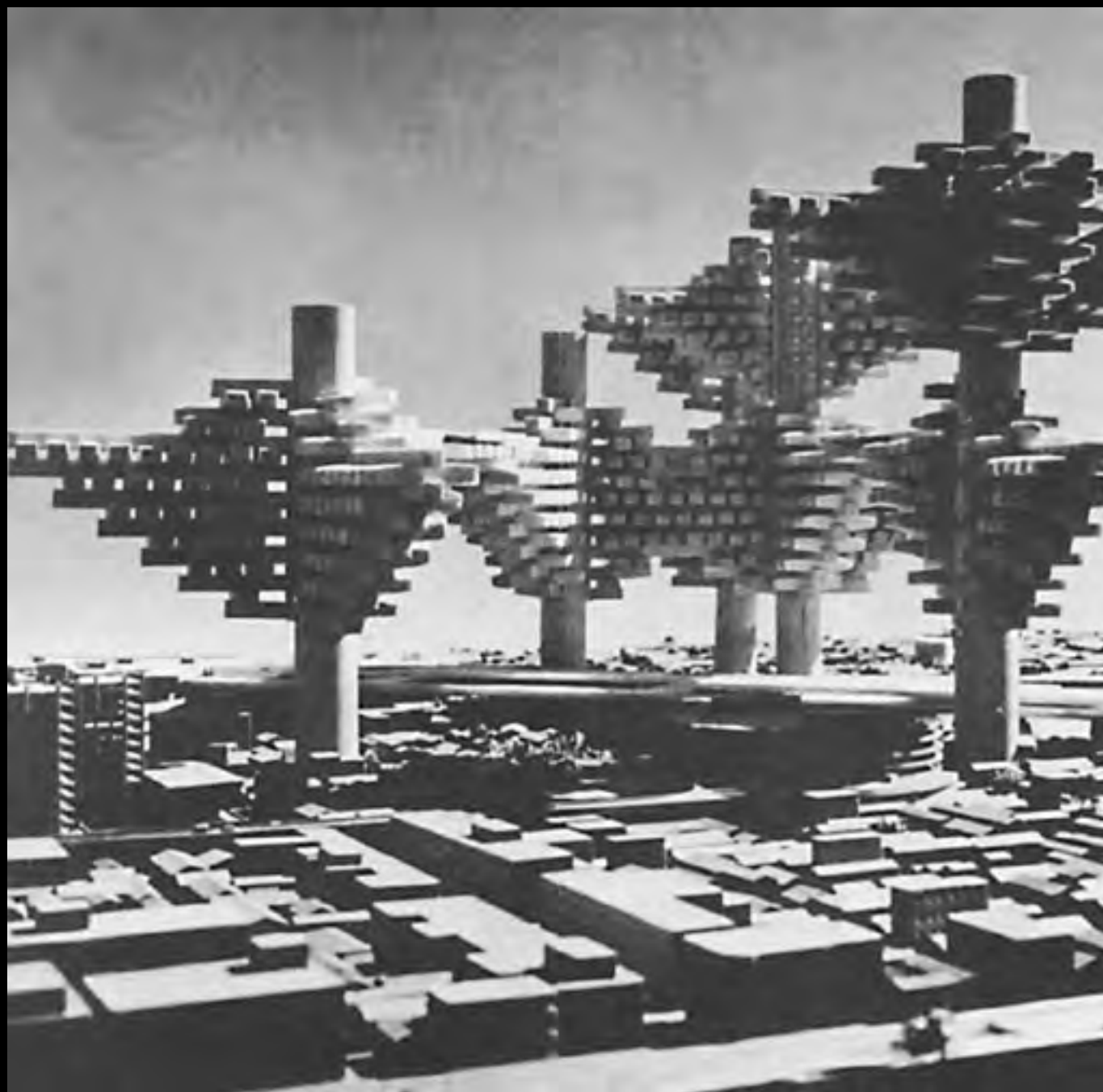




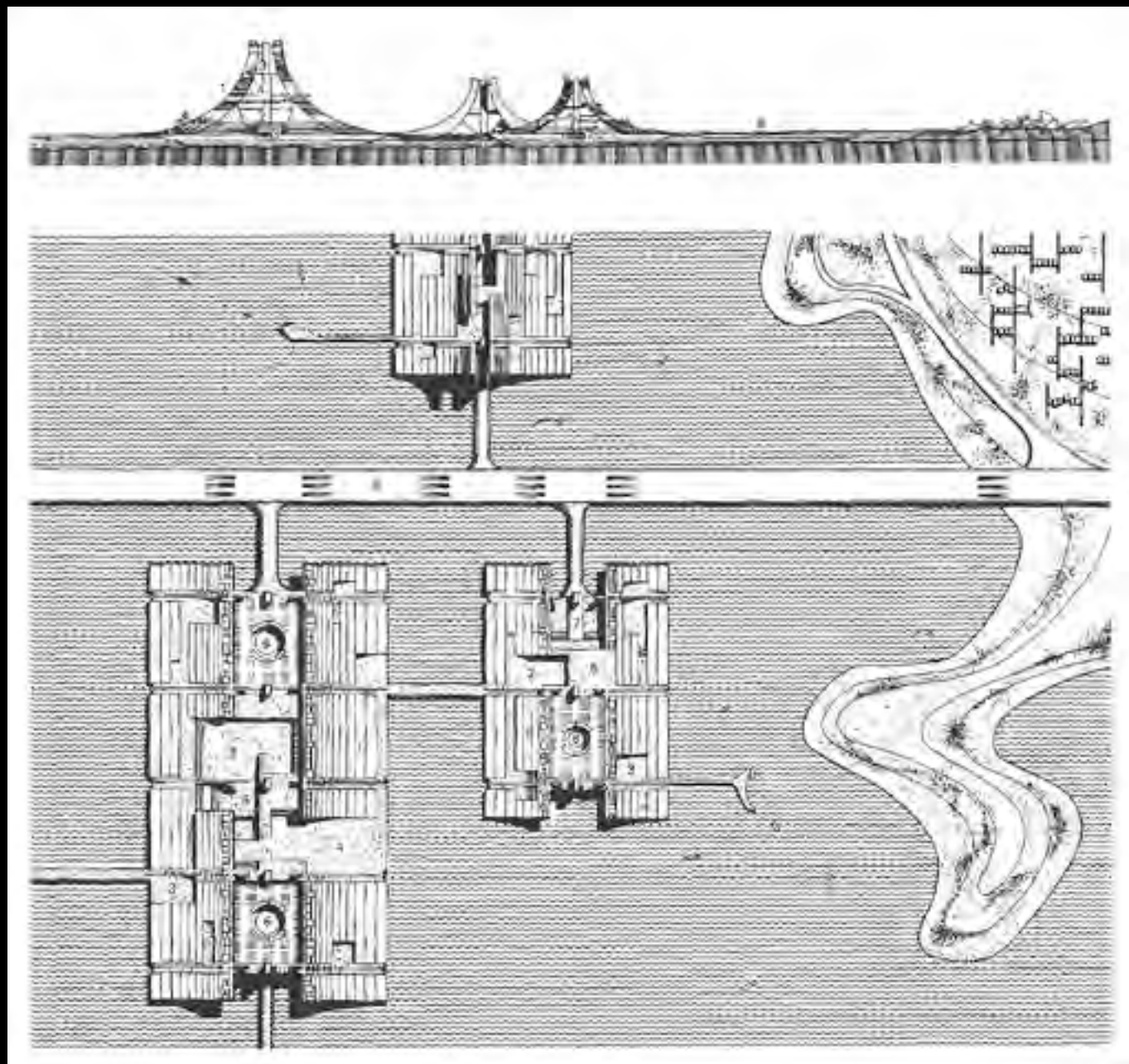




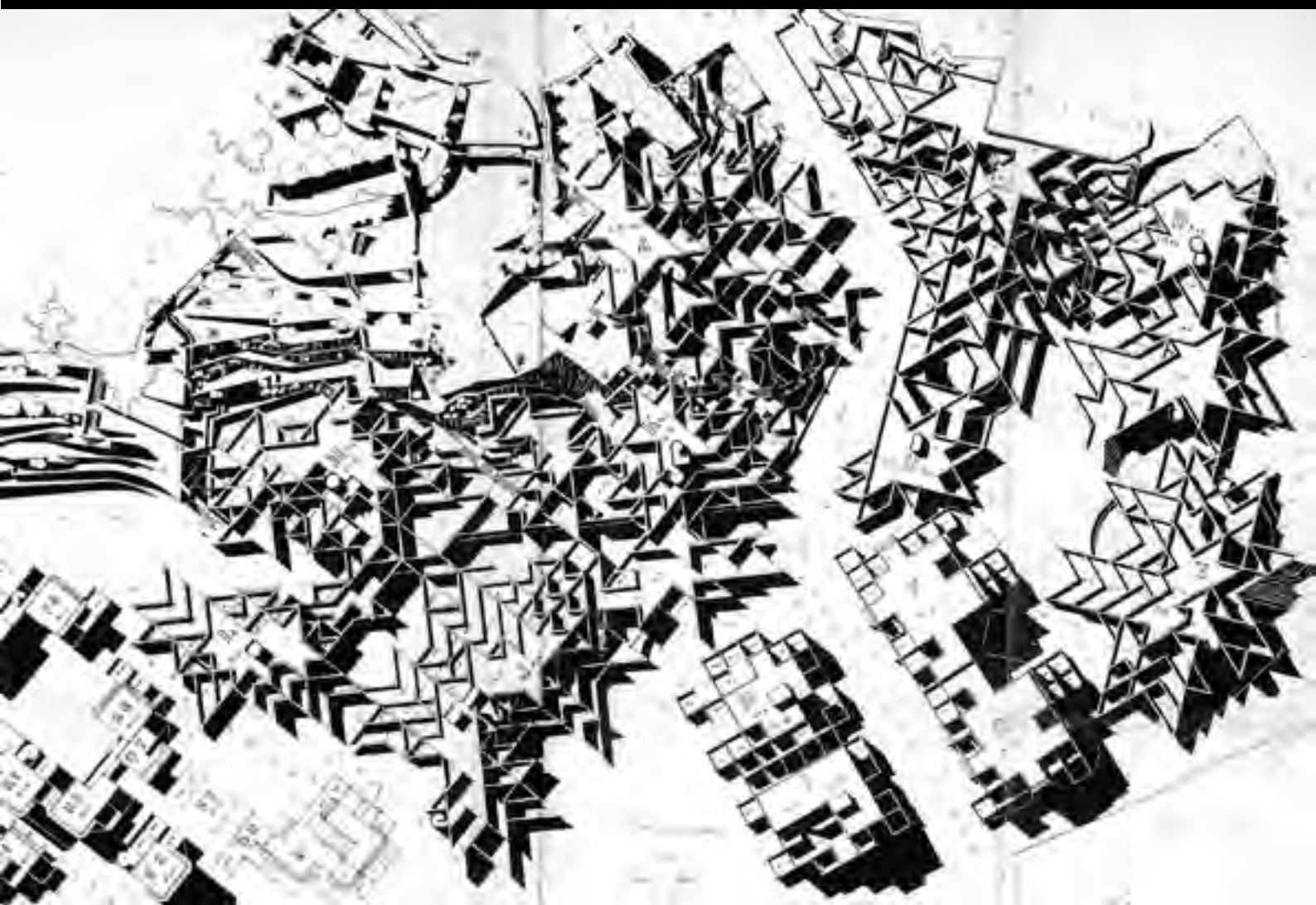
MEGASTRUCTURS







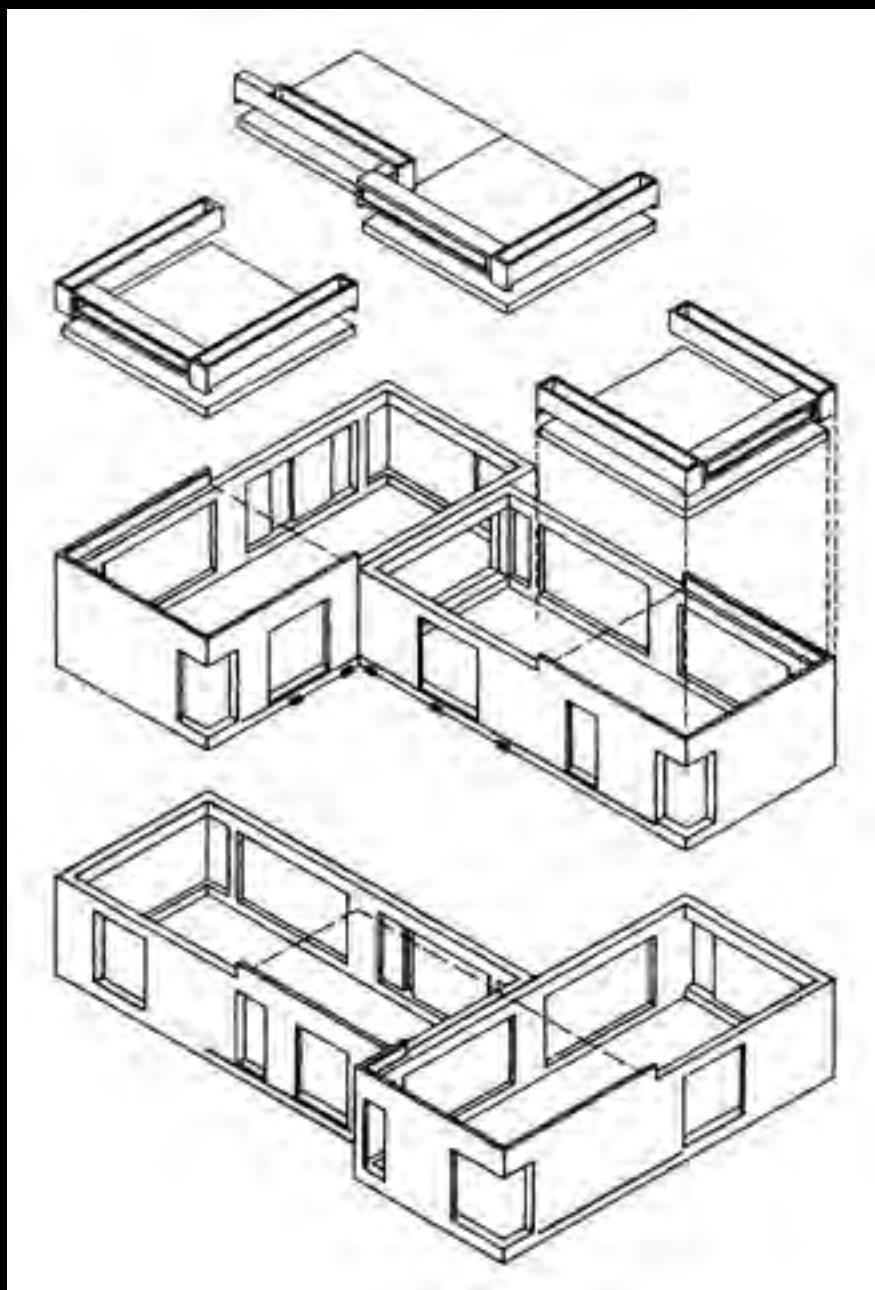


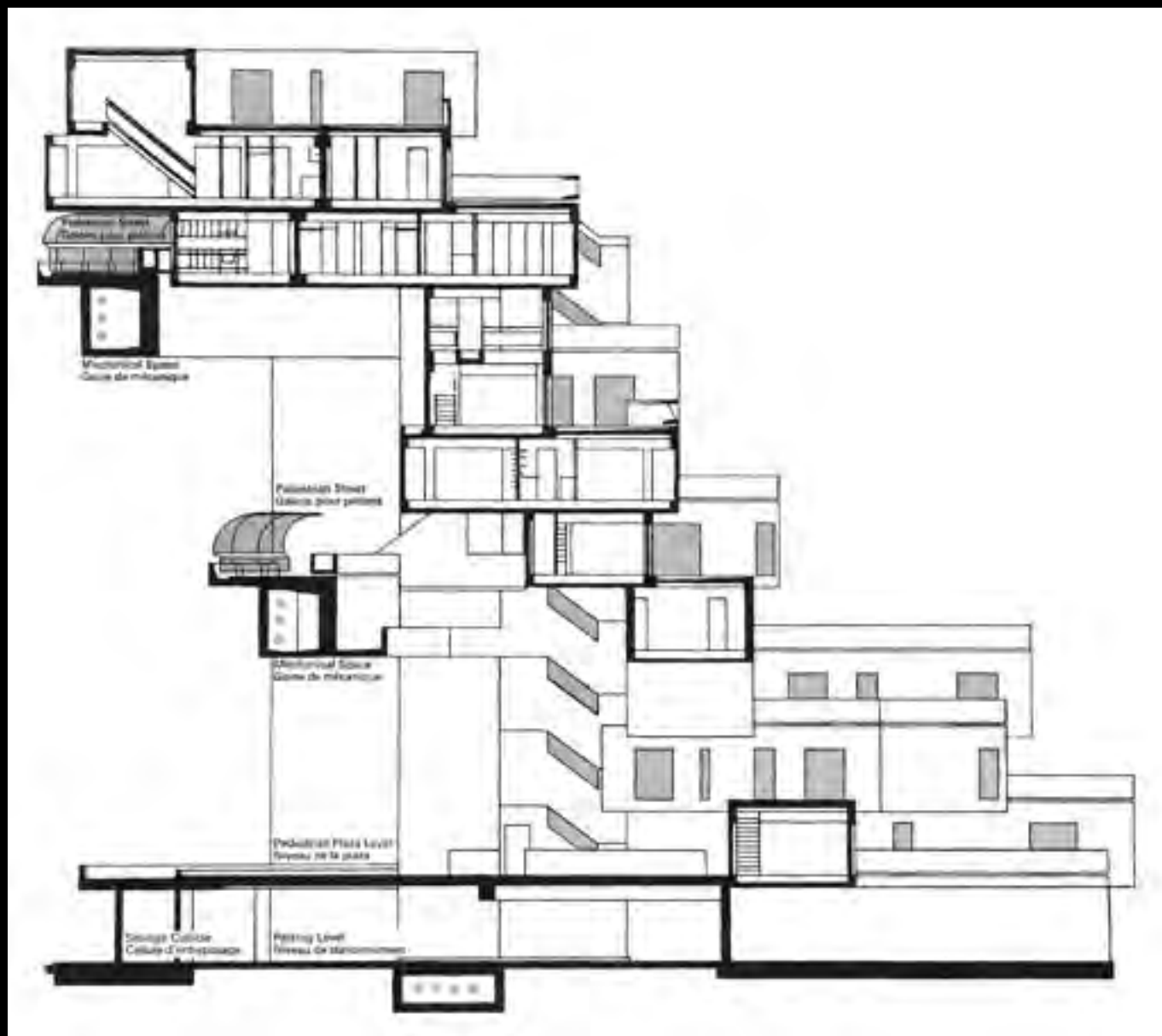












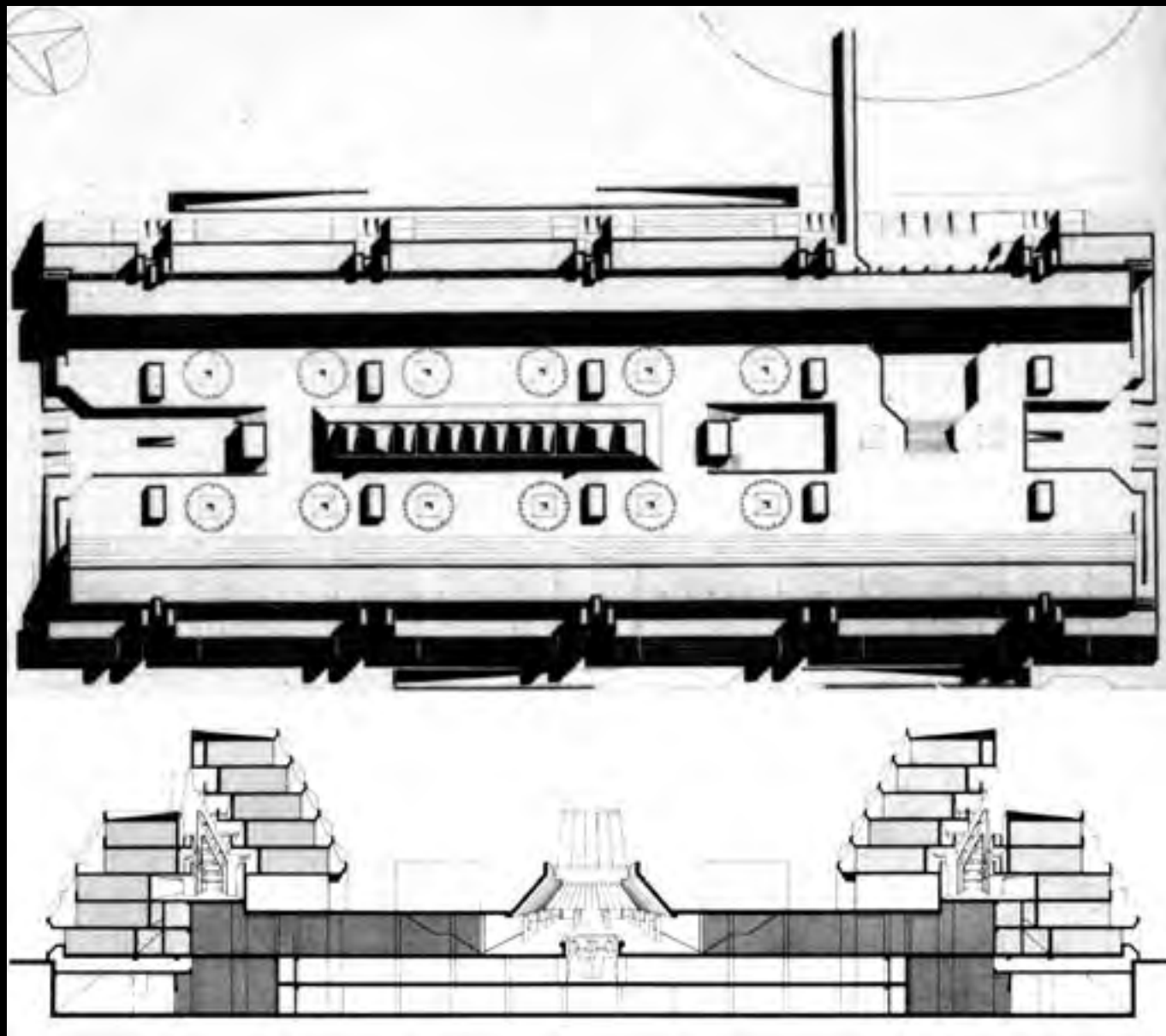


Mosche Safdie, Habitat '67, Montreal, Canada, 1967 • View



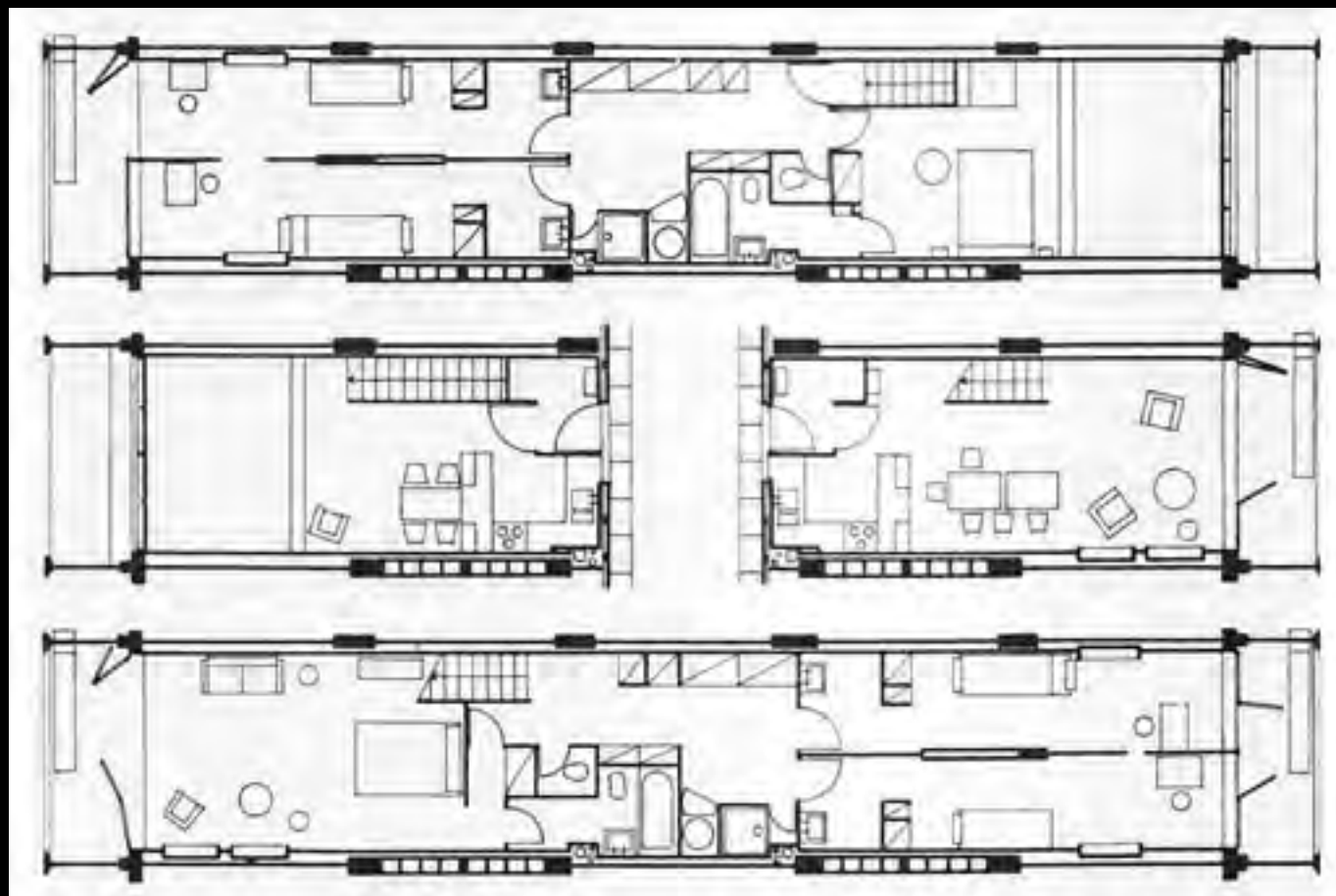






MEGABLOCK

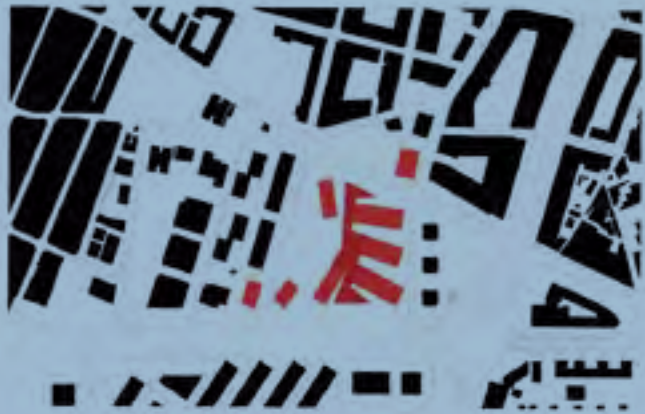


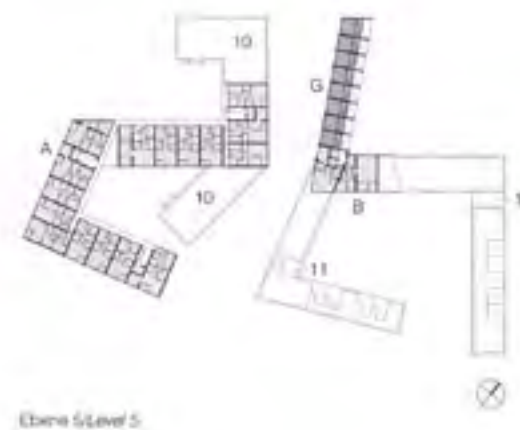
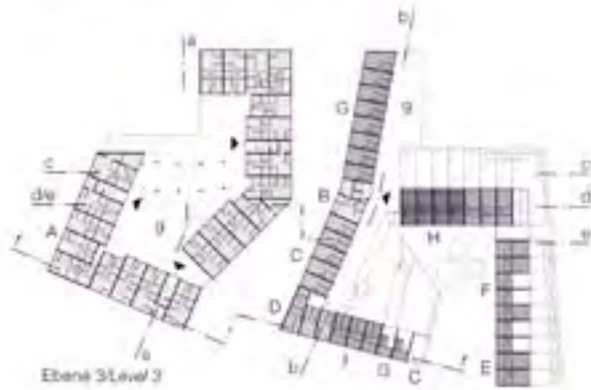


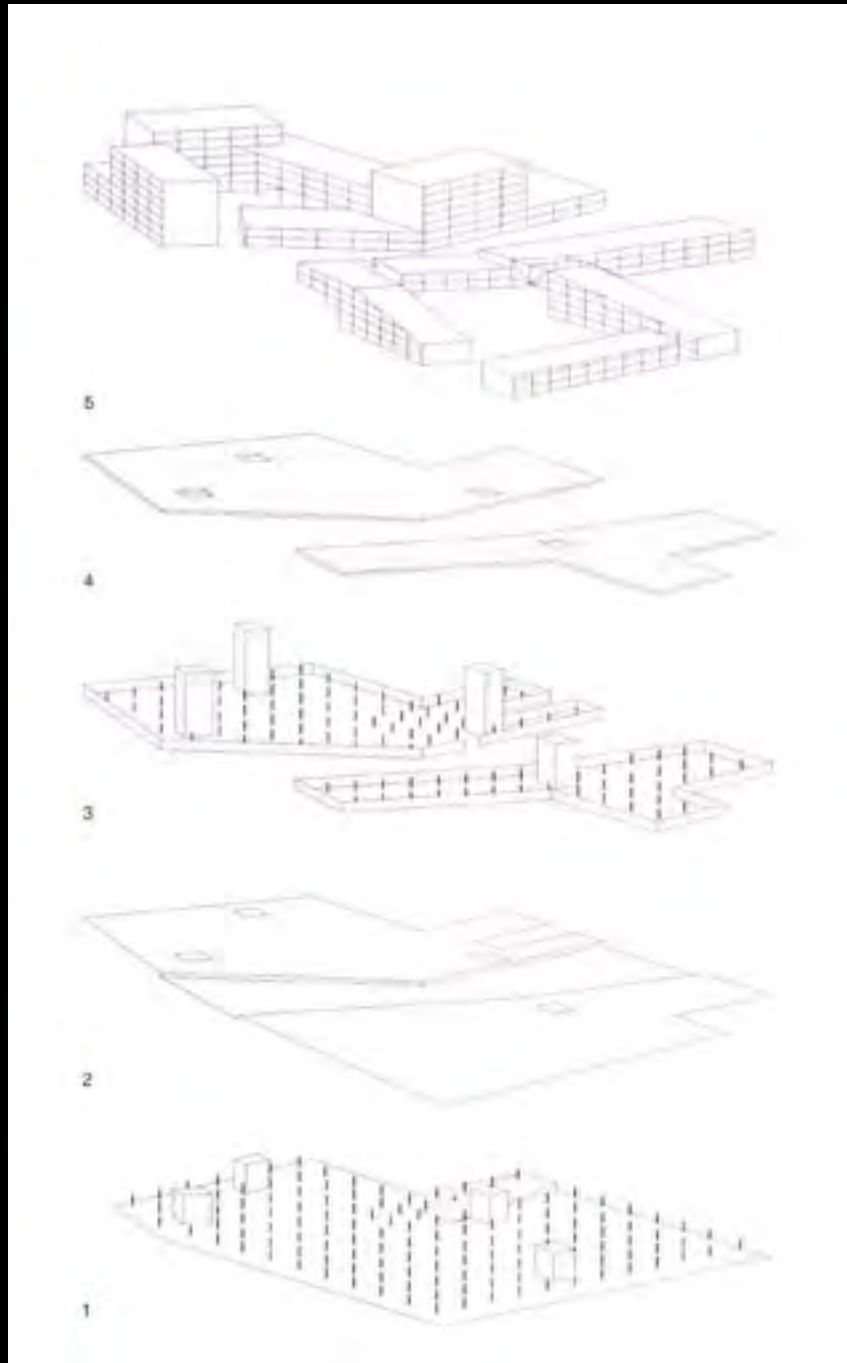


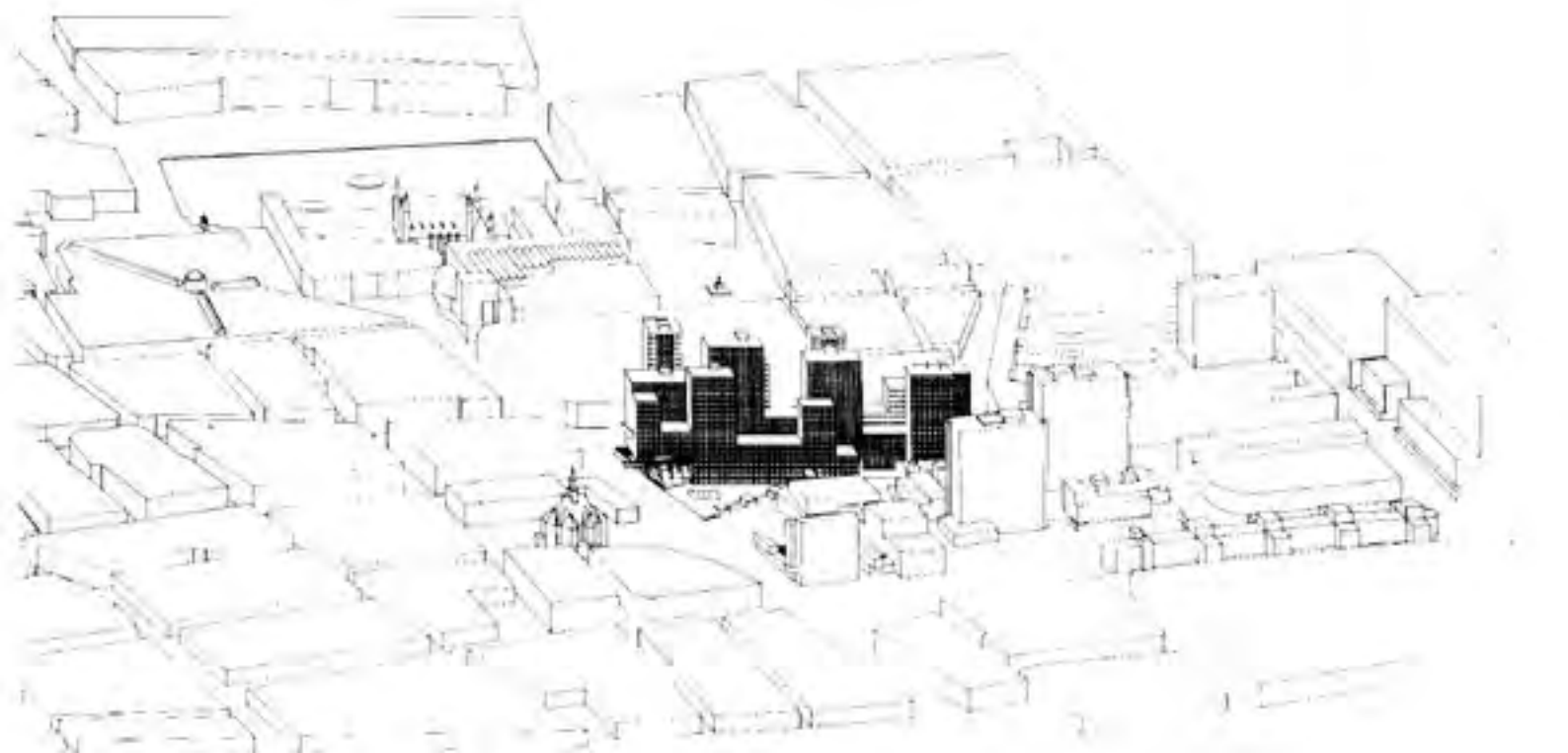




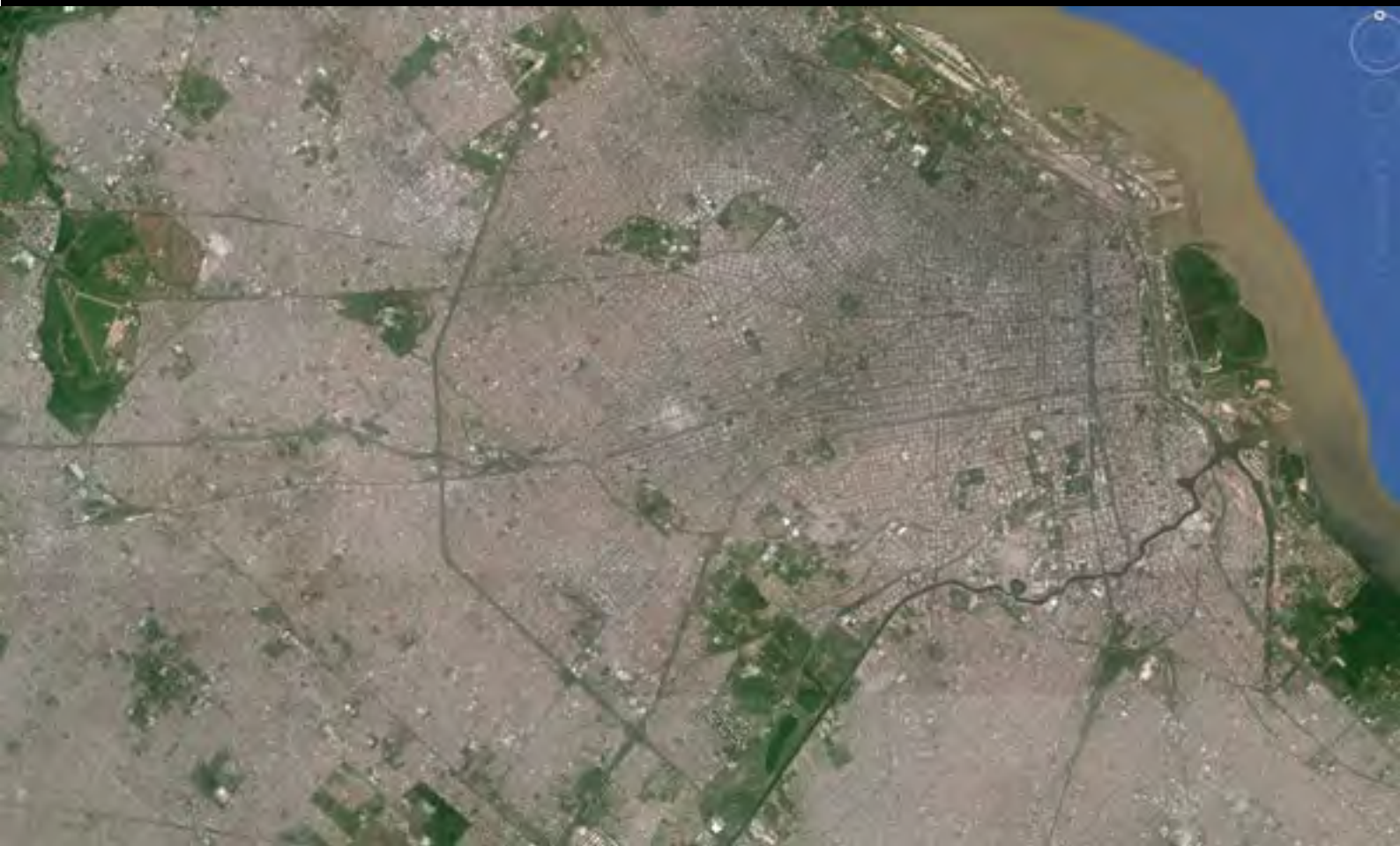






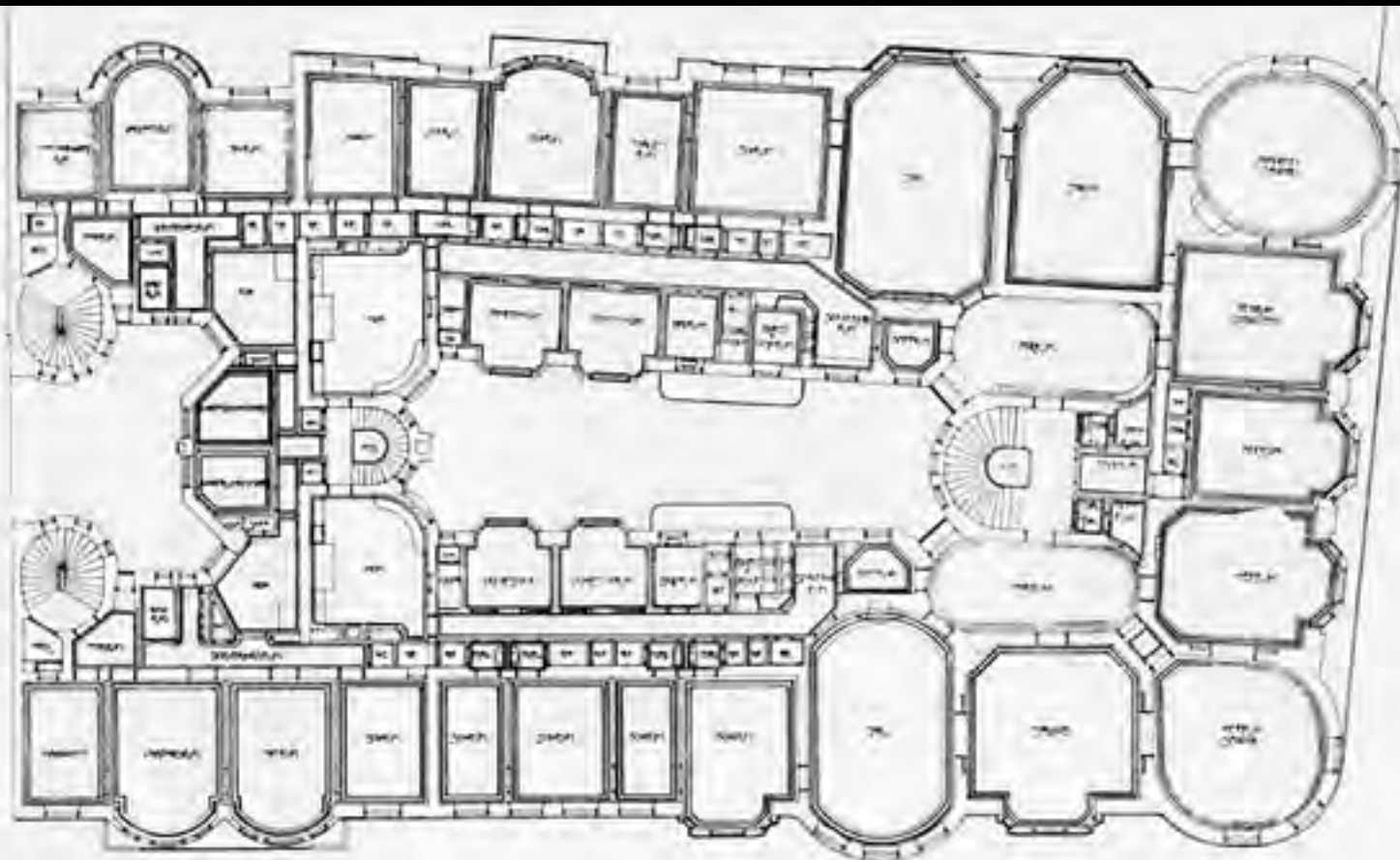


CITY - BLOCK



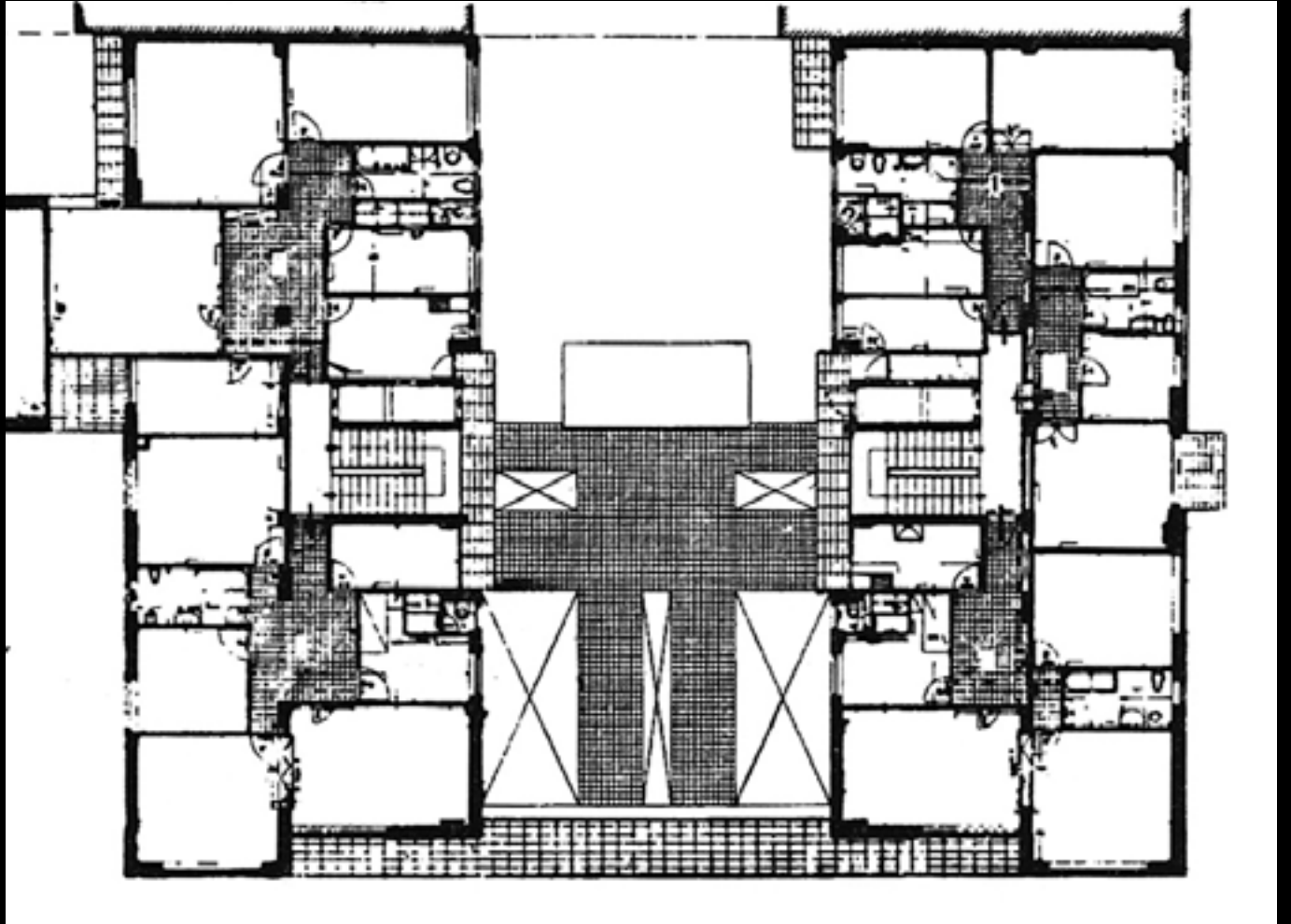






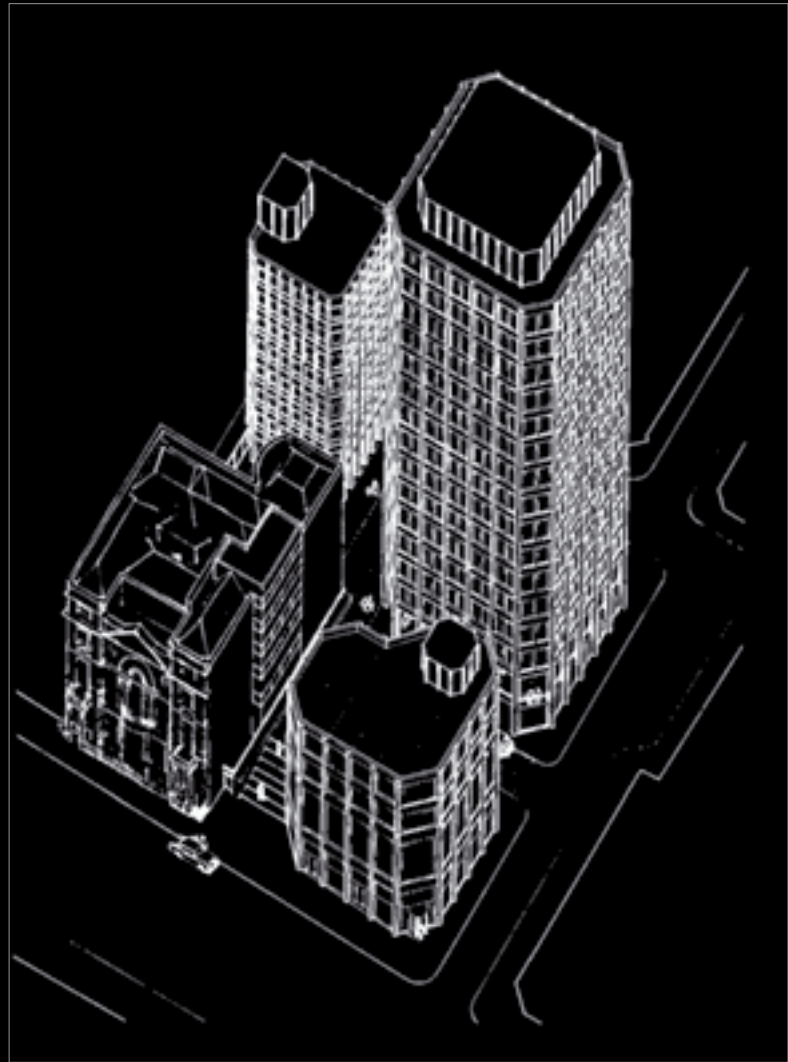








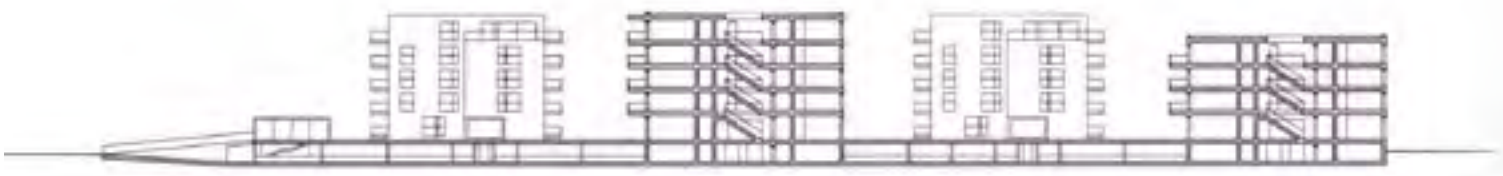
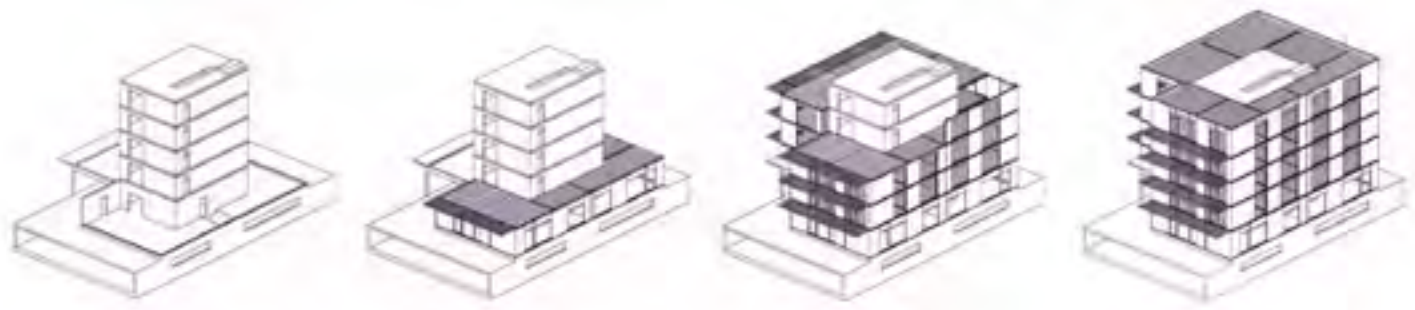
COMPOSITIONS





'LINKED BLOCK'





CLUSTERBLOCKS





POINT BLOCKS





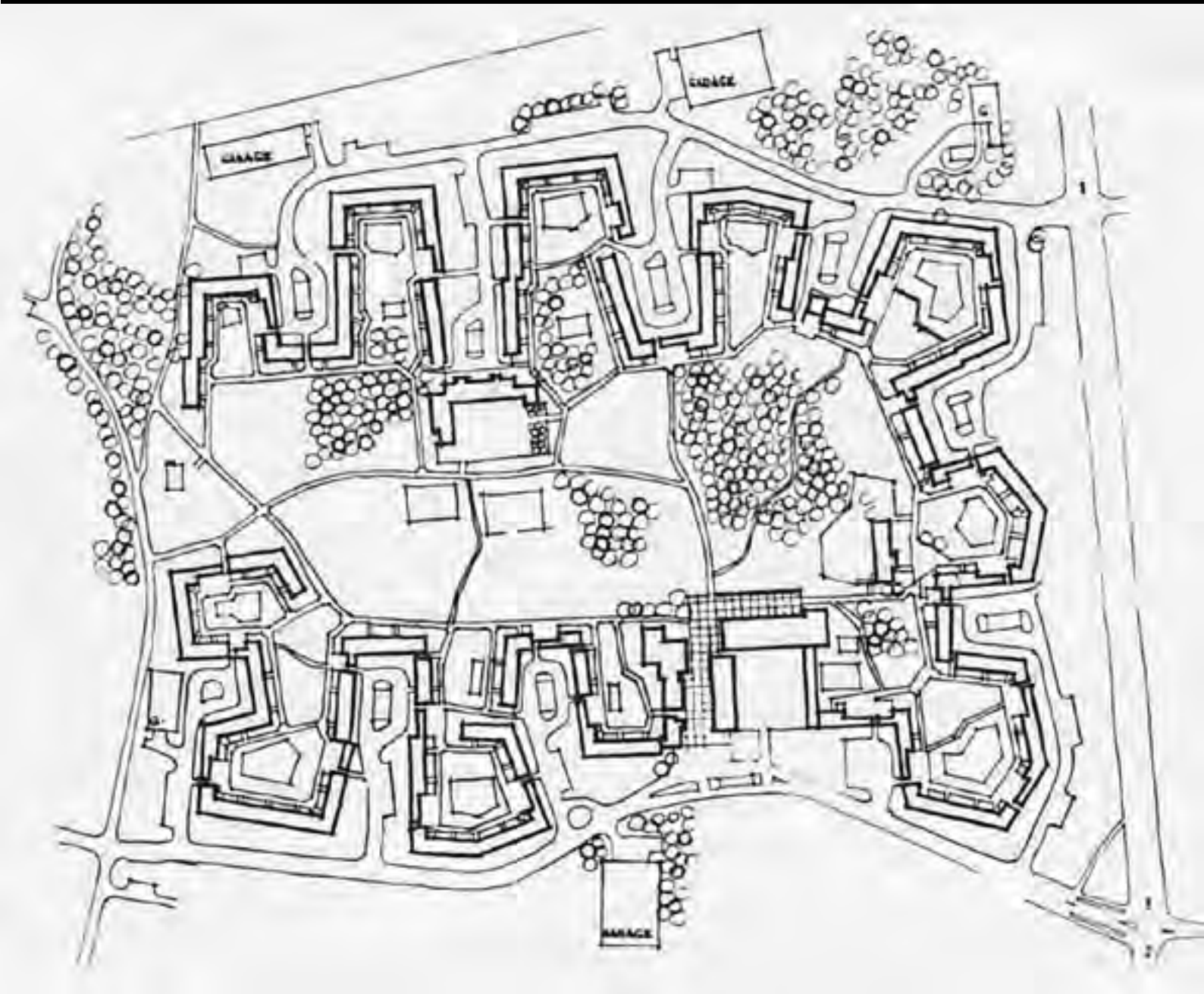




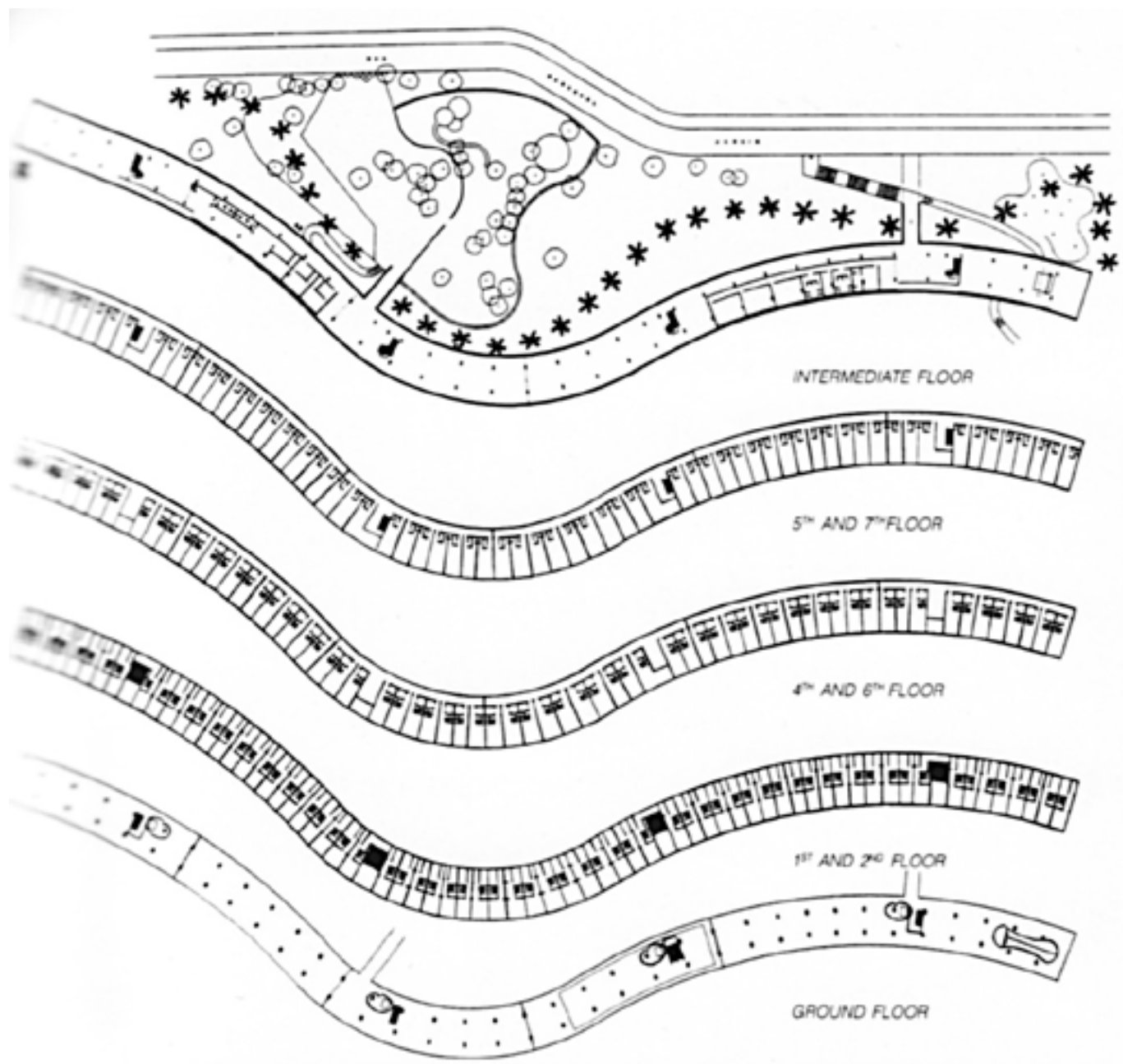
LINEAR HOUSING

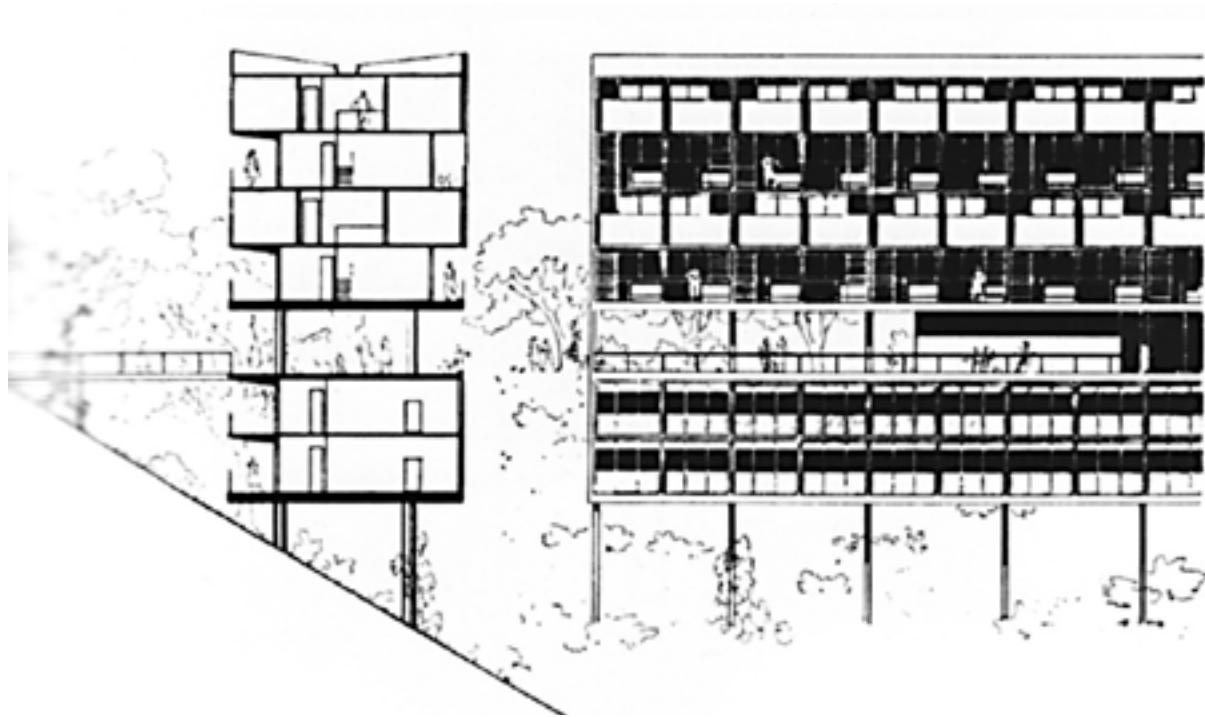


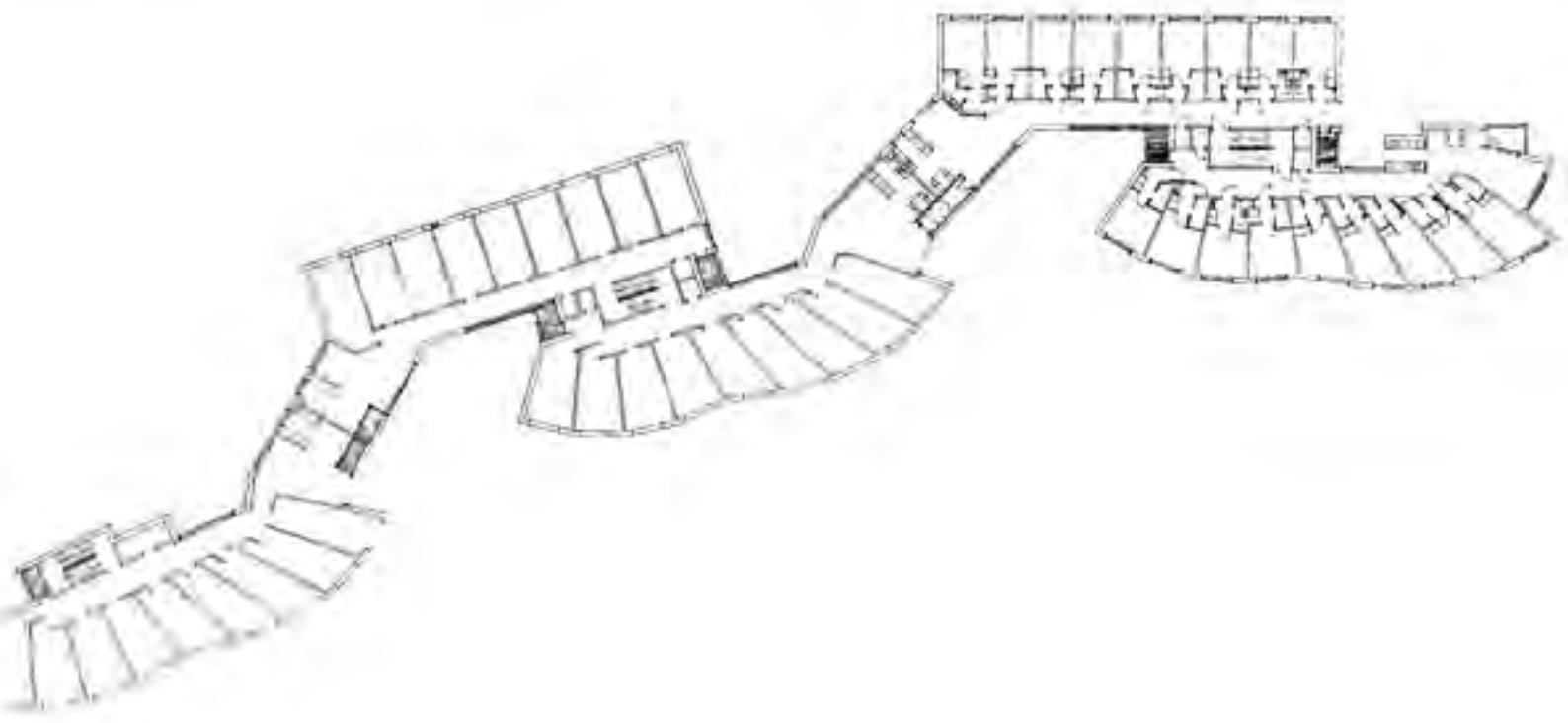
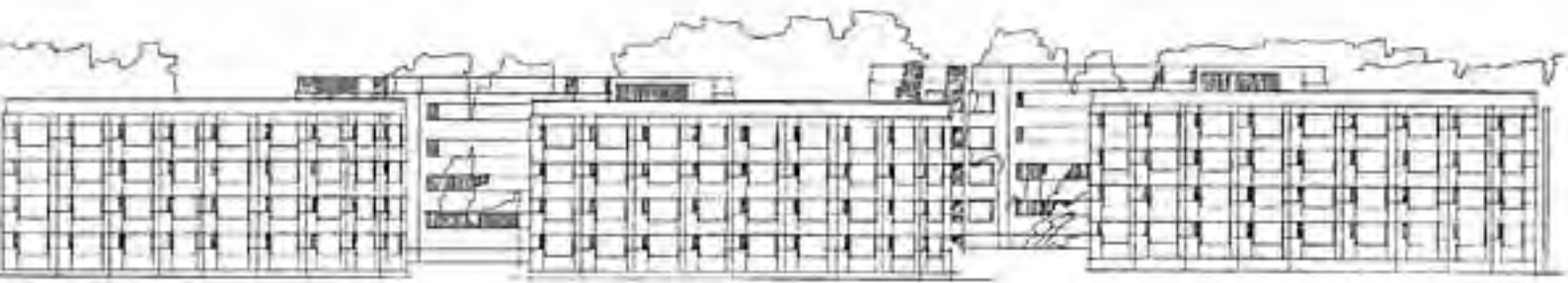
















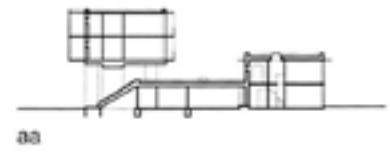
2. Obergeschoss / Second floor



Niveau halböffentlicher Anger / Level of semi-public "common"



Straßenebene / Street level



aa

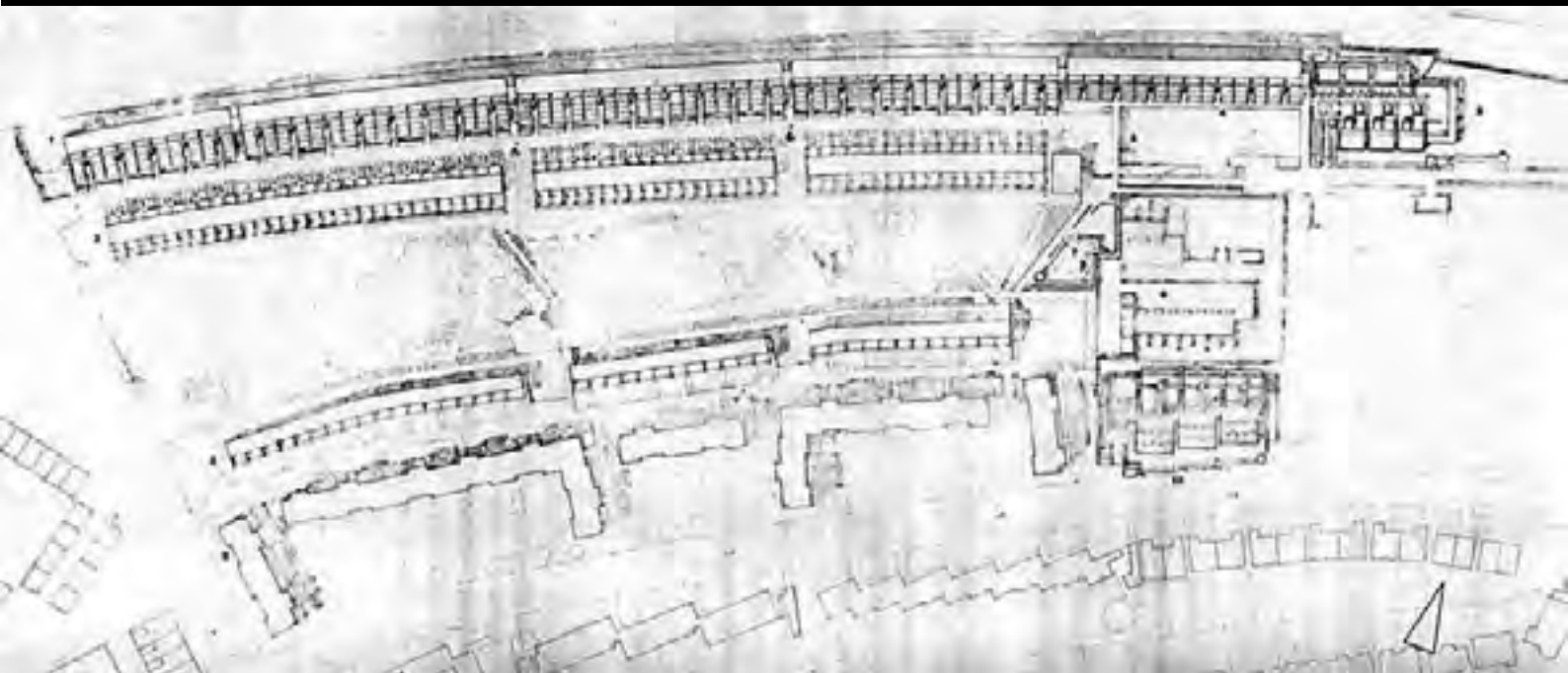
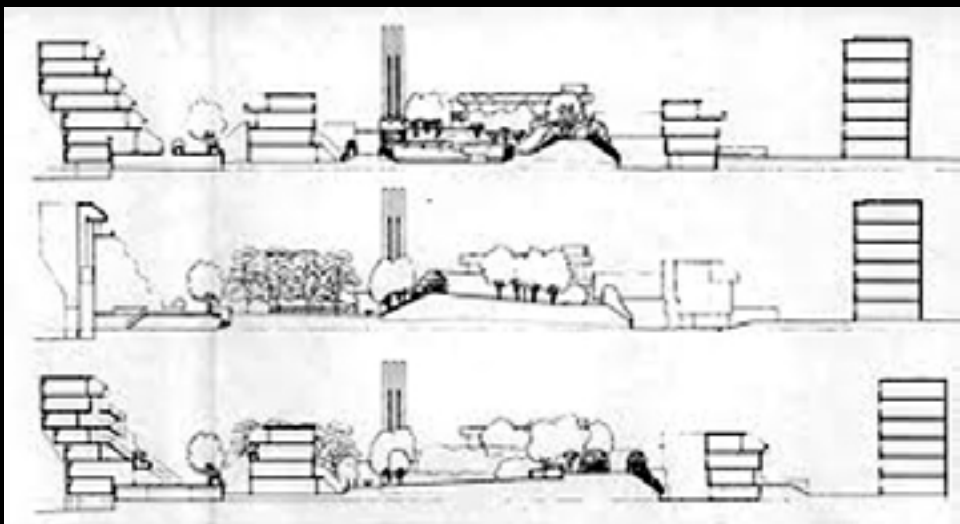


bb







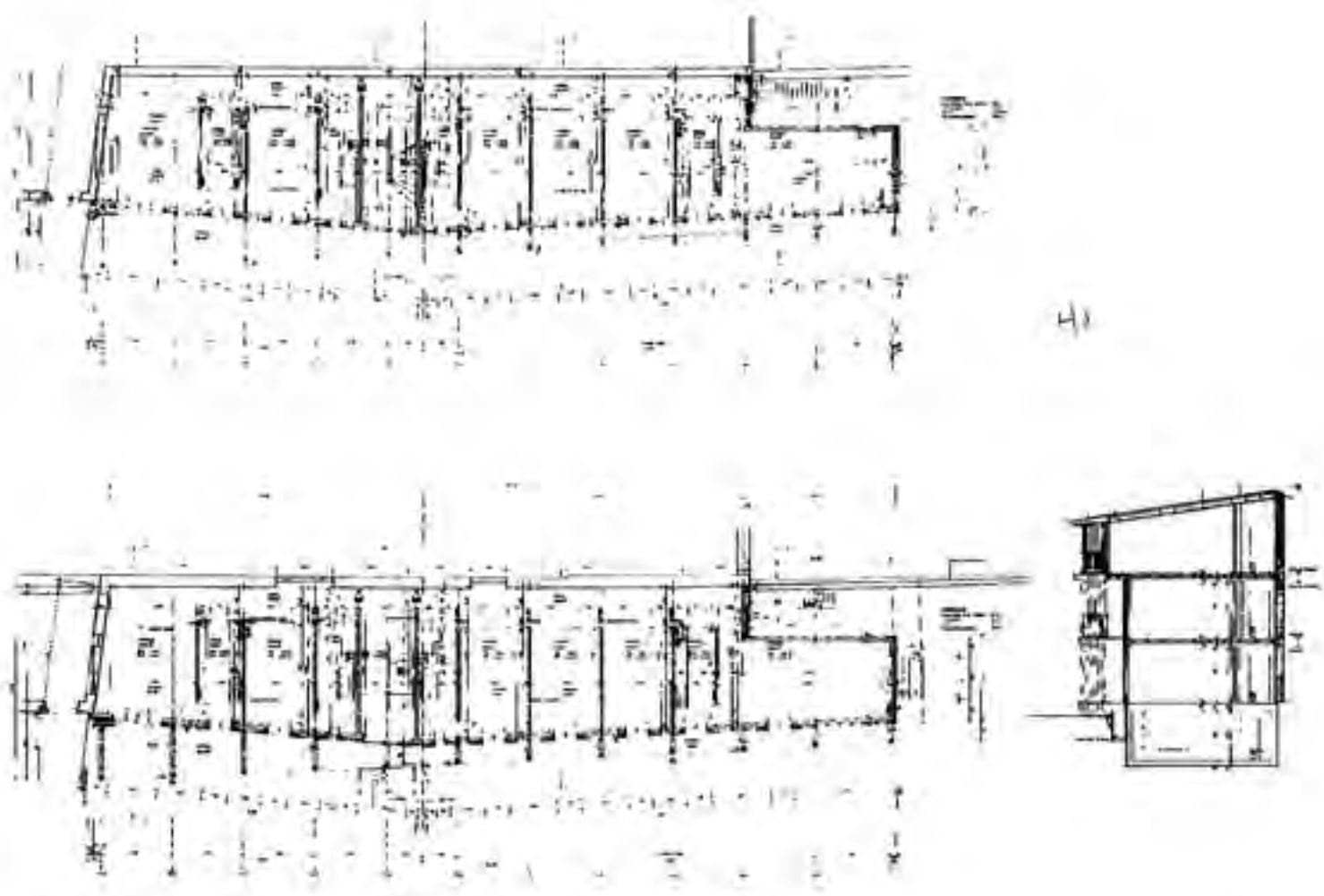




SMALHUS
'NARROW BLOCK'

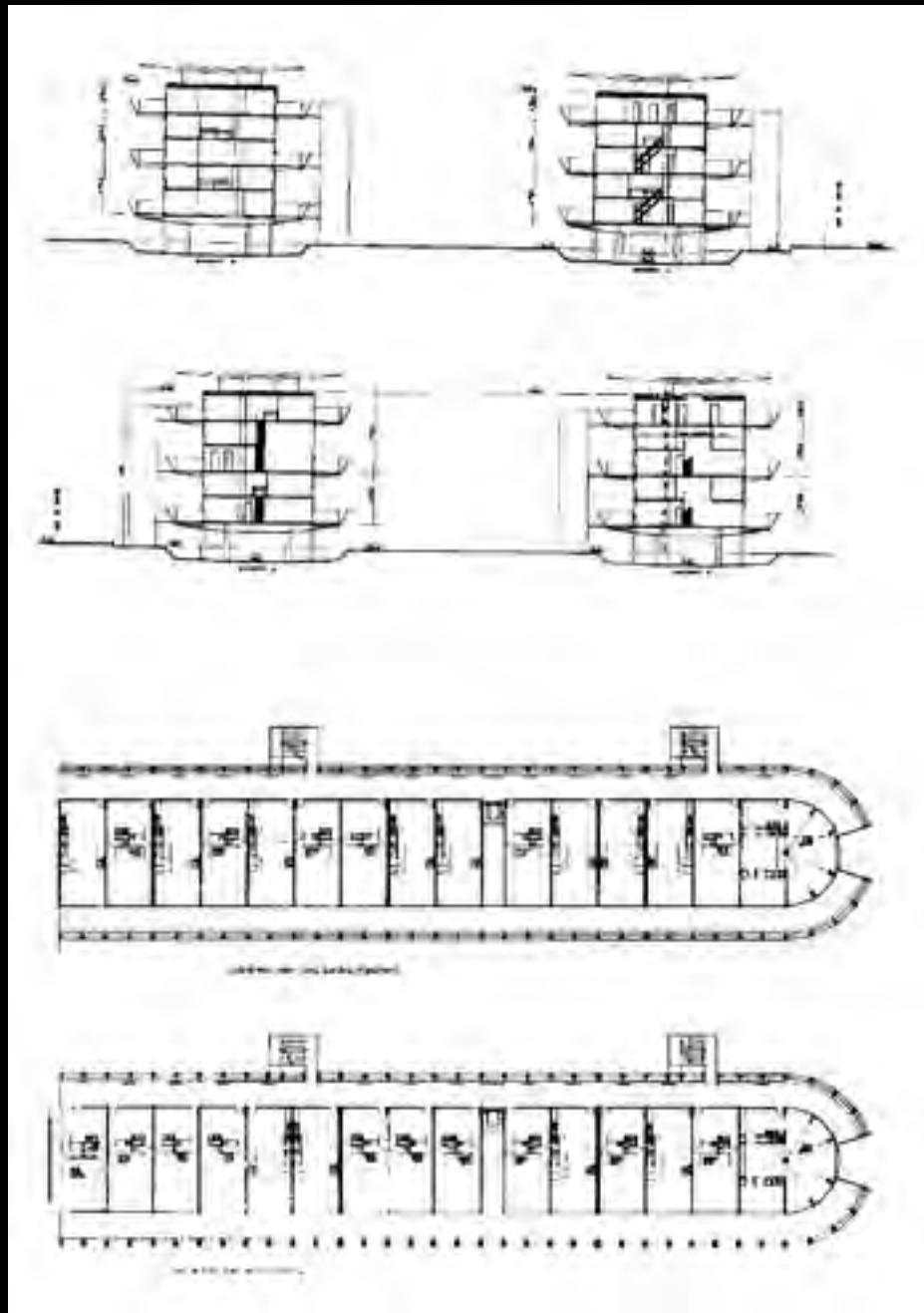






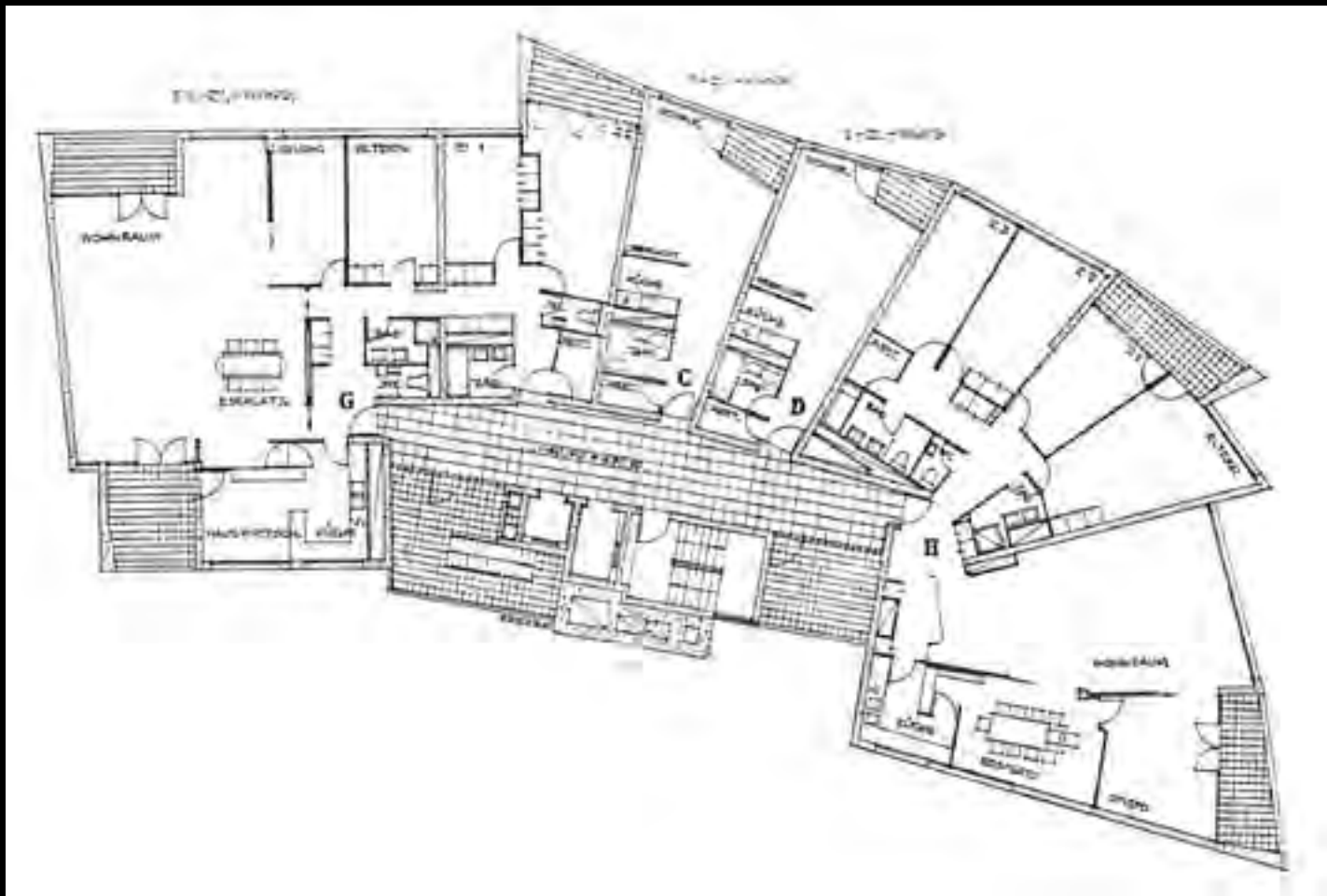
EXPERIMENTS





TOWERS





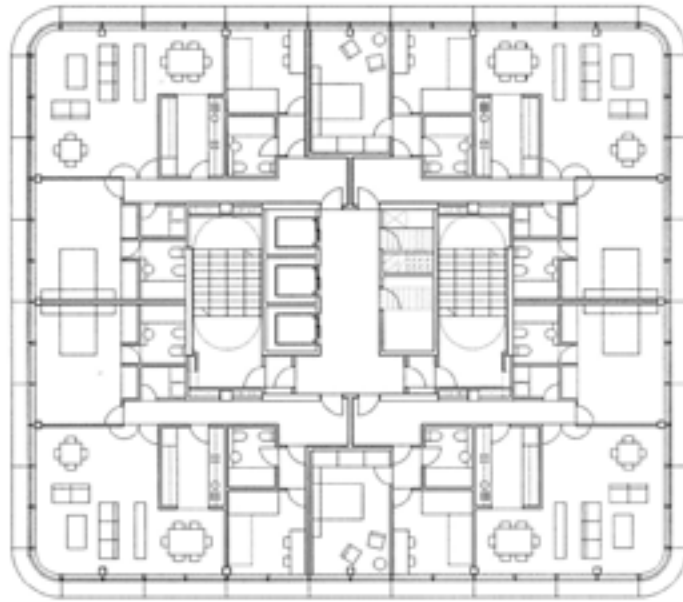


Saenz de Oiza, High rise building, Torres blancas, 1965 - Elevation

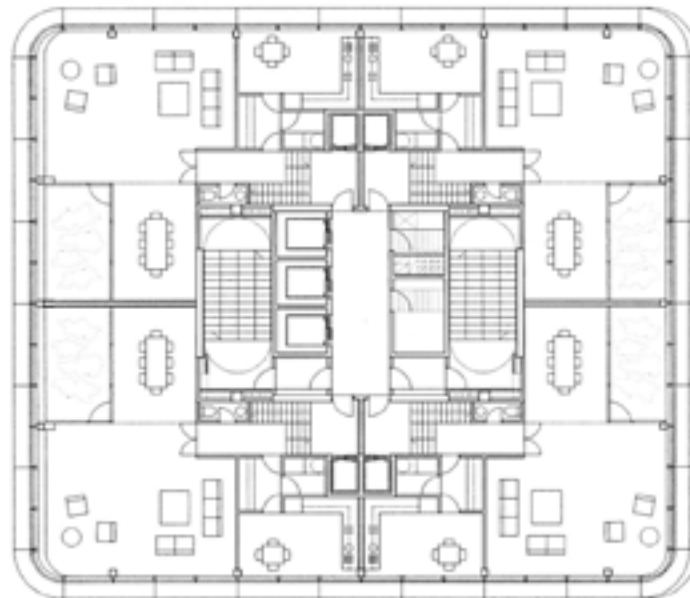






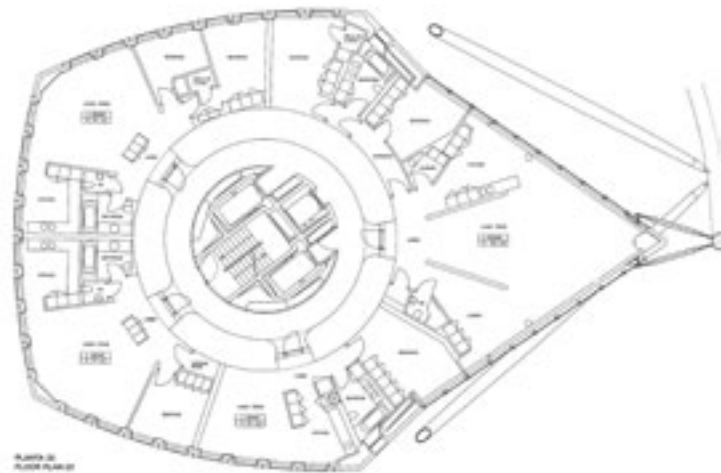
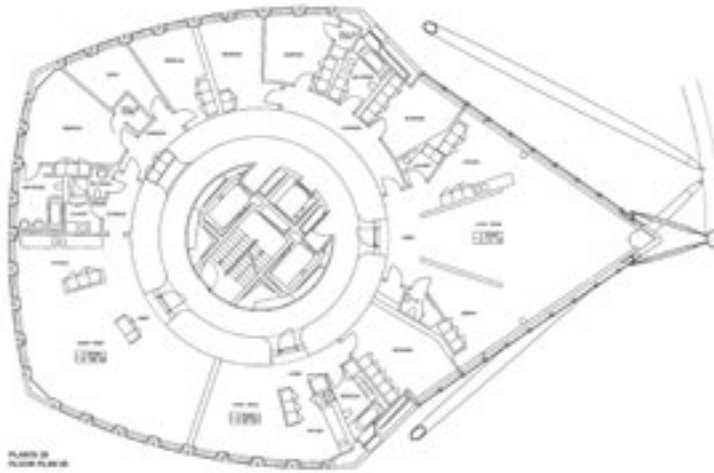


TYPICAL FLOOR PLAN DWELLINGS B



TYPICAL FLOOR PLAN DUPLEX DWELLINGS

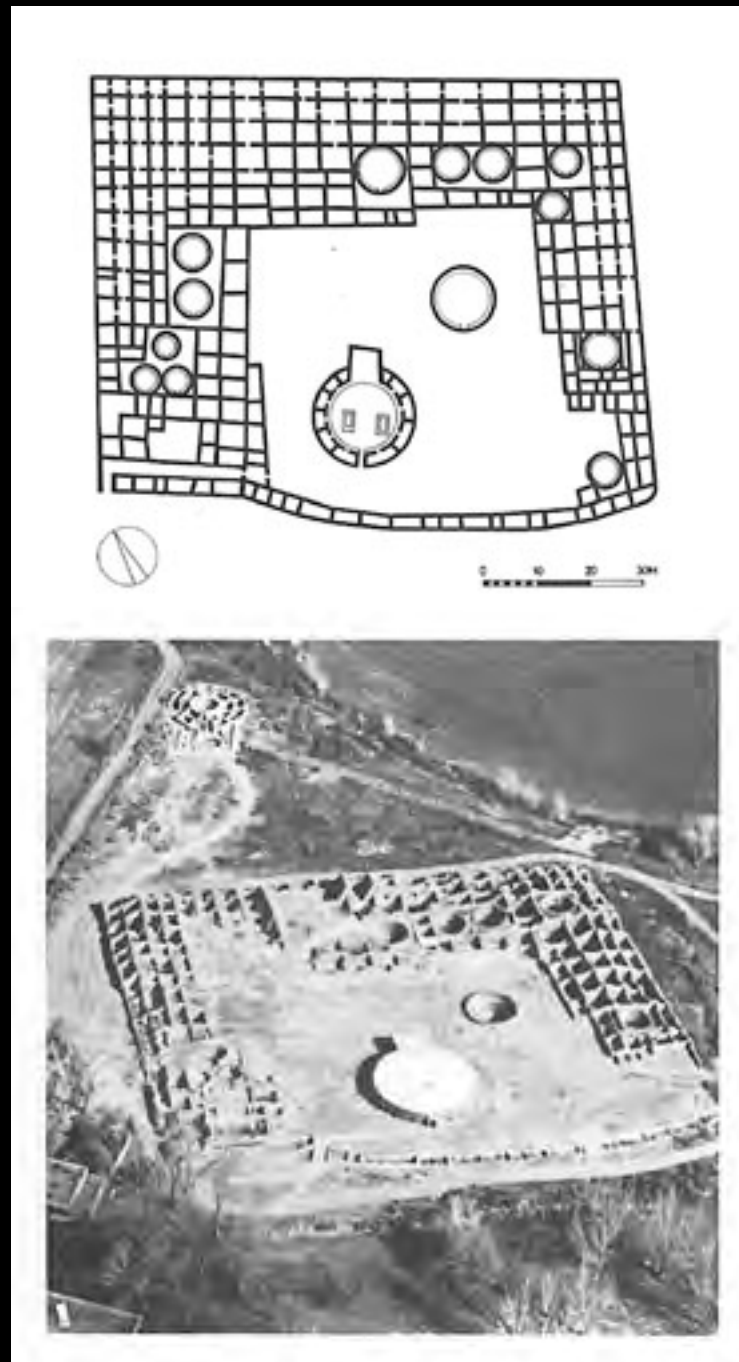


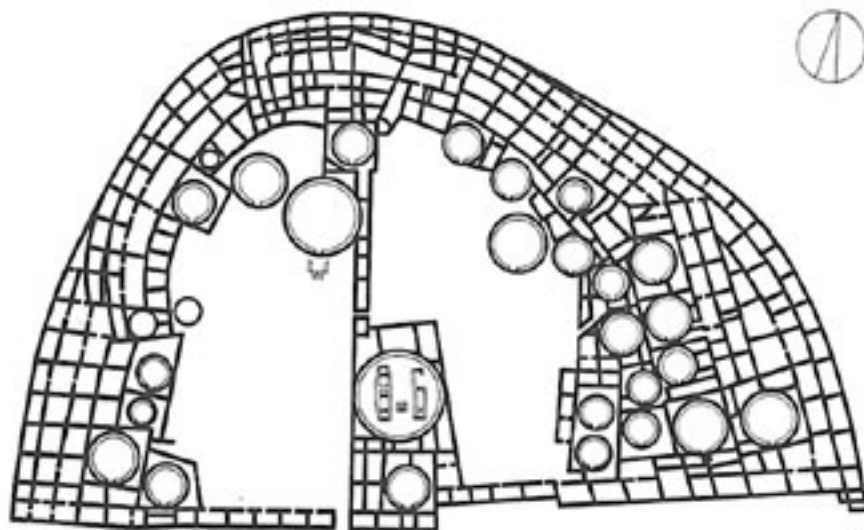


COMPACT HOUSING, HIGH DENSITY







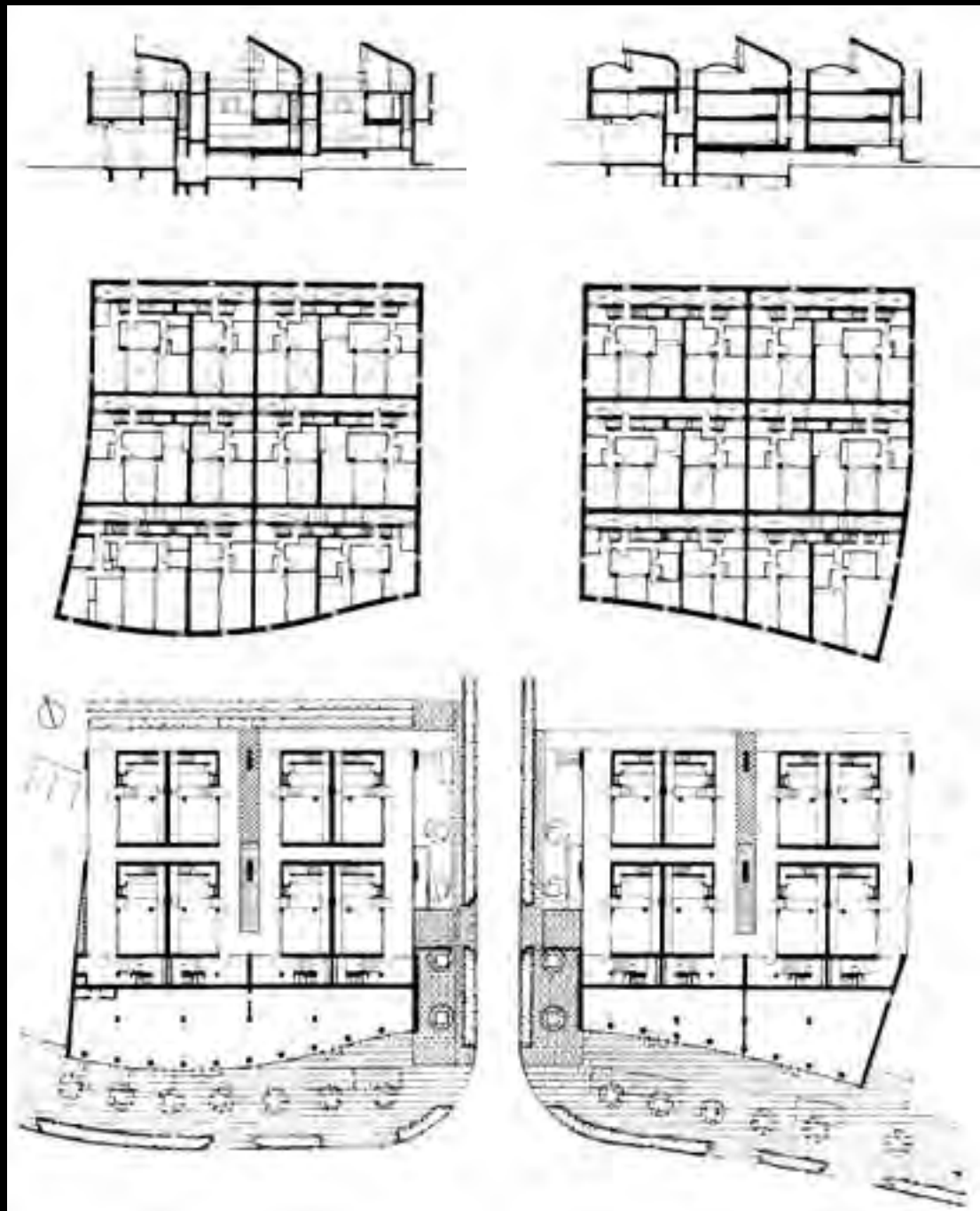






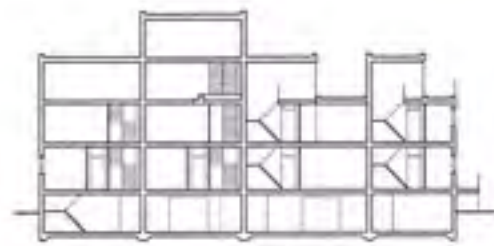


Nexus World Fukooka, NL, 1991 - View over roofscape

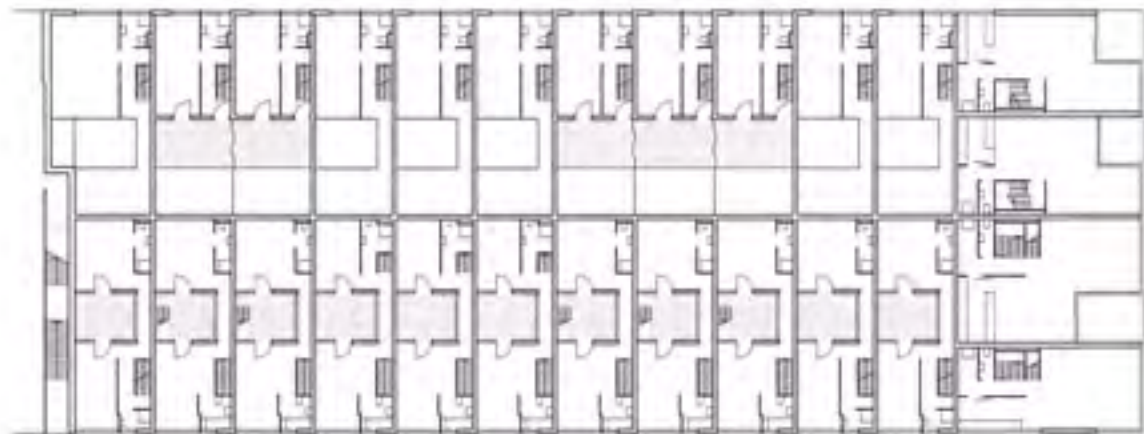




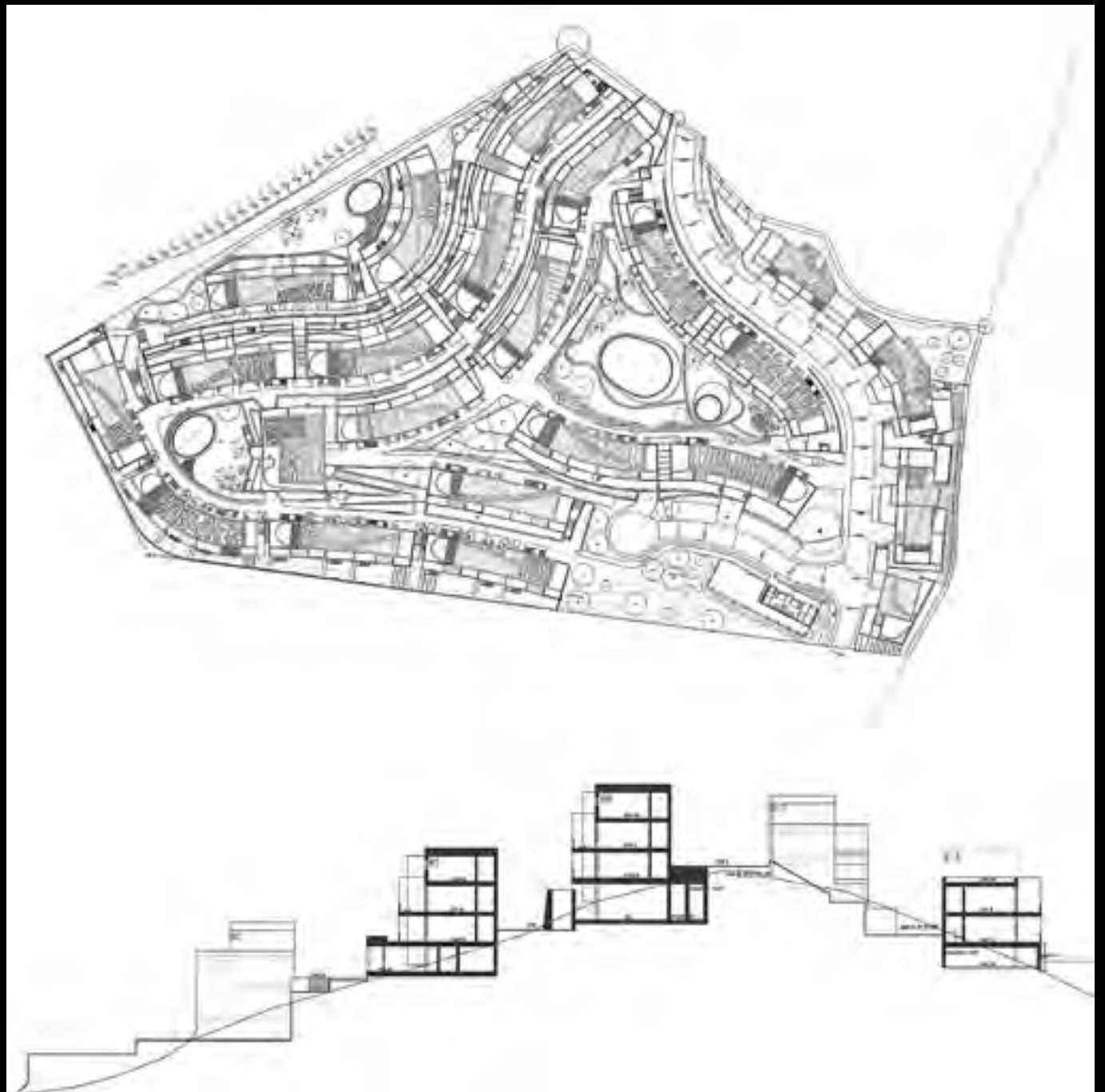
dd



ee







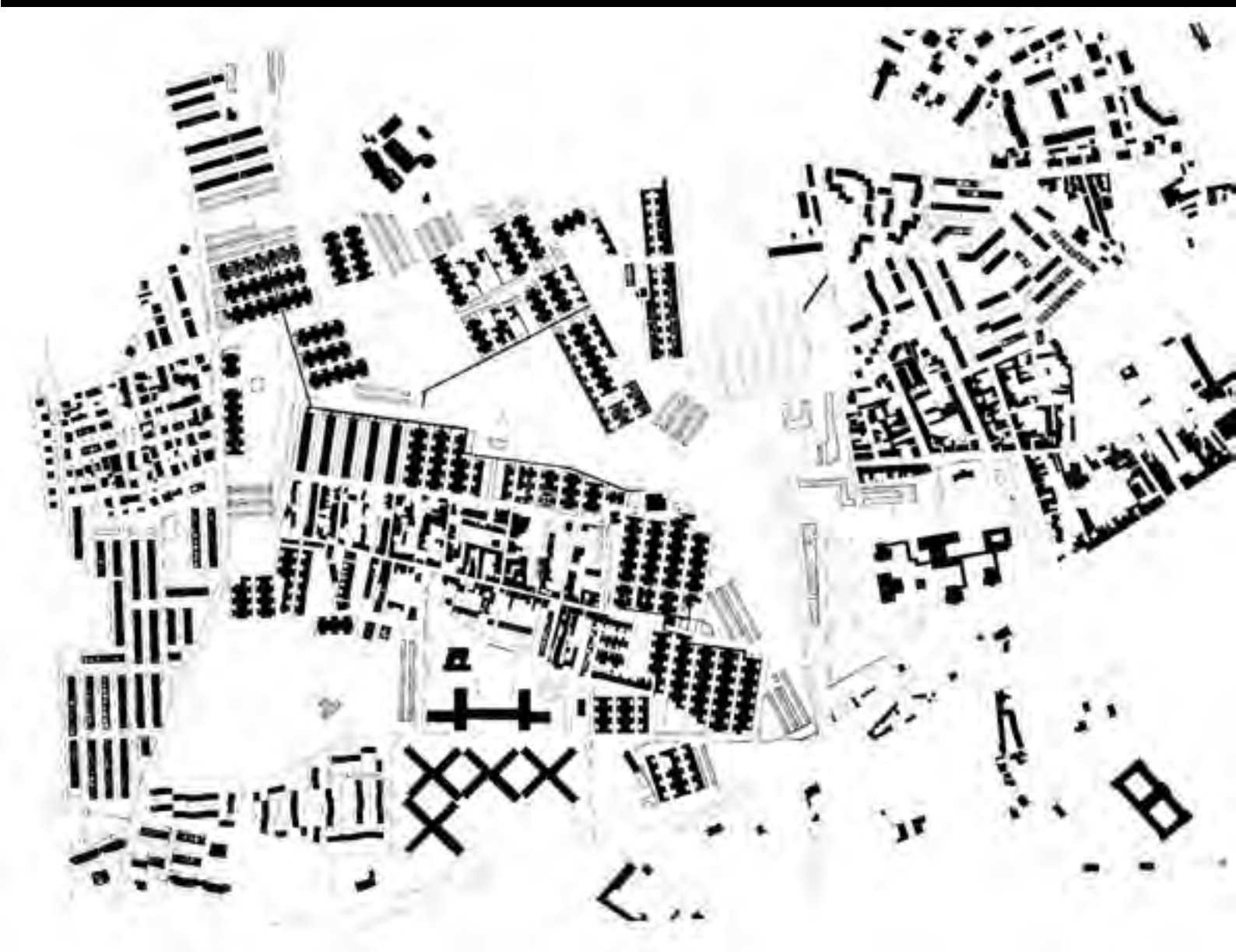
TERRACED HOUSING



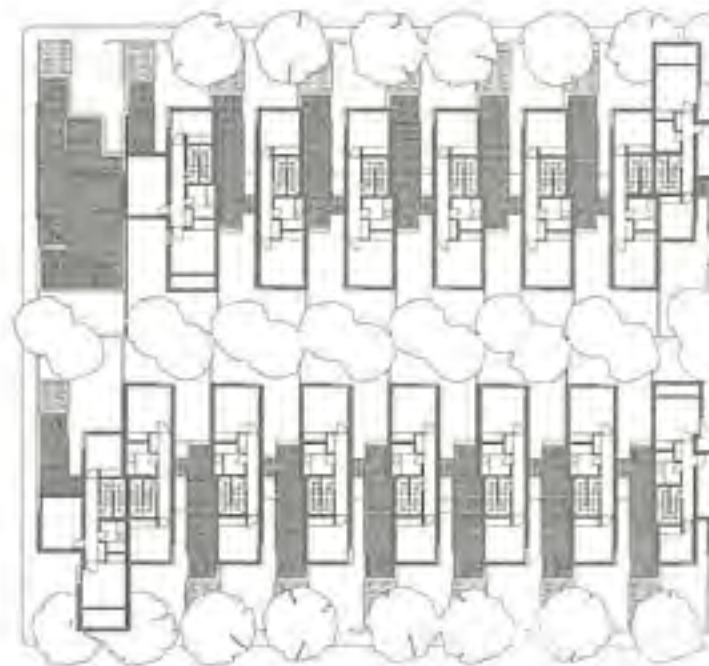
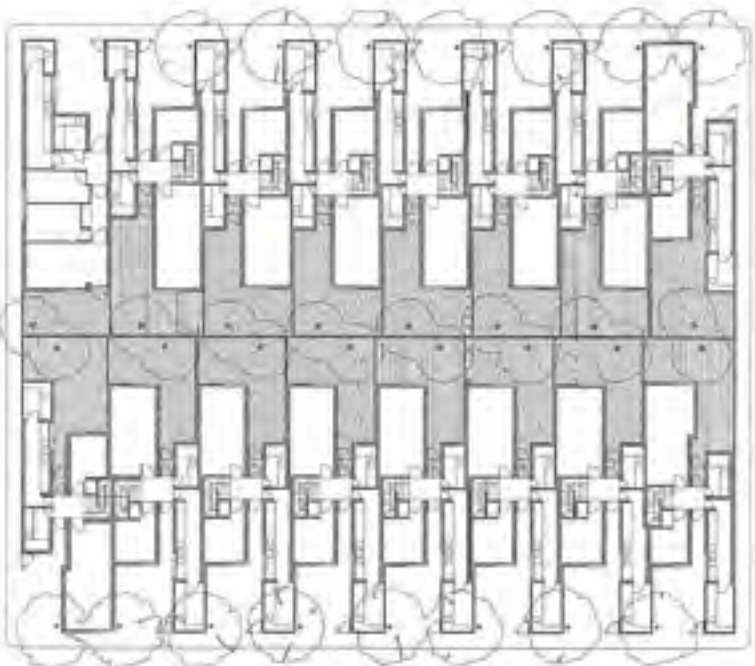
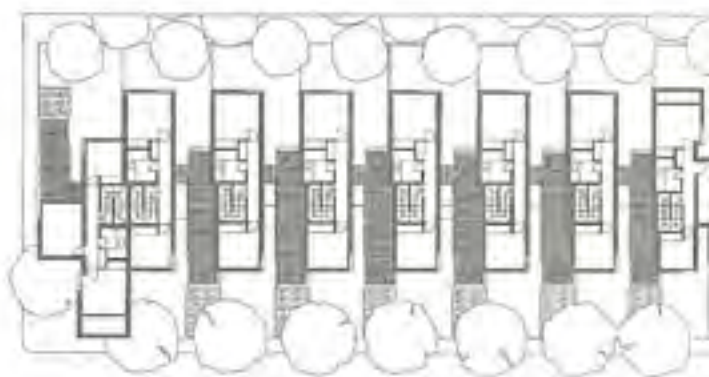
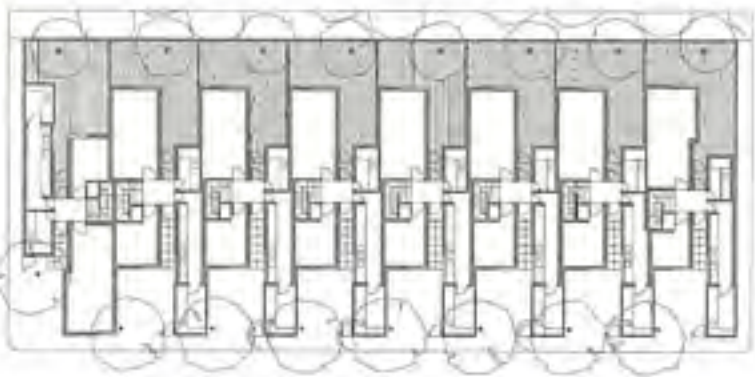












PLANTA BAJA / GROUND FLOOR PLAN

PLANTA ALTA / TOP FLOOR PLAN

URBAN VILLA





***TERRACED HOUSES
ON FLAT GROUND***







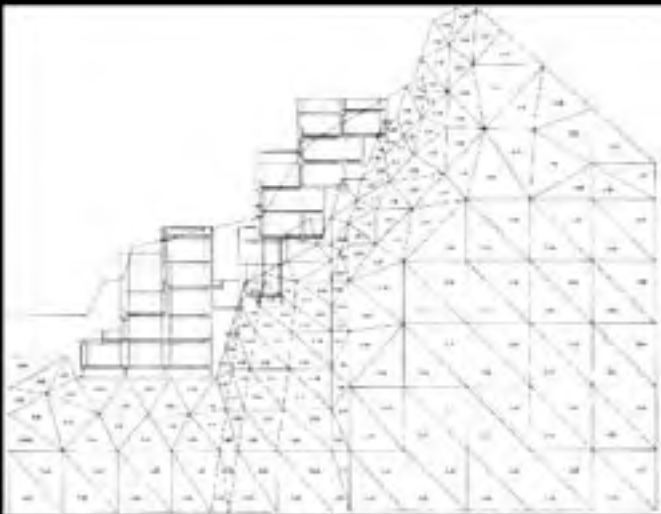


STEPPED HILLSIDE HOUSES



Rokoo Housing Phase I, Kobe, Japan, 1983

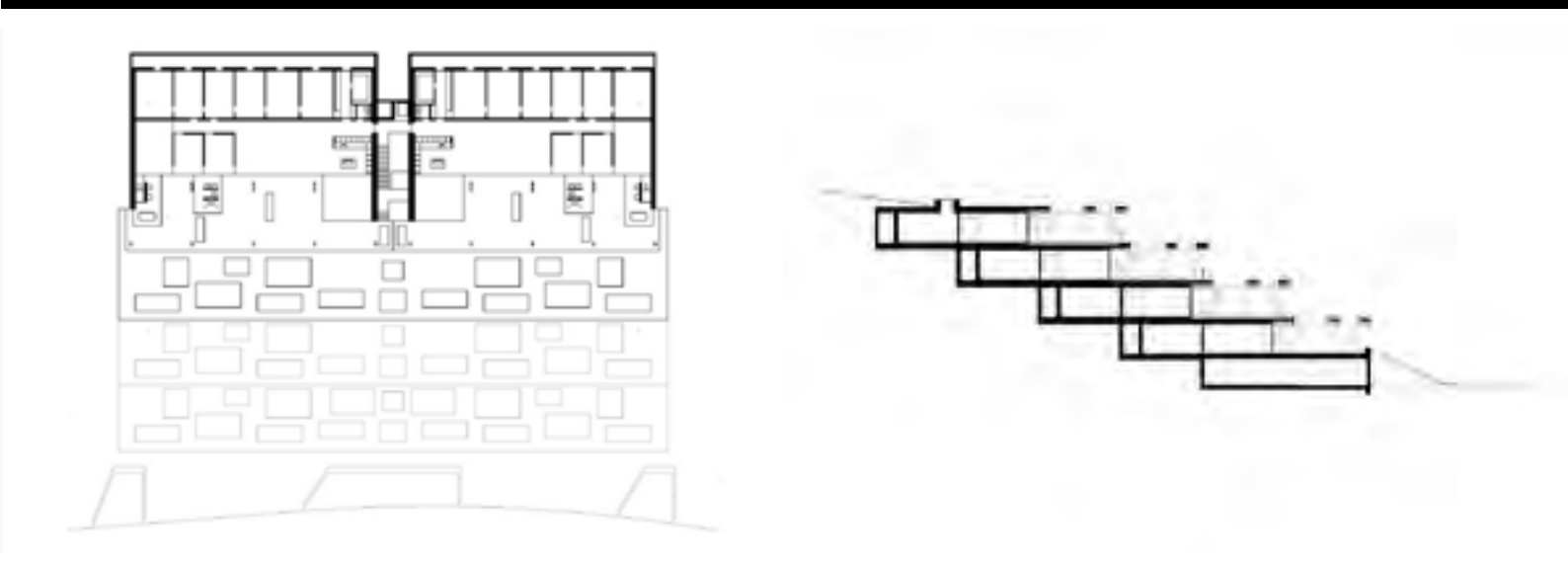




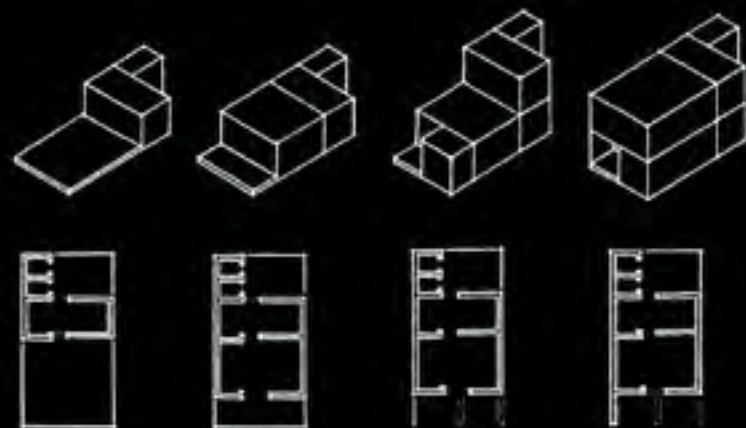








HOUSING FOR THE POOR



TYPOLOGY OF DWELLINGS

Alexis Pontvik Architect MSA/SAR RIBA • Royal Institute of Technology Stockholm

