

EQUITY in public spaces

A TOOLKIT FOR PUBLIC SPACE ASSESSMENT

WHAT IS EQUITY?



Equity involves a fair distribution of resources, opportunities and benefits within a society, to ensure that all individuals have what they need for a just life. The concept of equity is a complex matter and requires careful attention to ensure recognition of all the nuances.

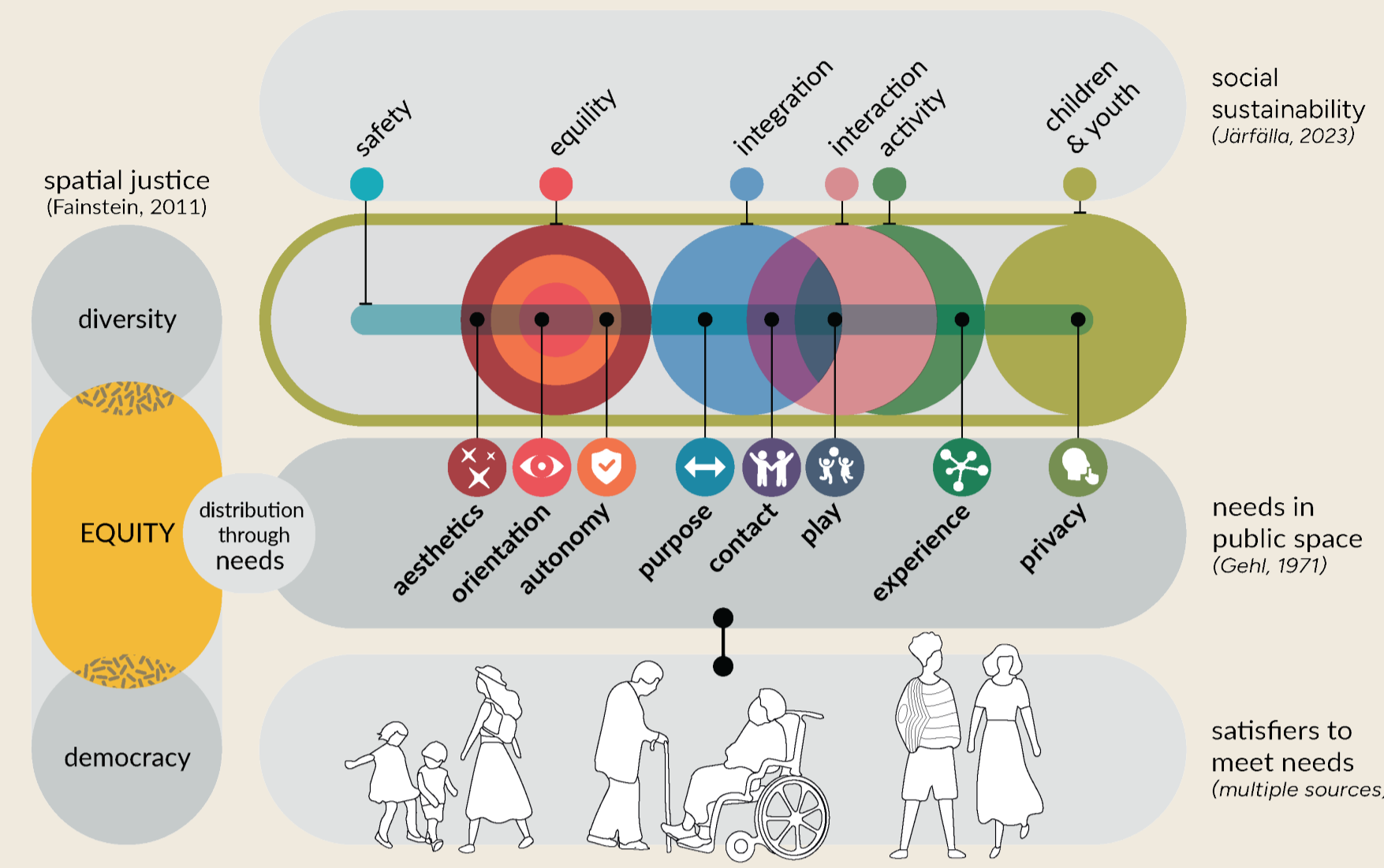
How do we understand and assess equity in the public space?

We propose a toolkit as a first step to unpack the complexity of the concept of equity within urban spaces and recognize the allocations of resources.

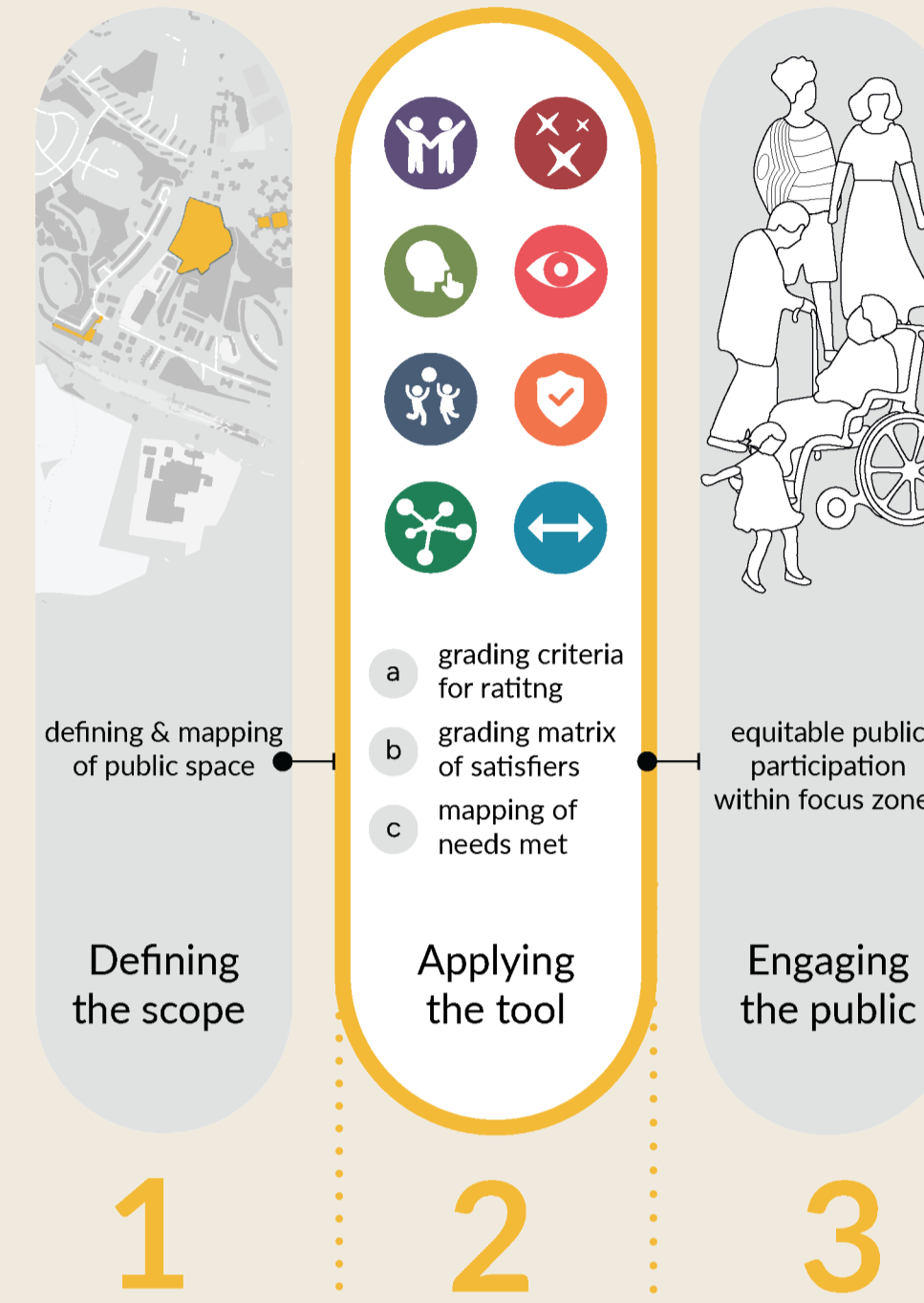
What are the benefits of applying the tool?

- 1st step towards better understanding equity
- Easily applicable and efficient to use.
- Can be further developed with more expertise and public participation.
- Insights to equally allocate resources according to intersectional and demographic needs.

THEORETICAL FRAMEWORK

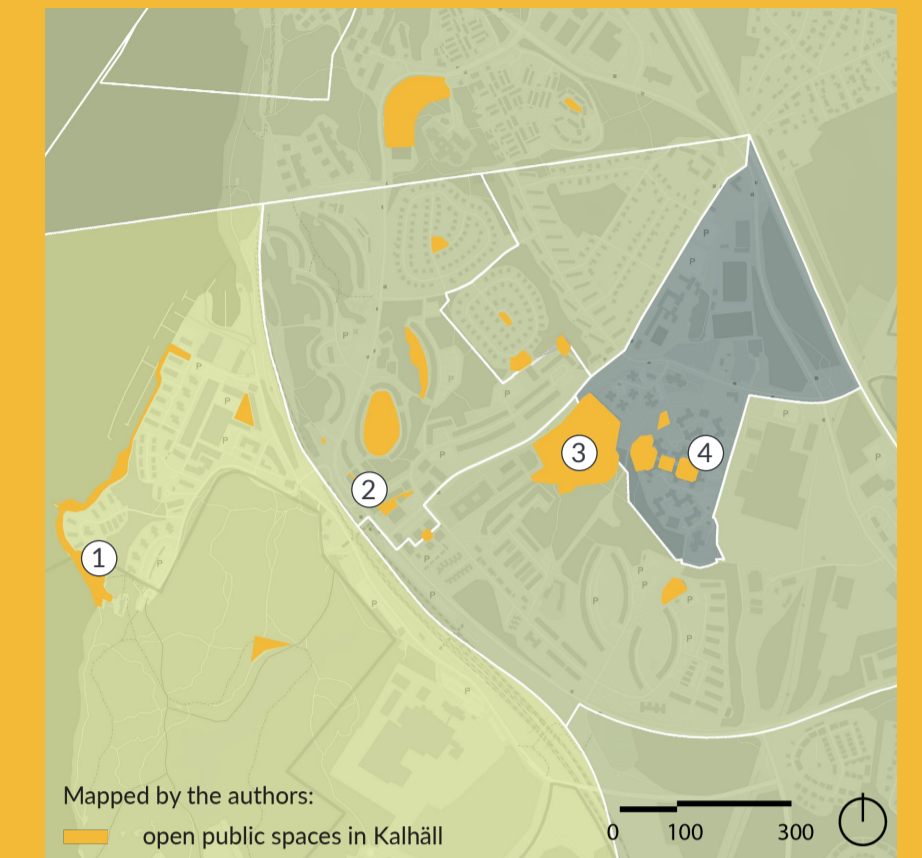


TOOLKIT



PILOT STUDY

Considering the economic and social conditions, we chose Kallhäll as the location for our pilot study to understand equity and resource allocation within public spaces. Our focus involved an examination of 4 distinct public spaces, each characterised by its own set of features and conditions. This approach aims to provide a more nuanced understanding of how the features provide to the needs and satisfiers, contributing to a more comprehensive view of the broader socio-economic situation.

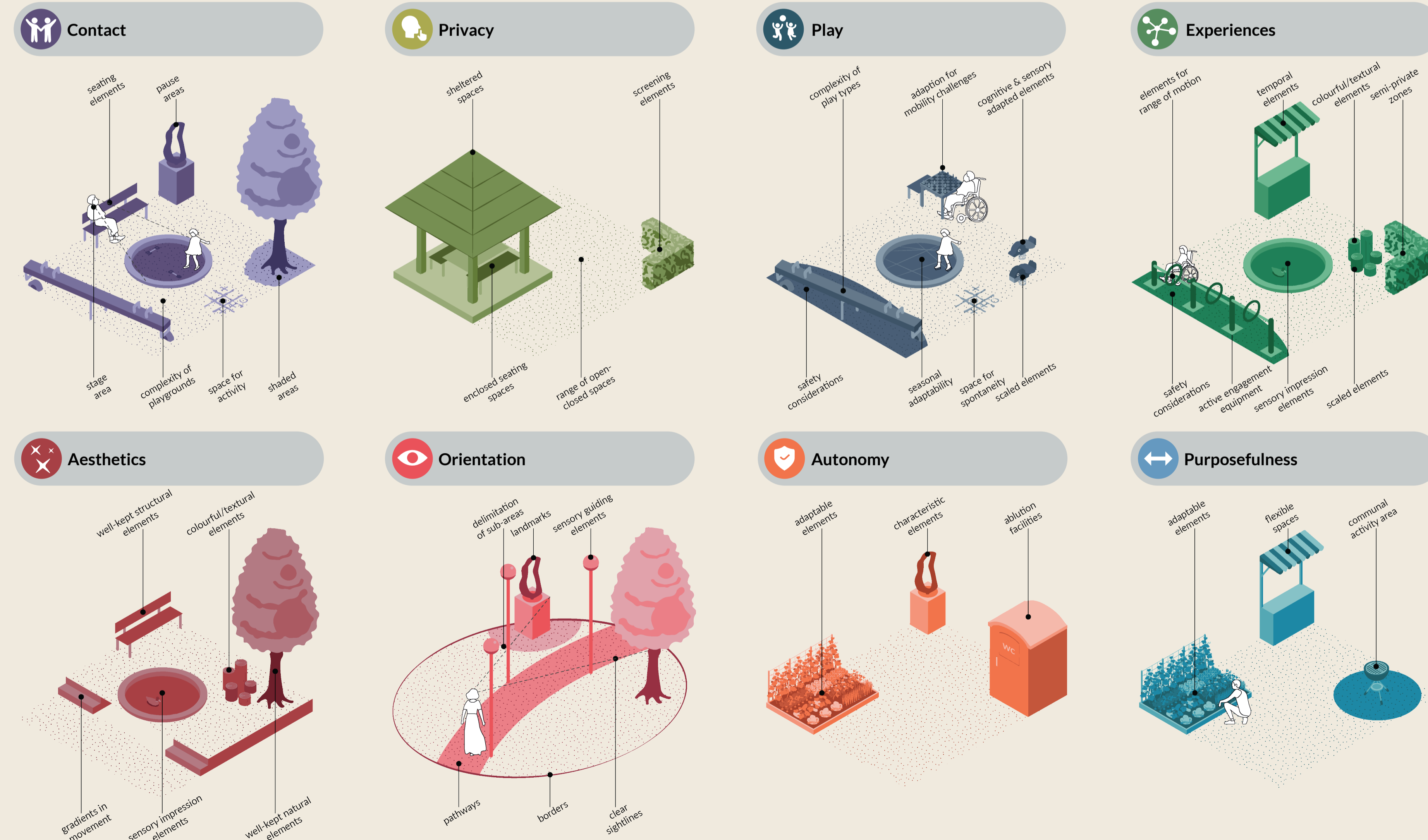


Socio-economic conditions and open public spaces

On the basis of Järfalla's classification of types of areas (segregationsbarometern.boverket.se/kommun/jarfalla):

- Area type 5 - areas with very good socio-economic conditions
- Area type 4 - areas with good socio-economic conditions
- Area type 2 - areas with socio-economic challenges

SPATIAL SATISFIERS FOR NEEDS IN PUBLIC SPACES



RESULTS



Pilot study results

- open public spaces in Kallhäll
- open public spaces in Kallhäll graded in pilot study