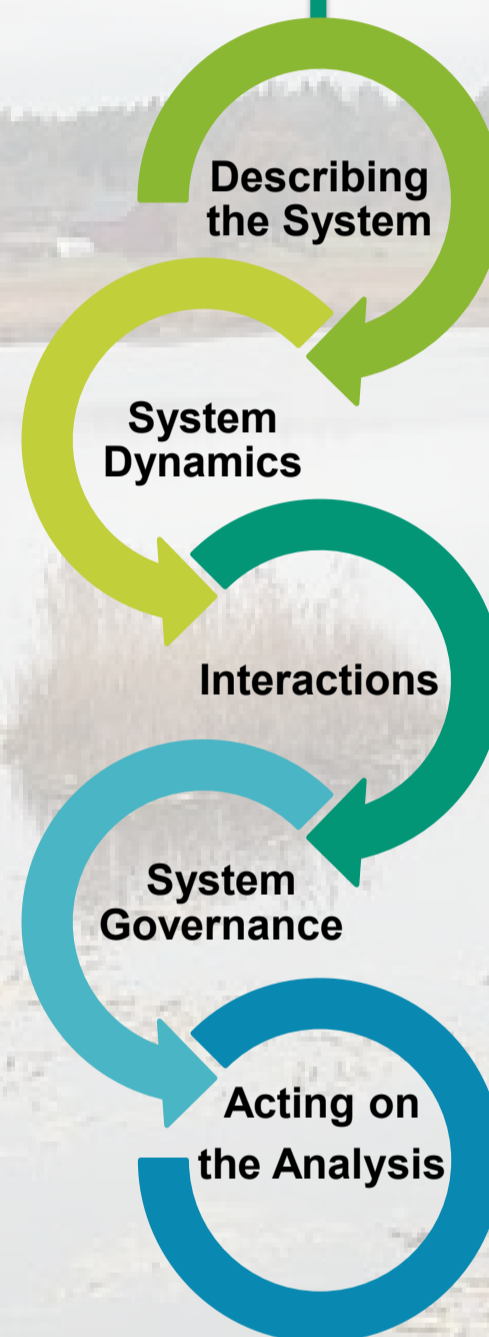
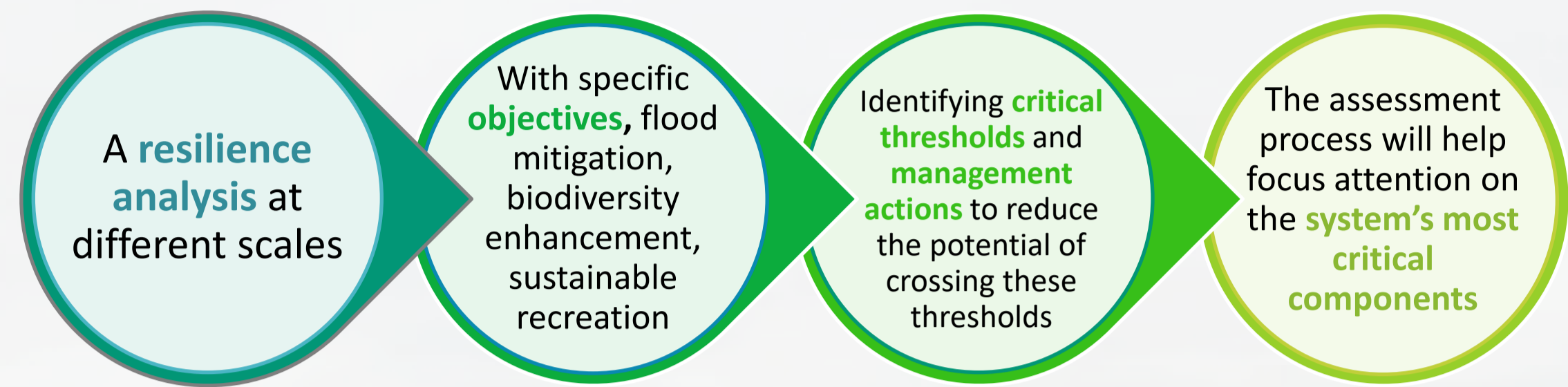
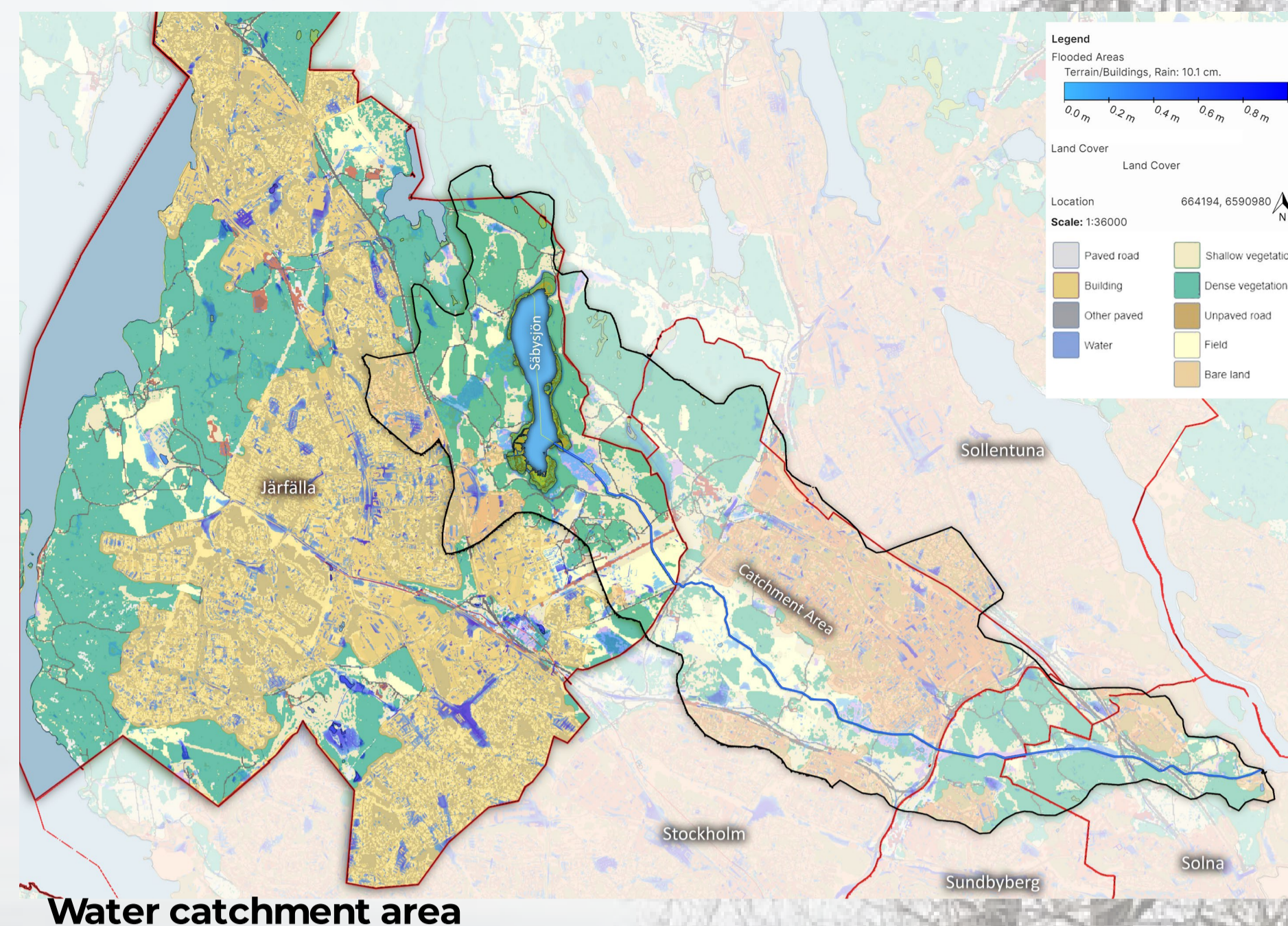
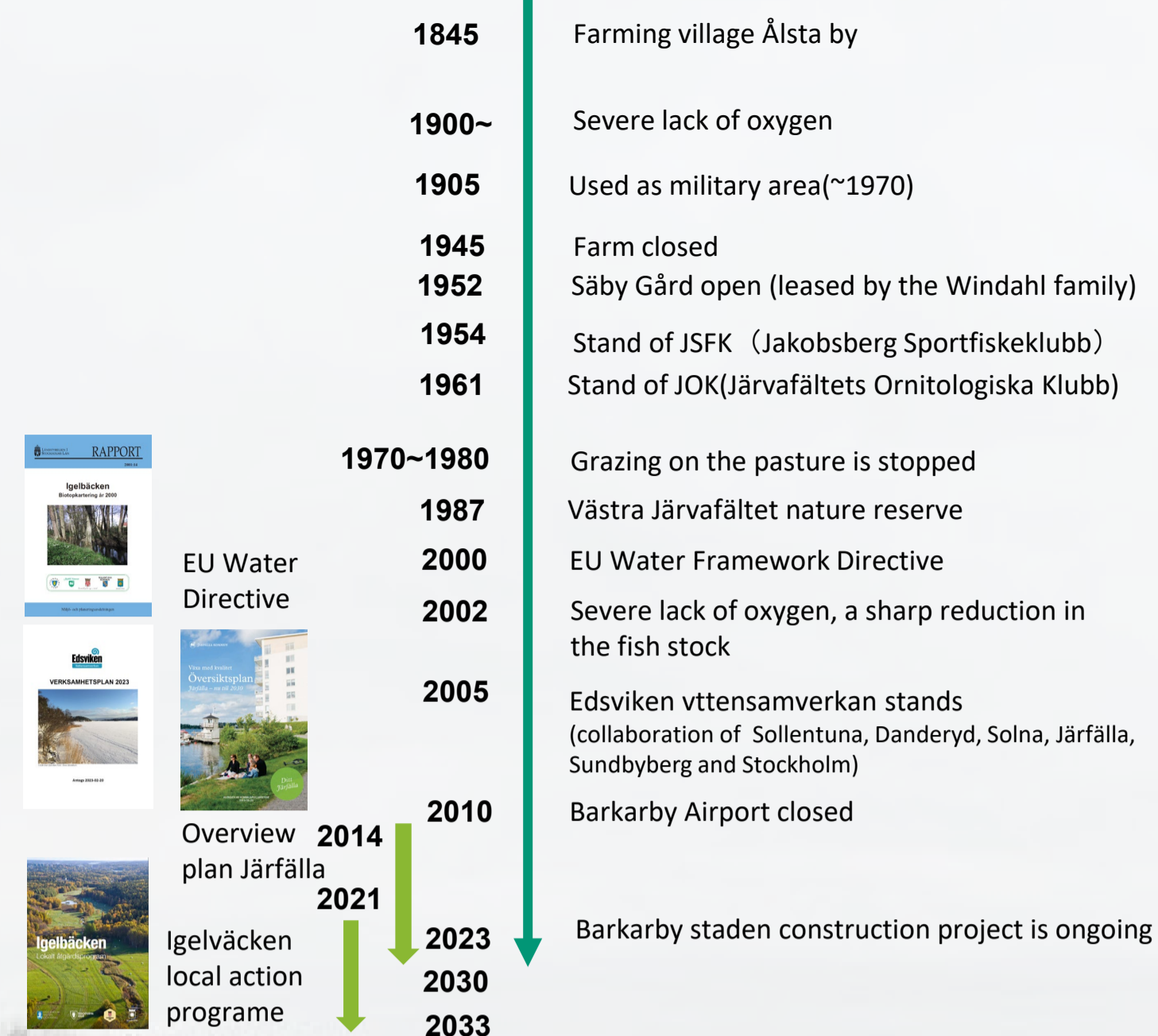
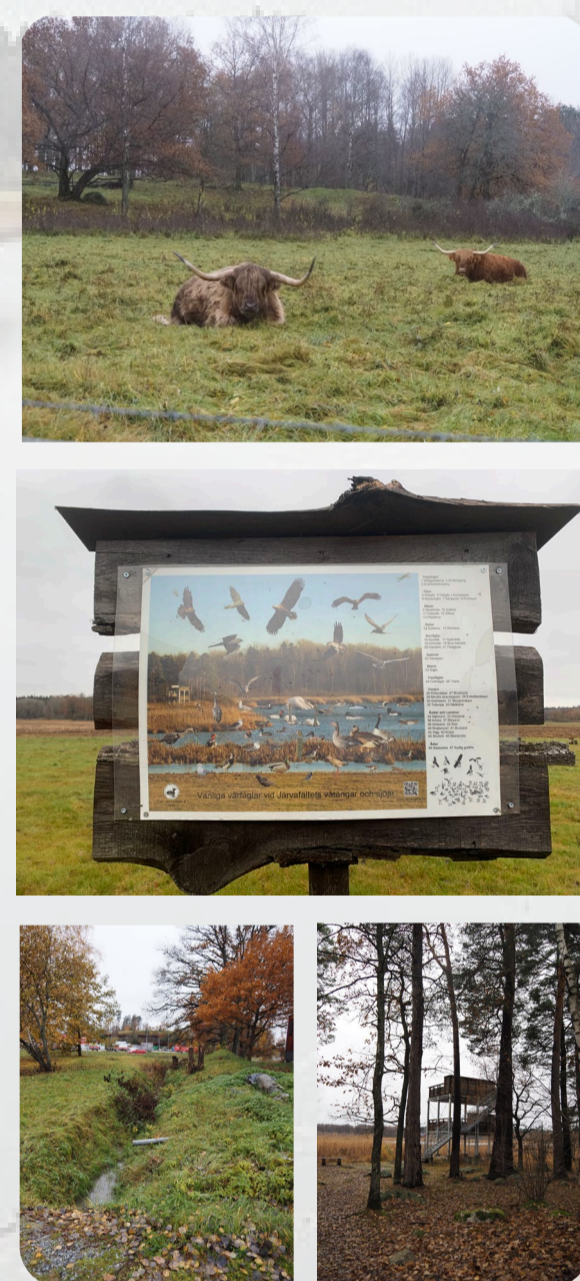


# Resilient Säbysjön

## A Collaborative Endeavor for Ecosystem Restoration and Community Engagement

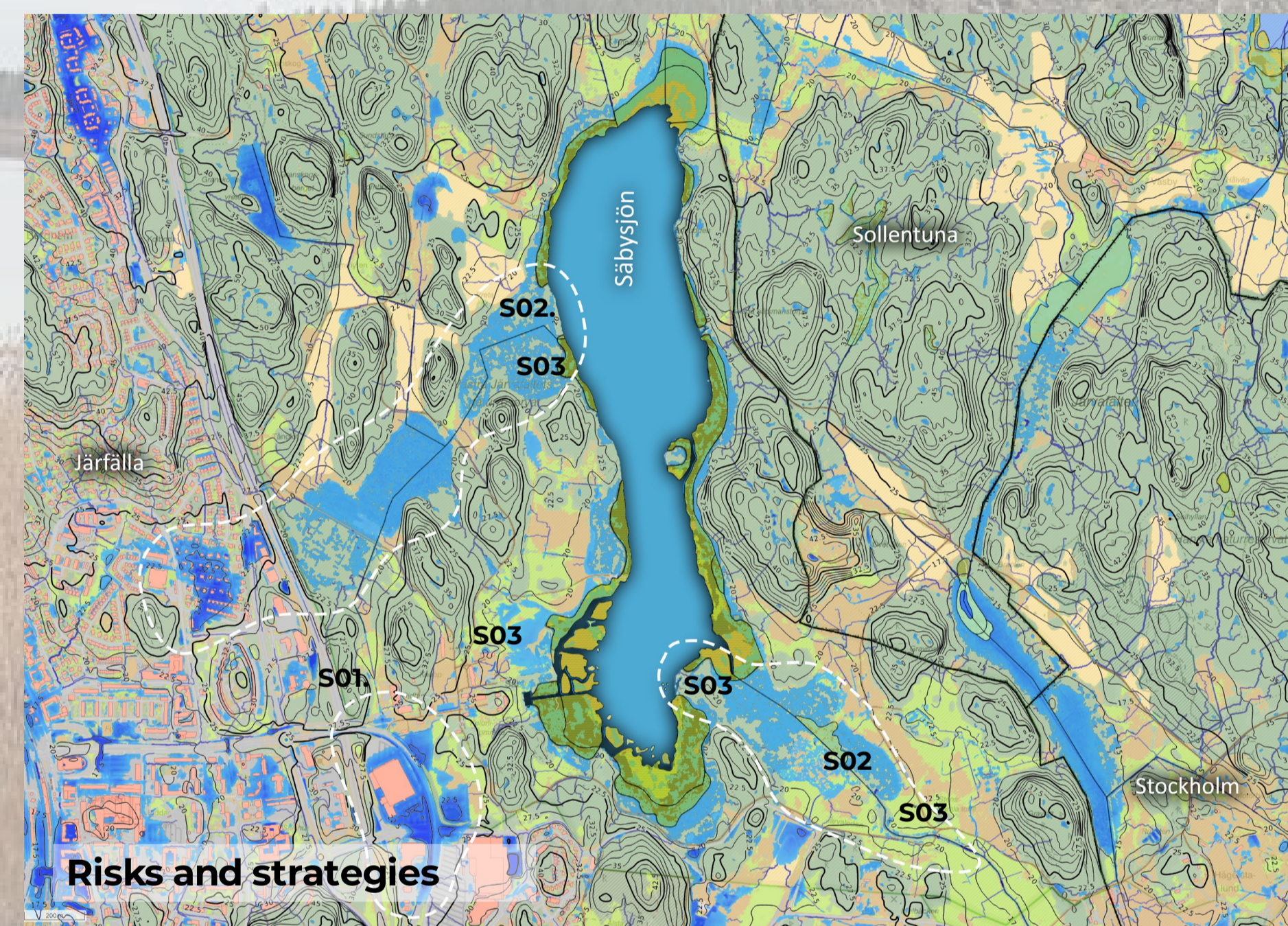


**Catchment Scale**  
**Socio-ecological Perspective**  
**Cross-boundary Collaboration**  
**Water Network Sensitive**

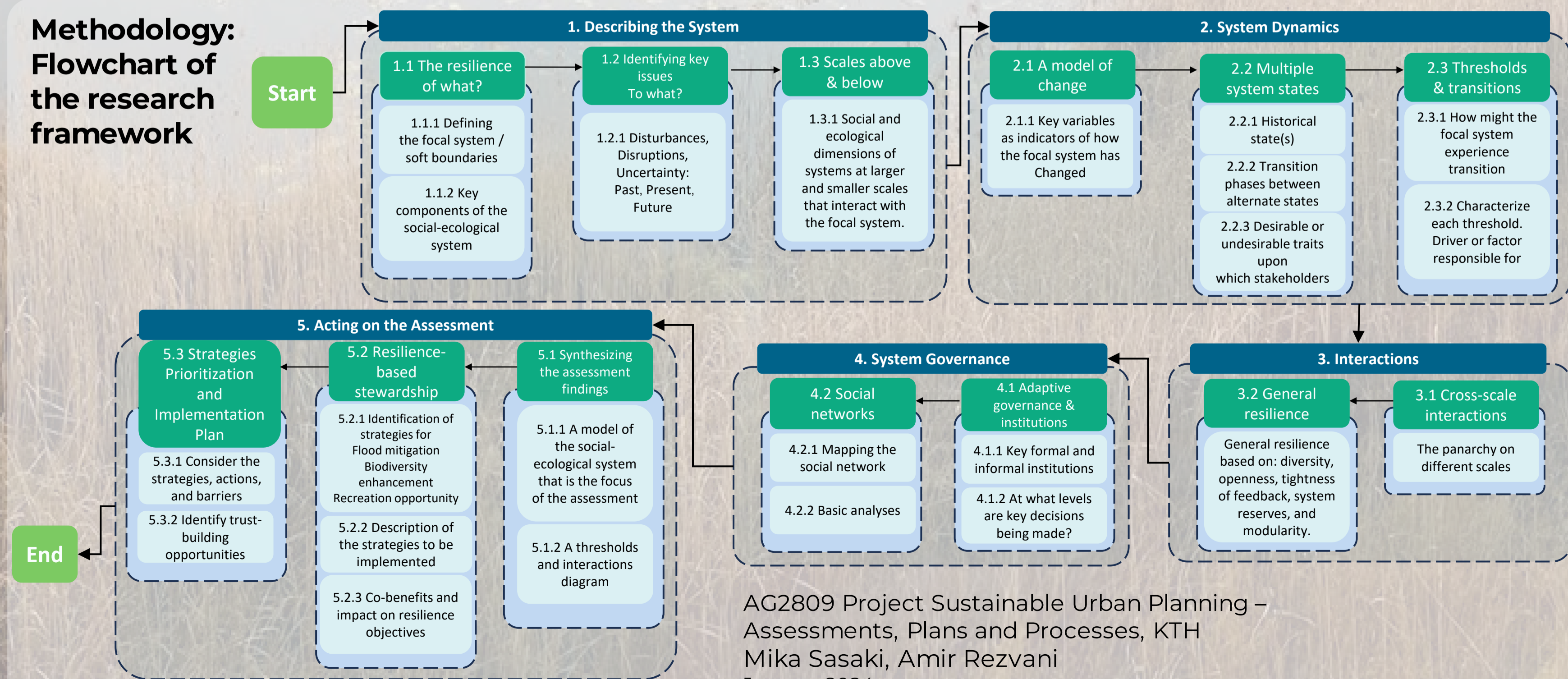


- S1 Green Infrastructure Development
- S2 Riparian Restoration and Buffer Zones
- S3 Community-Based Monitoring Programs
- S4 Sustainable Land Use Practices
- S5 Educational Outreach and Interpretive Programs
- S6 Ecotourism Development

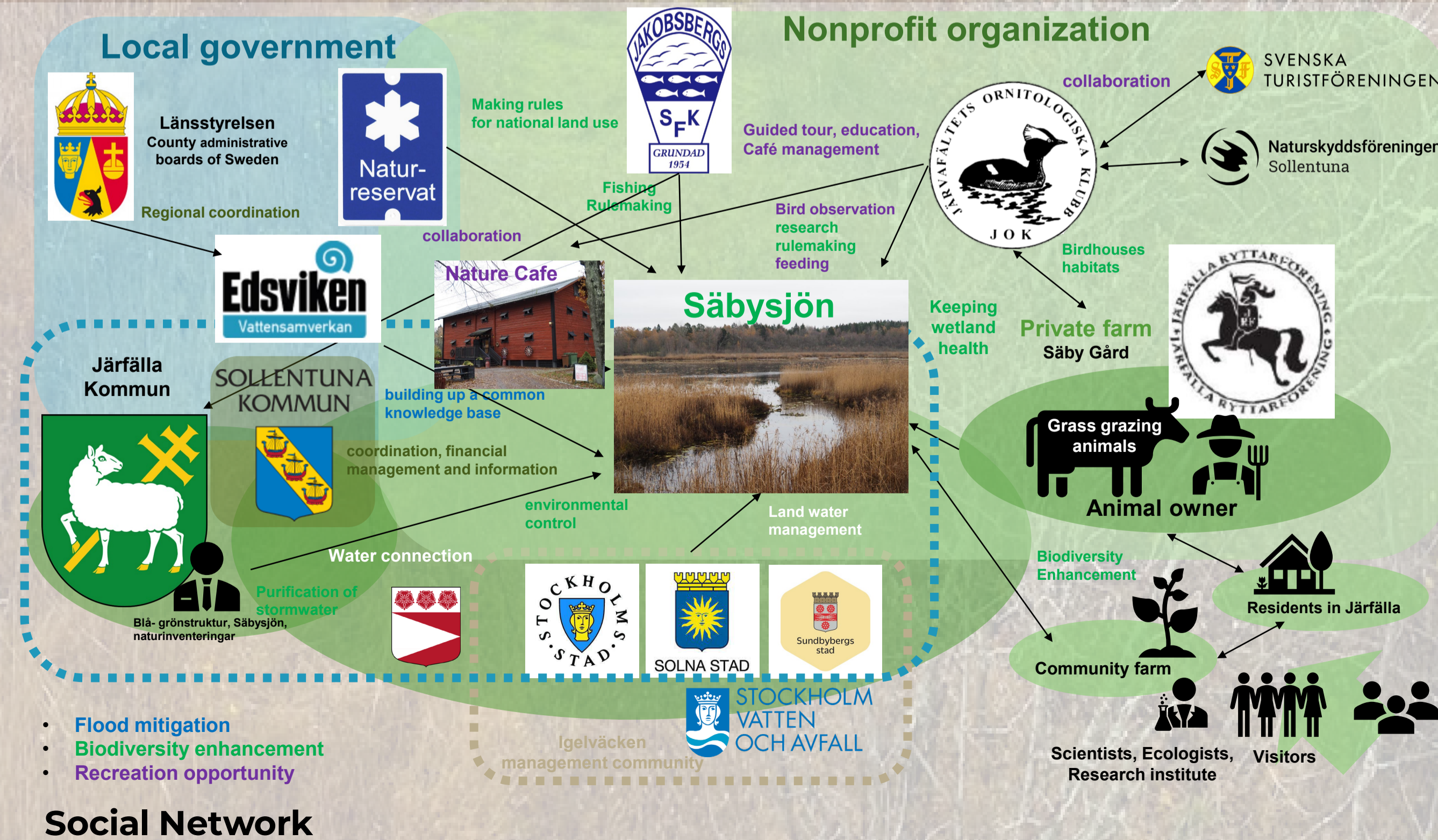
Resilience-based Strategies



### Methodology: Flowchart of the research framework



AG2809 Project Sustainable Urban Planning – Assessments, Plans and Processes, KTH  
 Mika Sasaki, Amir Rezvani  
 January 2024



- Flood mitigation
- Biodiversity enhancement
- Recreation opportunity

### Social Network