

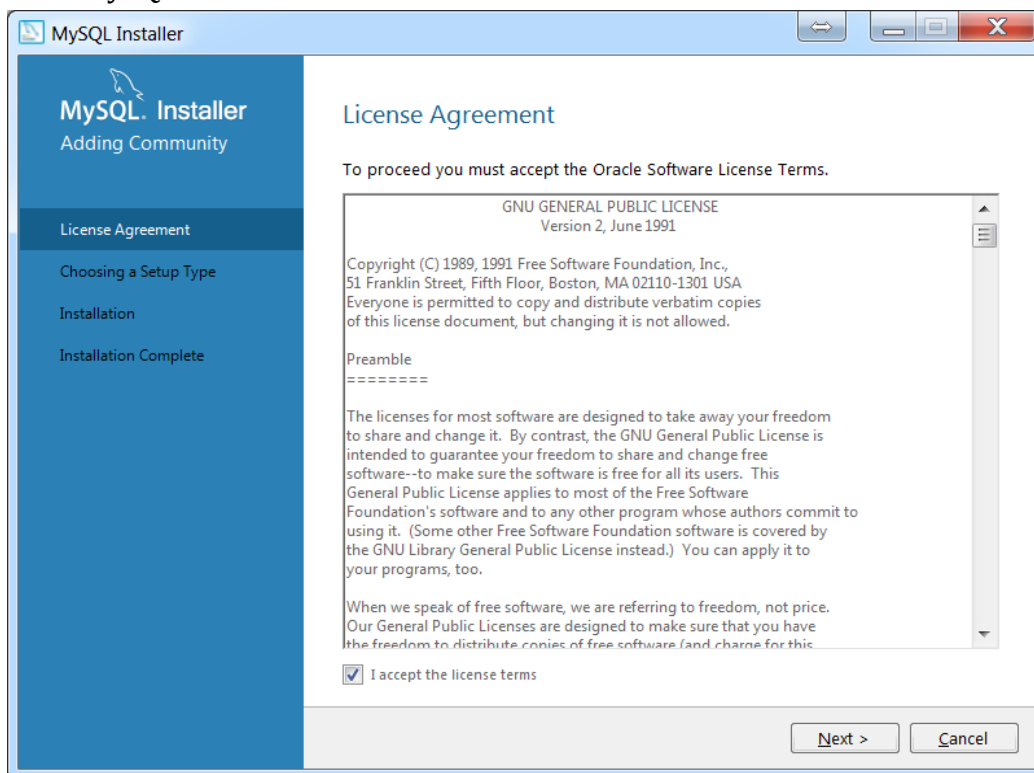
Installation MySQL programs

- If you have Windows on your laptop, you can simplify your life and download MySQL Installer. It will allow to install all required programs in one package:
<http://dev.mysql.com/downloads/windows/installer/>
- If you have MacOS or Linux, you will have to do a little more work. You have to download and install 3 following programs:
<http://dev.mysql.com/downloads/mysql/>
<http://dev.mysql.com/downloads/workbench/>
<http://dev.mysql.com/downloads/connector/j/>

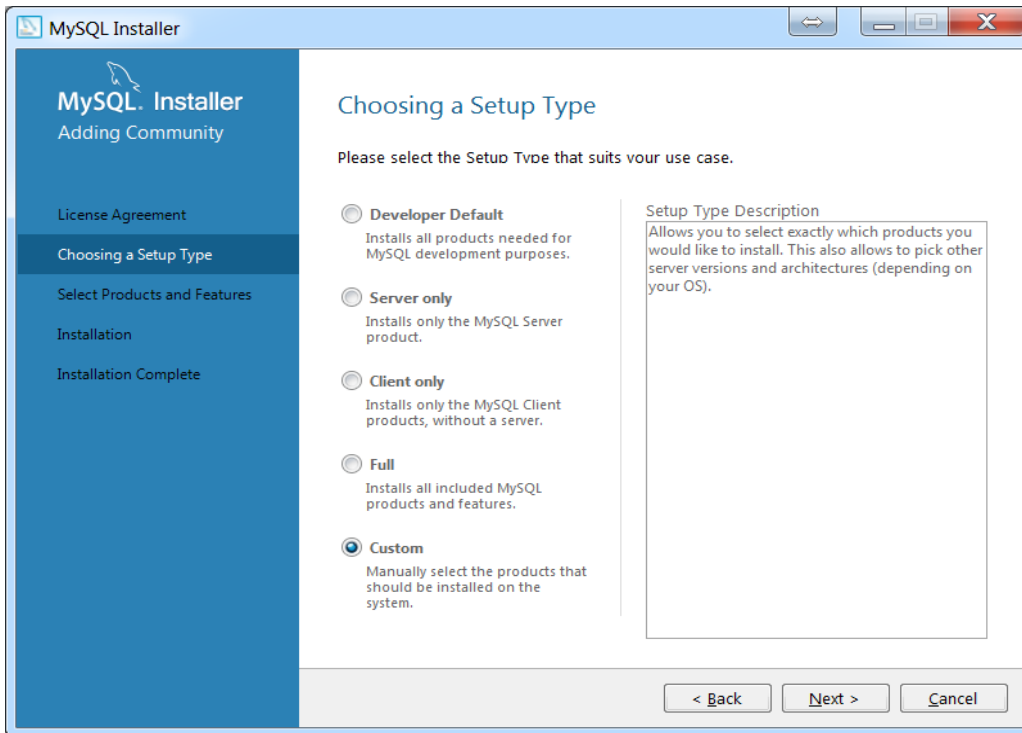
** Note! Don't choose "Login" or "Sign up" when downloading! Just select "No thanks, just start my download" in the bottom of the page.*

Guidance for installation of MySQL programs on Windows machine

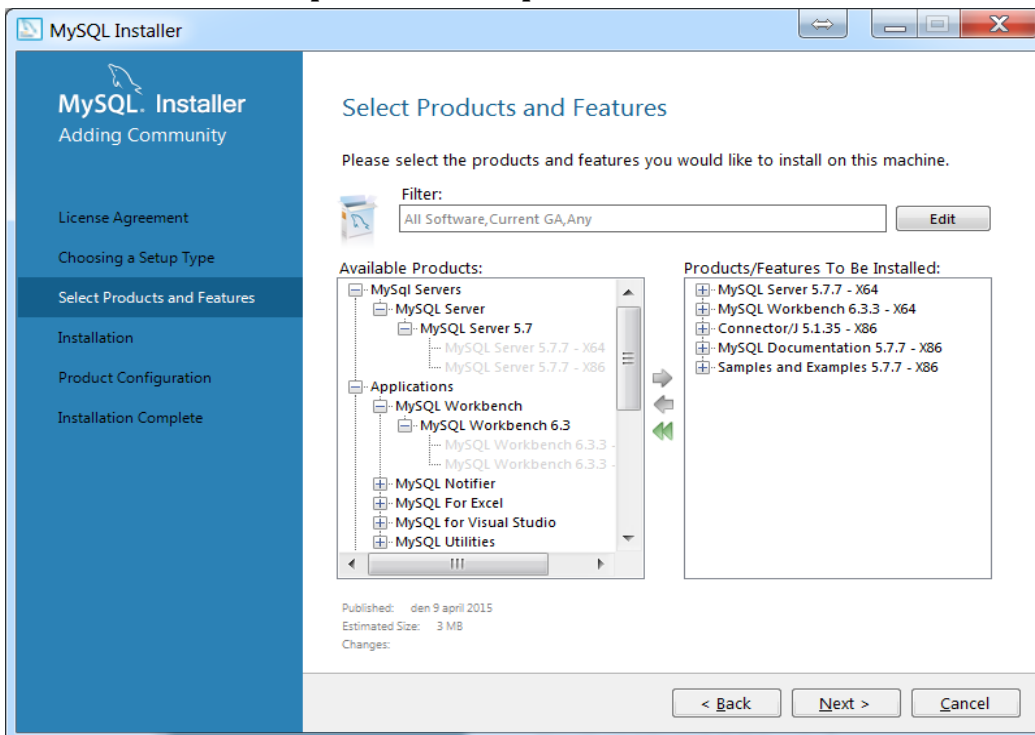
- Start MySQL Installer



- Select Custom Setup

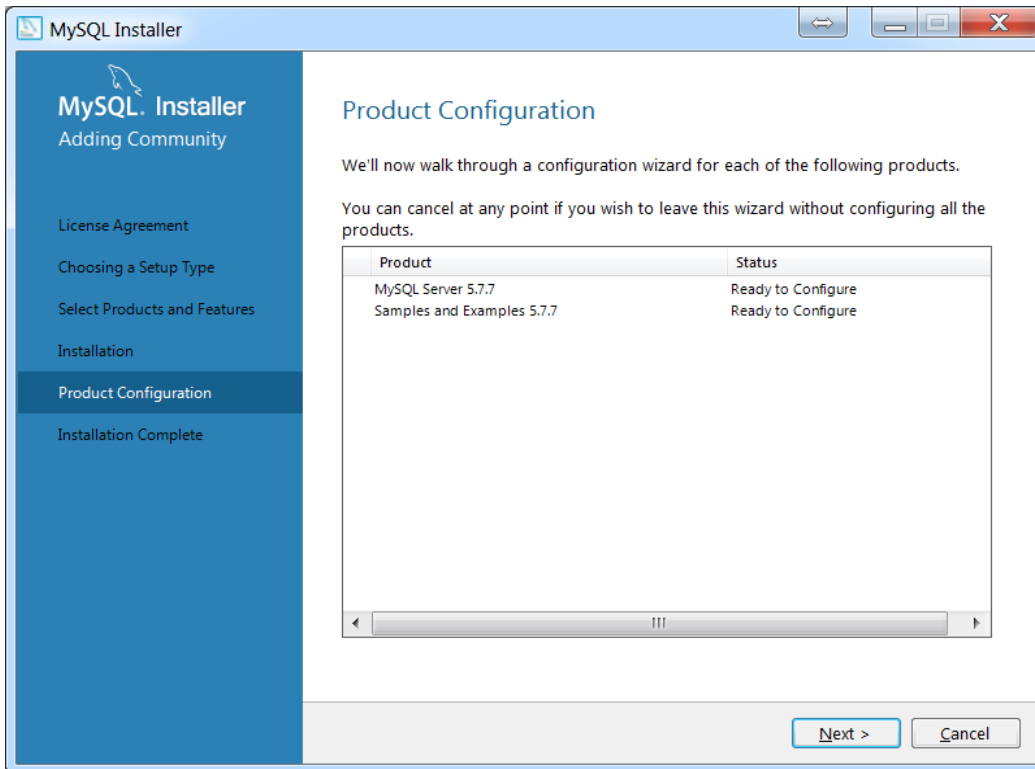


- Select the following products – **MySQL Server, Workbench, Connector/J, MySQL Documentation, Samples and Examples**

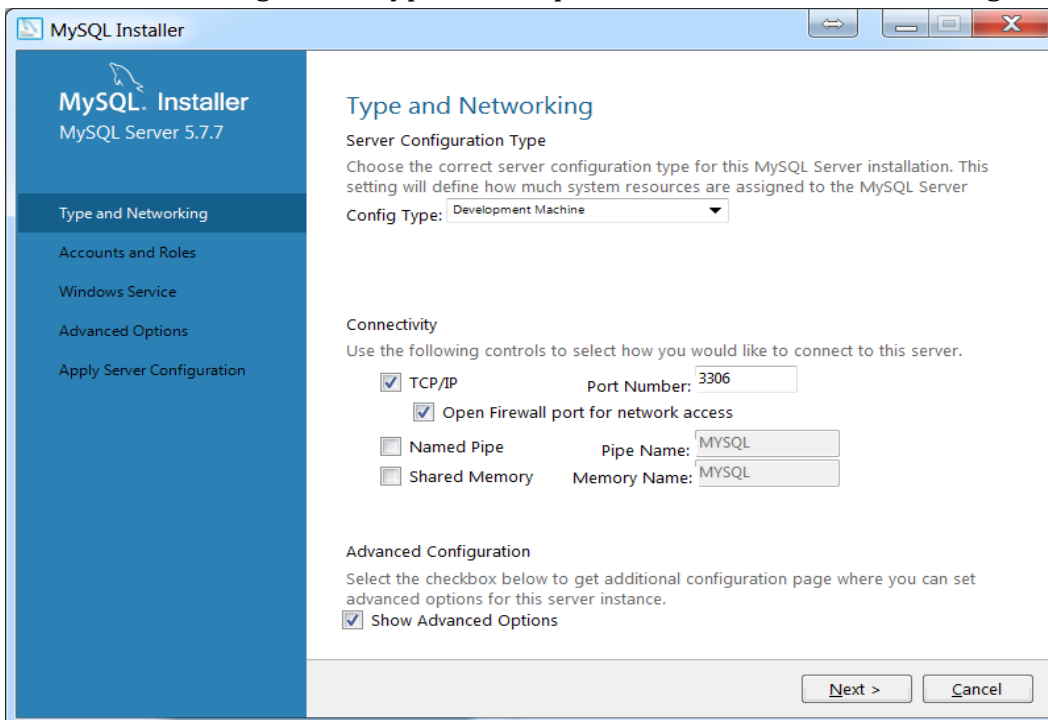


- Press Execute to install products. If you have problems with some installations, just press "Try again".

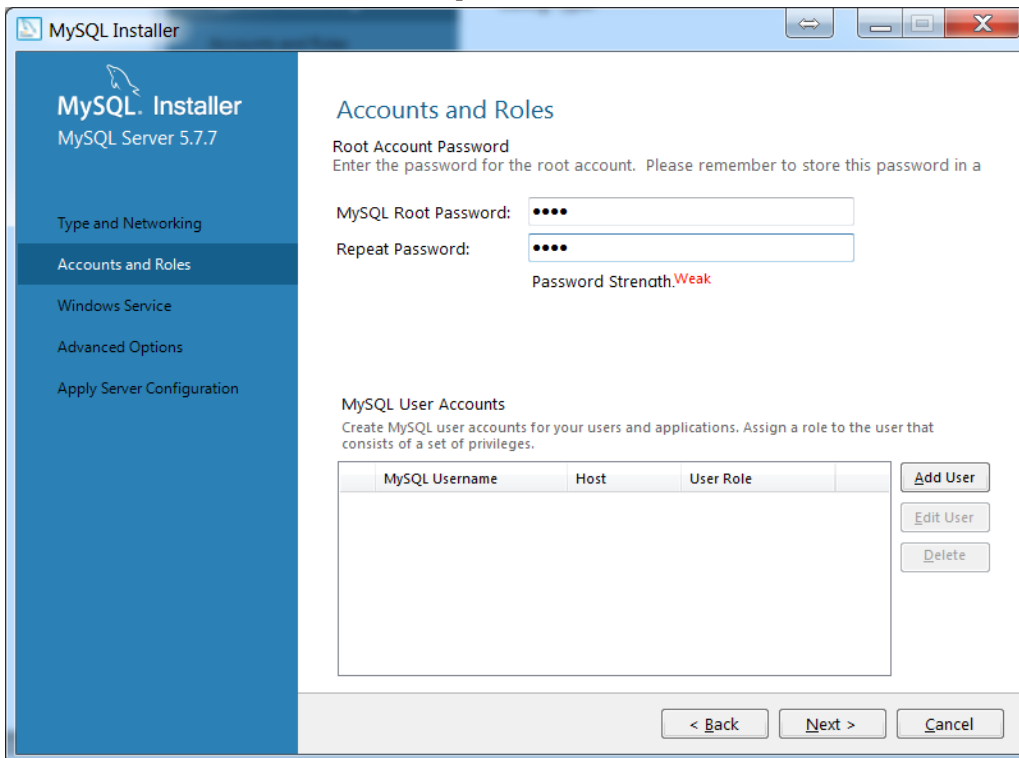
- Configure the MySQL Server



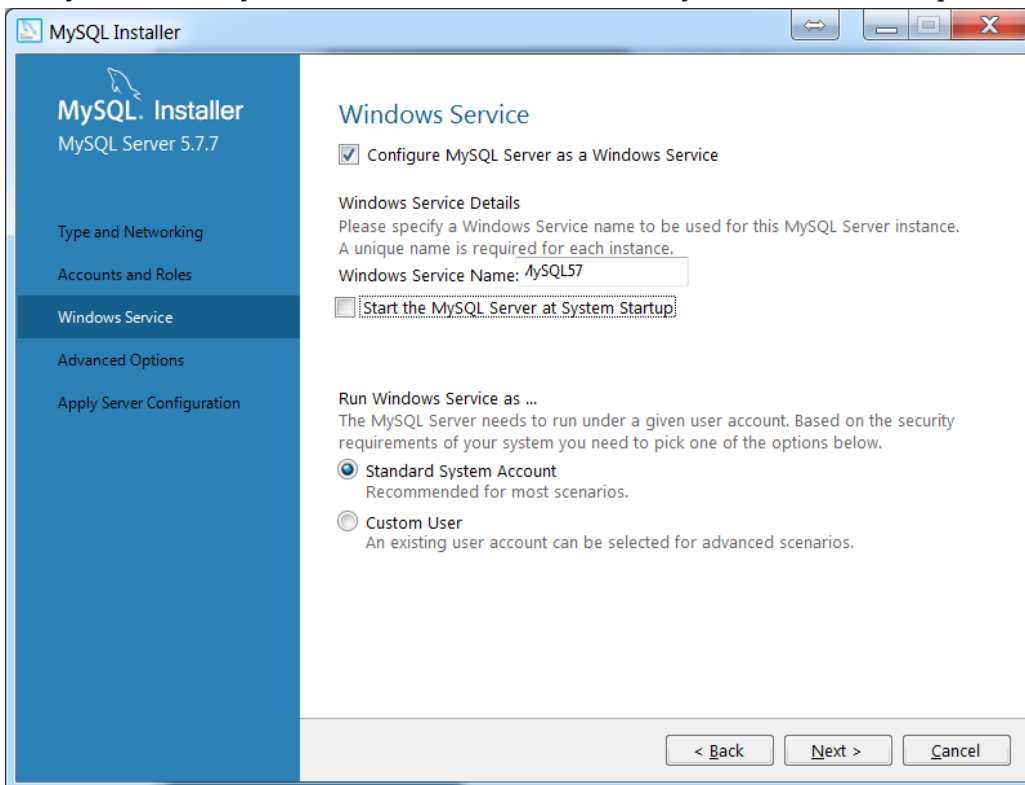
- Select server configuration type "Development machine" and don't change other settings.



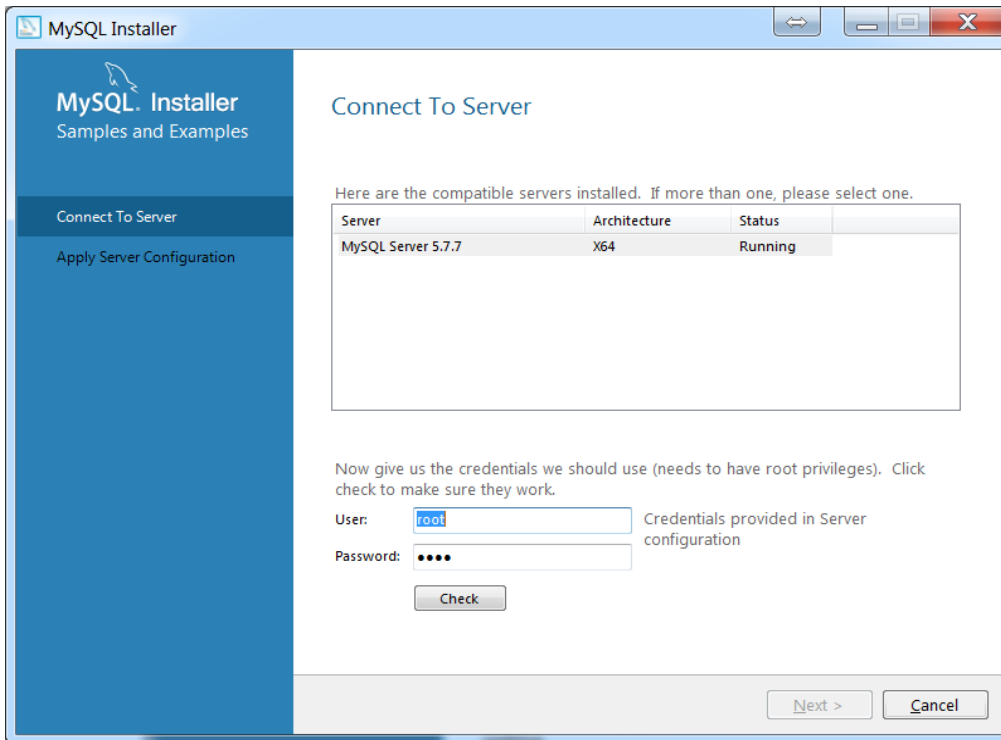
- Provide a password to *root* account (a possible option is “root”). You can also create another user here, but it’s not required for the course.



- Select or deselect “Start the MySQL Server at System Startup”, but remember to **activate** it every time when you want to access a database if you **deselect** the option.



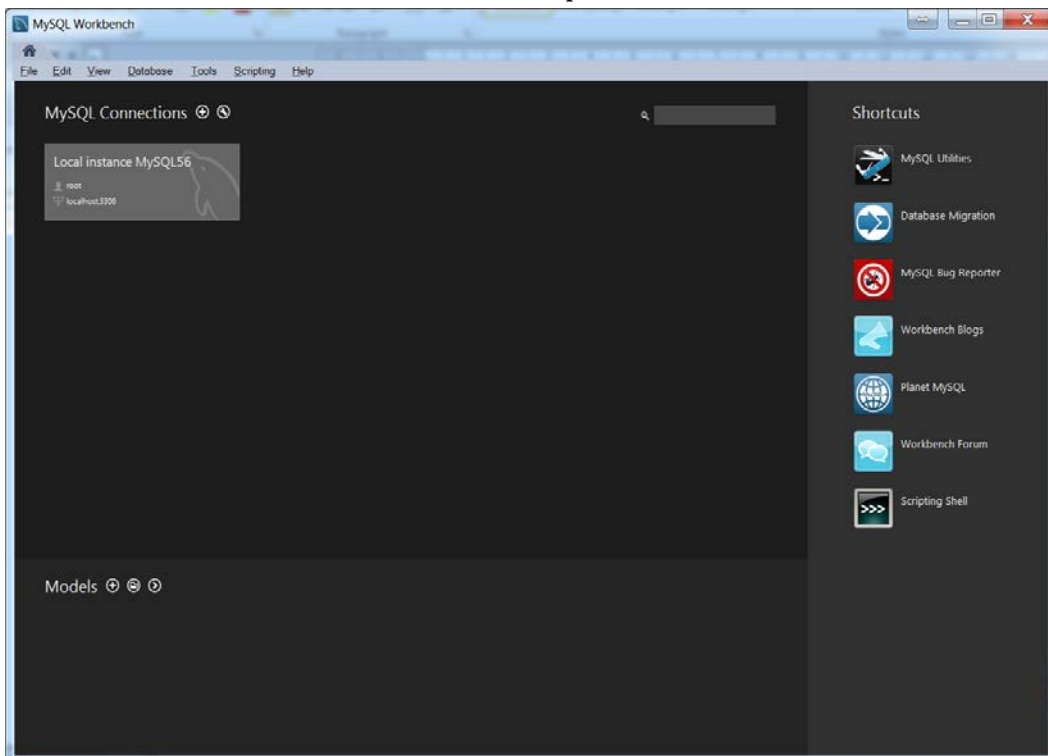
- Check if you connection with MySQL Server is working properly



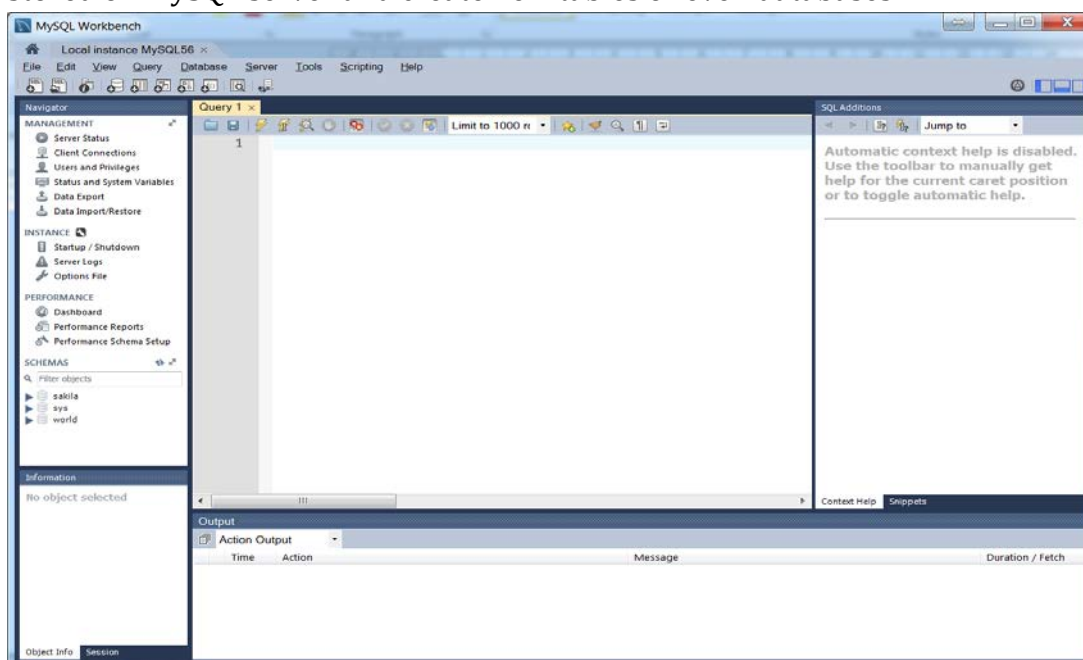
- Apply configurations and start MySQL Workbench.

MySQL workbench interface

- Double-click on "root" account, enter the password

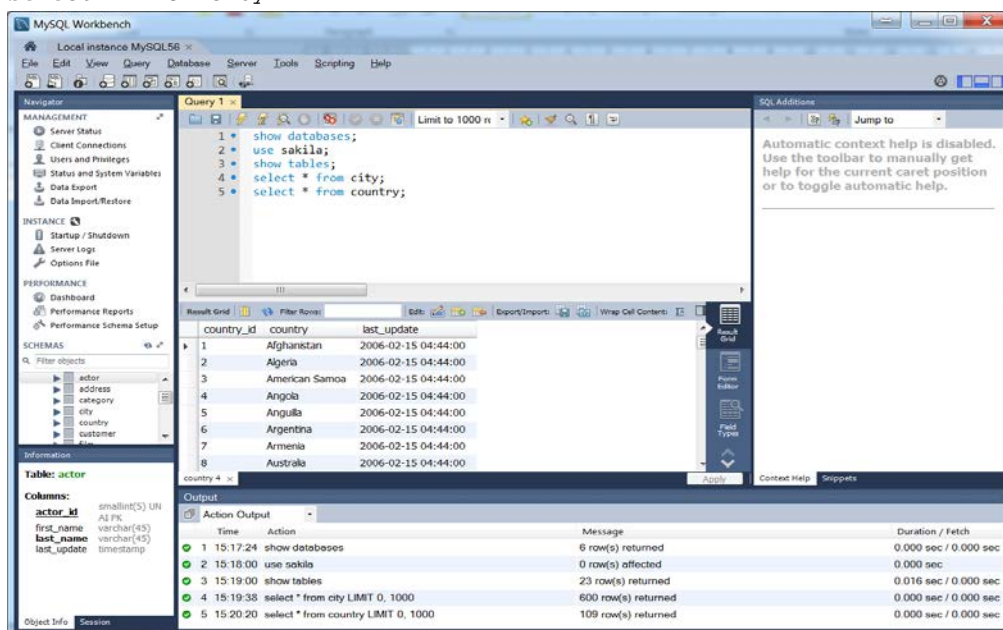


- This is an interface of MySQL Workbench. Here you can drop any SQL query, access databases stored on MySQL server and create new tables or even databases.



- Copy the following queries into Query window:

```
show databases;
use sakila;
show tables;
select * from city;
```



- Create a database "flowers" and table "iris" using the following queries:

```
create database flowers;
create table iris(type varchar(255), sepal_length double, sepal_width double,
petal_length double, petal_width double);
```

- Insert a few records into the table "iris" with the following query:

```
insert into iris values('iris-setosa', 5.1, 3.5, 1.4, 0.2);
```