

Wireless Infrastructure Deployment and Economics (IK2514)

4 November: Start of HW1, review groups and guidelines
More on markets & actors and different types of businesses

Ahmad – Australia
Menatalla – Morocco
Rachaen – Portugal
Sikandar – Estonia
Dusan – Denmark
Ganapathy - Finland
Kirill – Greece
Jin – Kenya
Maria – Ireland
Oscar – Mexico
Pehr – Germany
Istiak – France
Athanasios - UK
Mårten - Austria

Home work 1 deadlines 2014

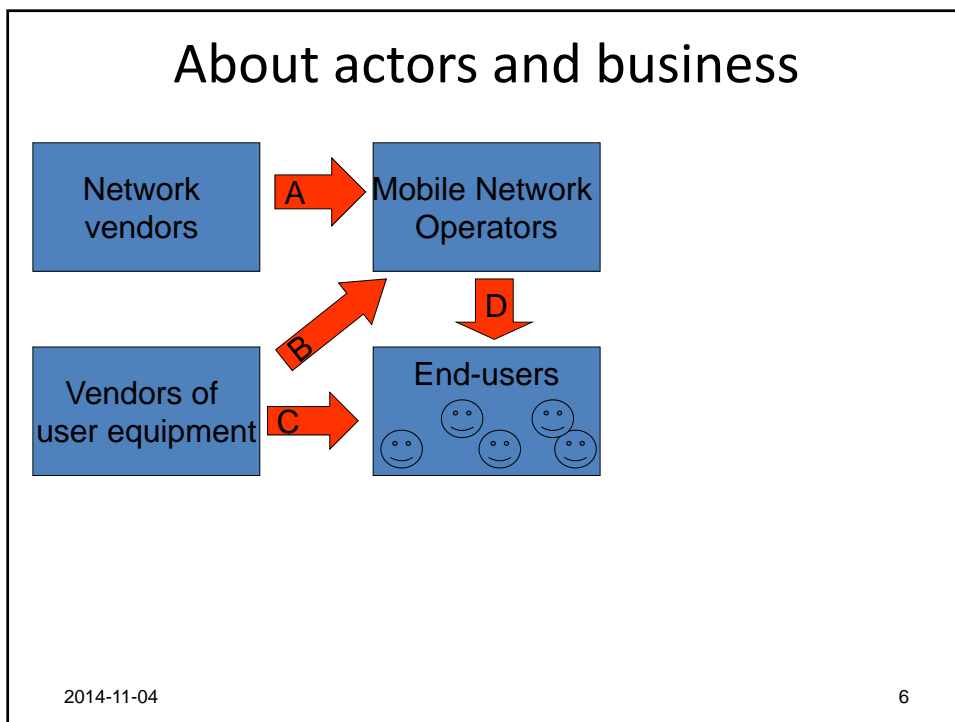
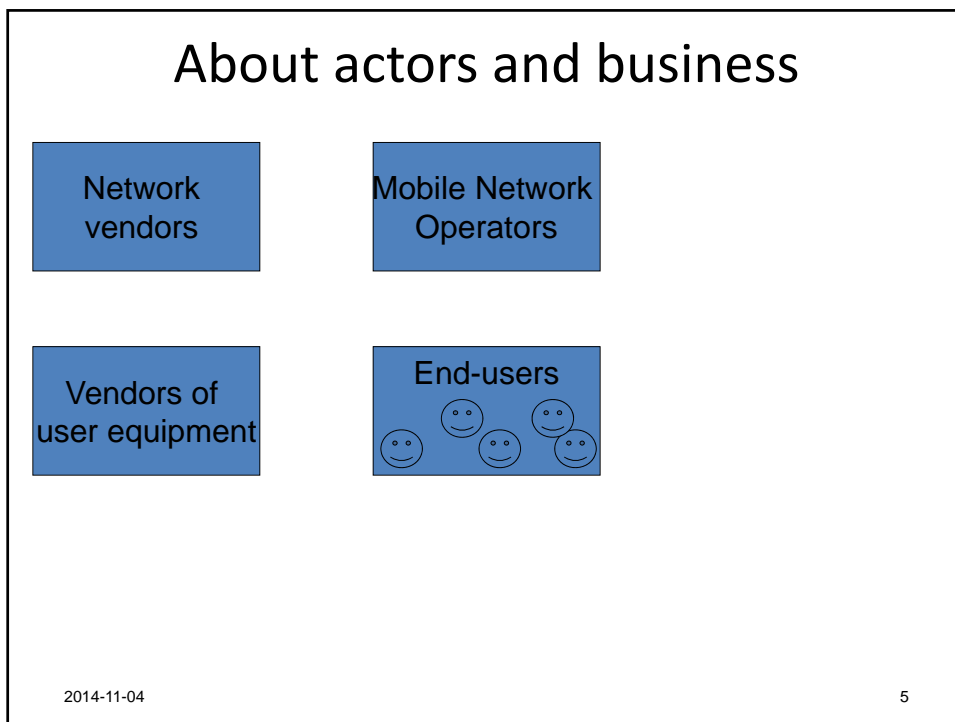
Activity	Home work 1
Home work is assigned to each student	13-11-04 ; 12.00
Draft report sent to teacher & reviewers filename: "country"_HW1_1.doc	13-11-07; 18.00
Review comments sent to teacher and authors filename: "country"_HW1review_by"name"	13-11-10; 10:59
Review session and discussions in review groups (room 208 available, no teacher present)	13-11-10; 13:00-15:00
Send slides for oral presentation to teacher filename: "country"_HW1.ppt	13-11-17; 07:59
Oral presentation of HW1 Each review group will present together	13-11-17 ; 13:00-15:00 (16:00) Max 5 min per country
Send final report version to teacher filename: "country"_HW1_2.doc	13-11-21; 11:59
Feedback and HW grading send to student	13-11-28; 12.00 latest

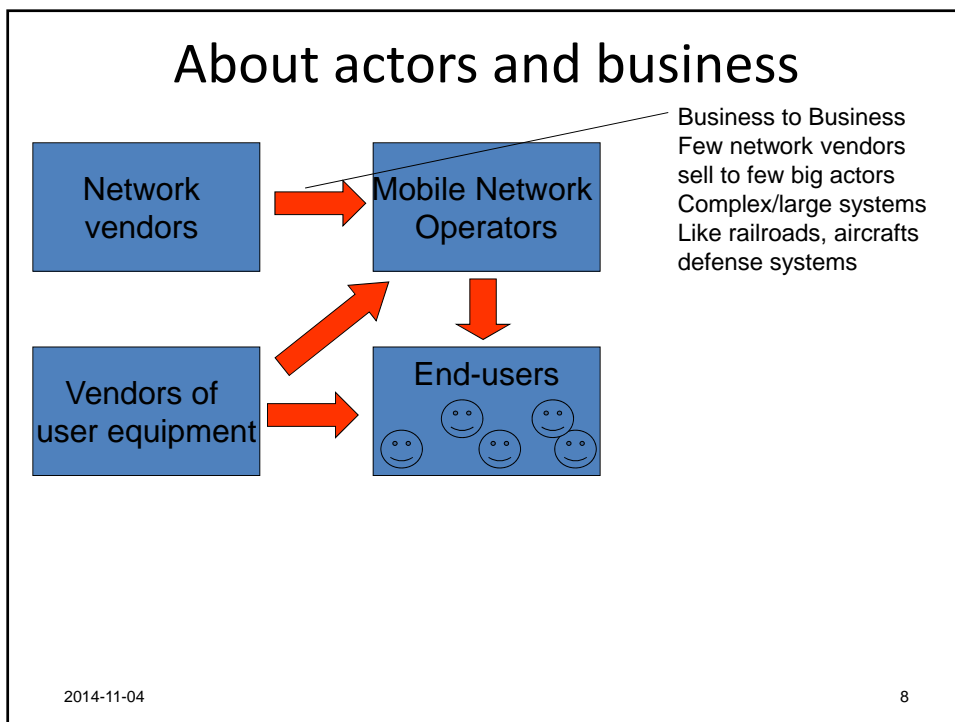
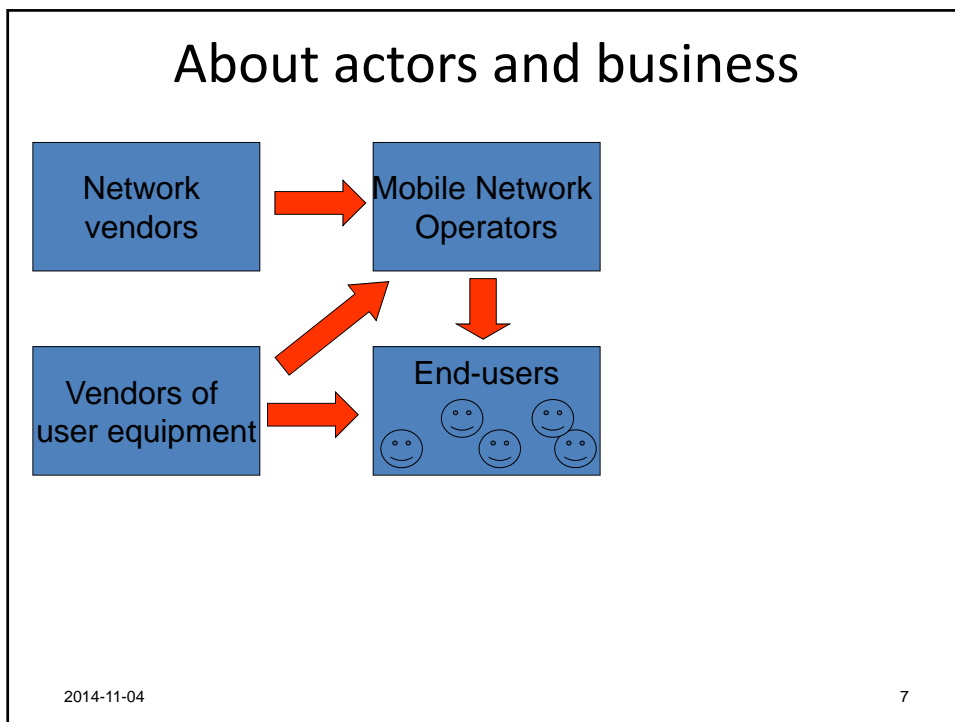
Home work 1 review groups 2014

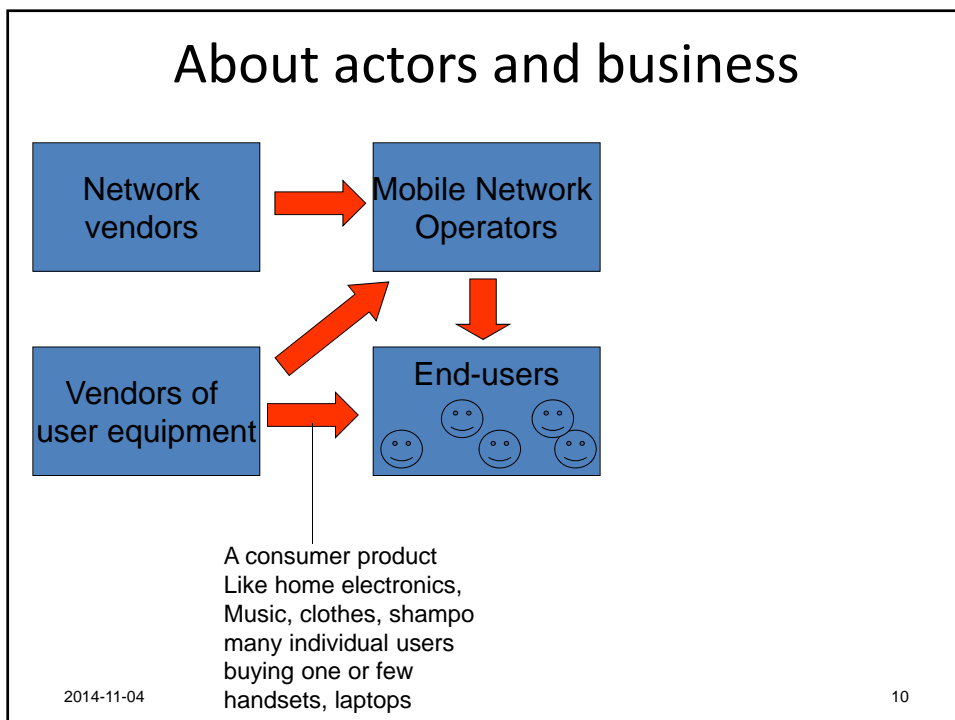
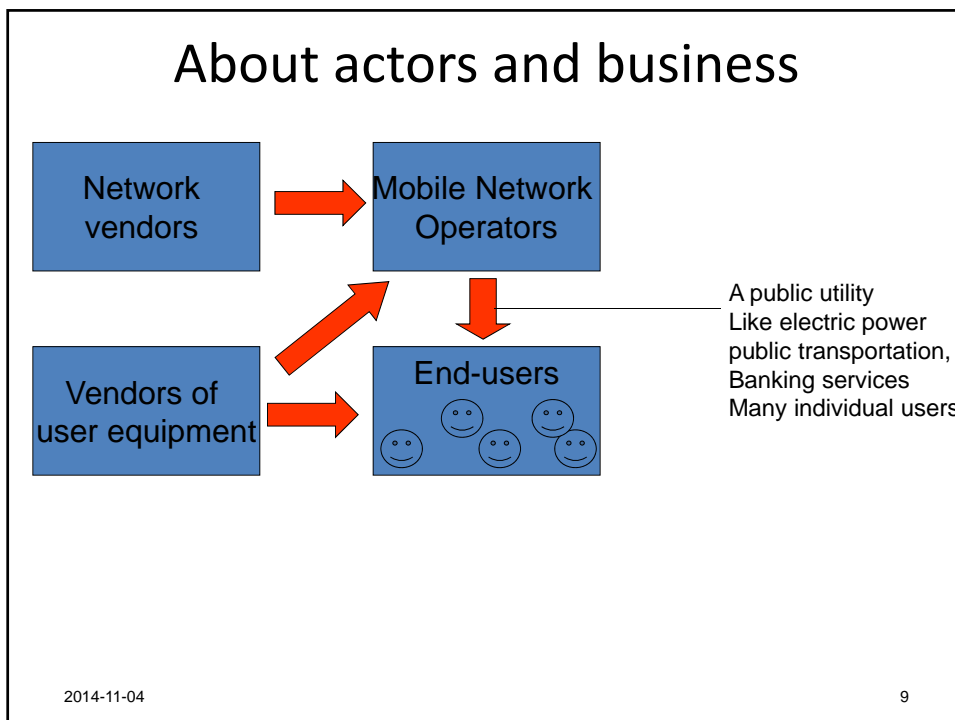
- Group A
 - Austria: Mårten
 - Greece: Kirill
 - Ireland: Maria
 - Portugal: Rachaen
- Group B
 - France: Istiak
 - Germany: Pehr
 - UK: Athanasios
- Group C
 - Estonia: Sikandar
 - Denmark: Dusan
 - Finland: Ganapathy
- Group D
 - Australia: Ahmad
 - Kenya: Jin
 - Mexico: Oscar
 - Morocco: Menatalla

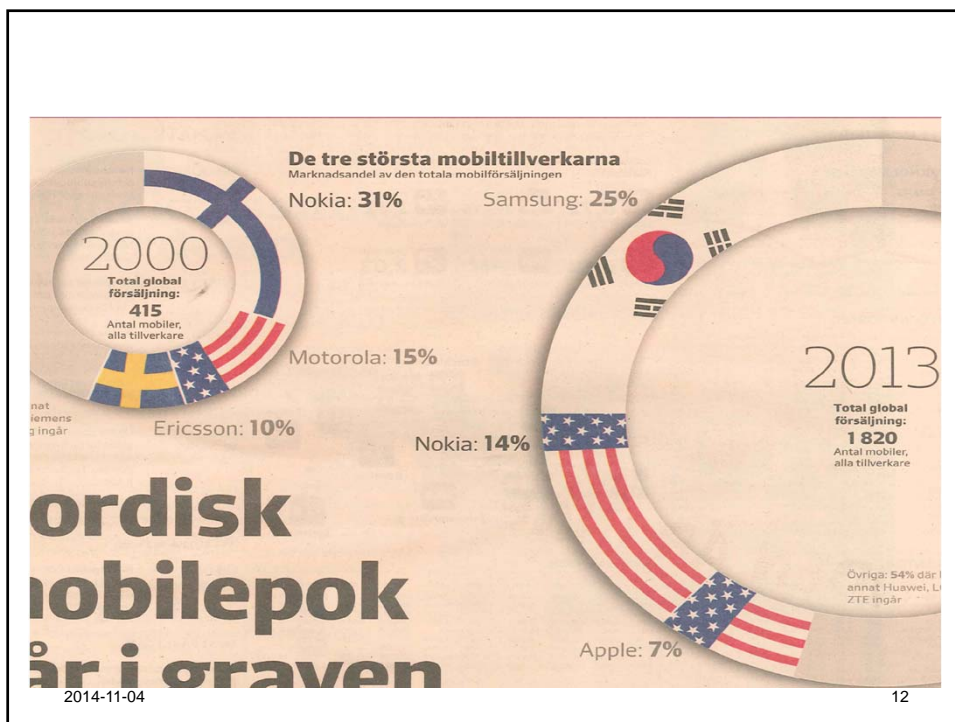
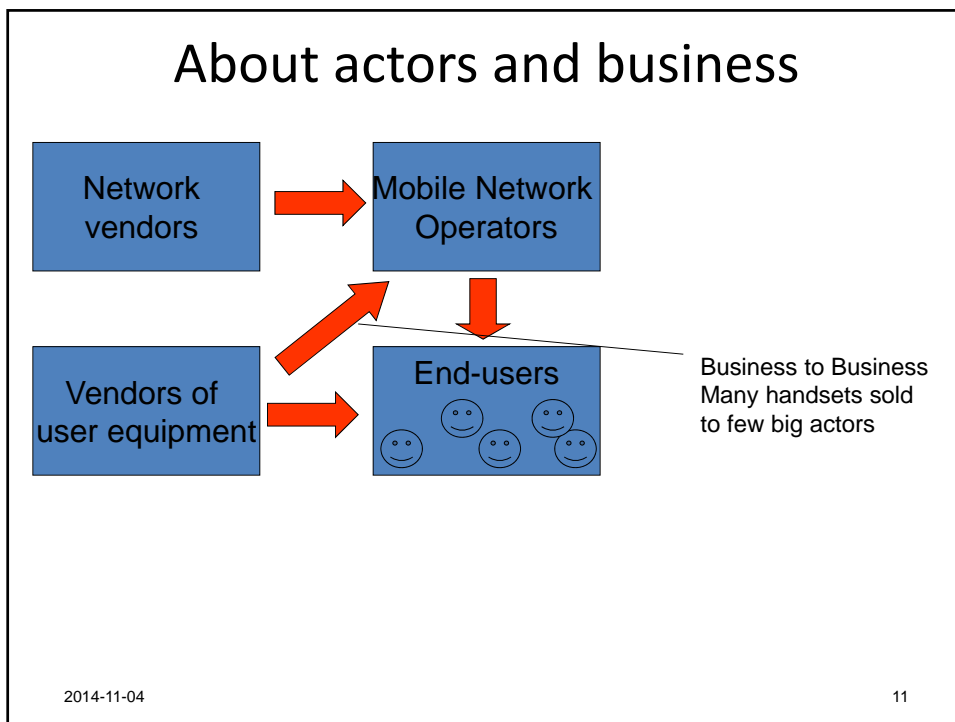
About review of the homework reports

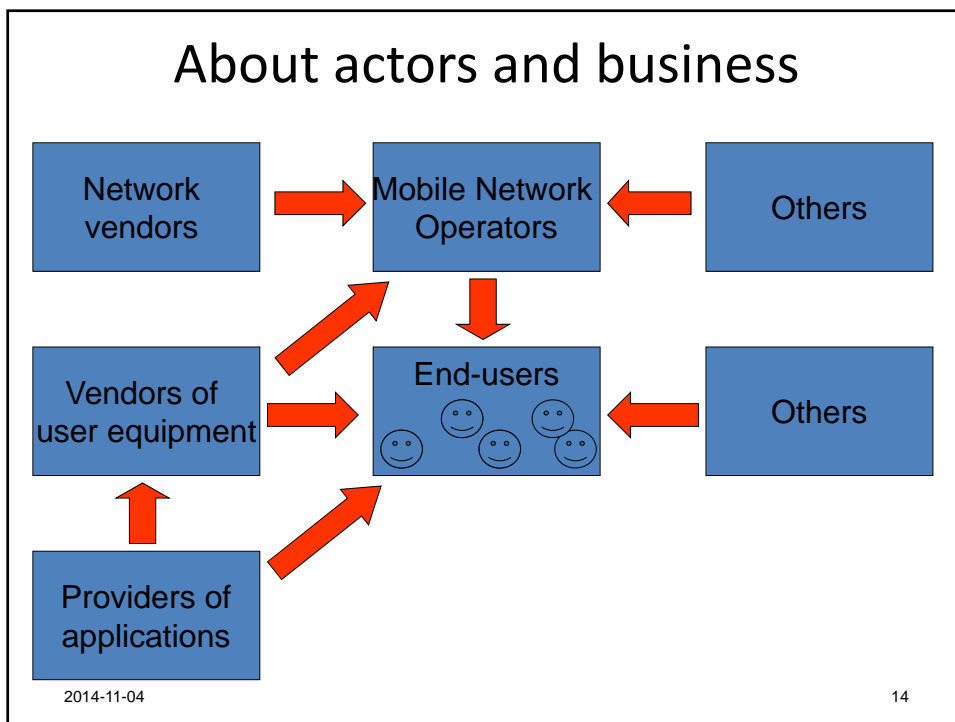
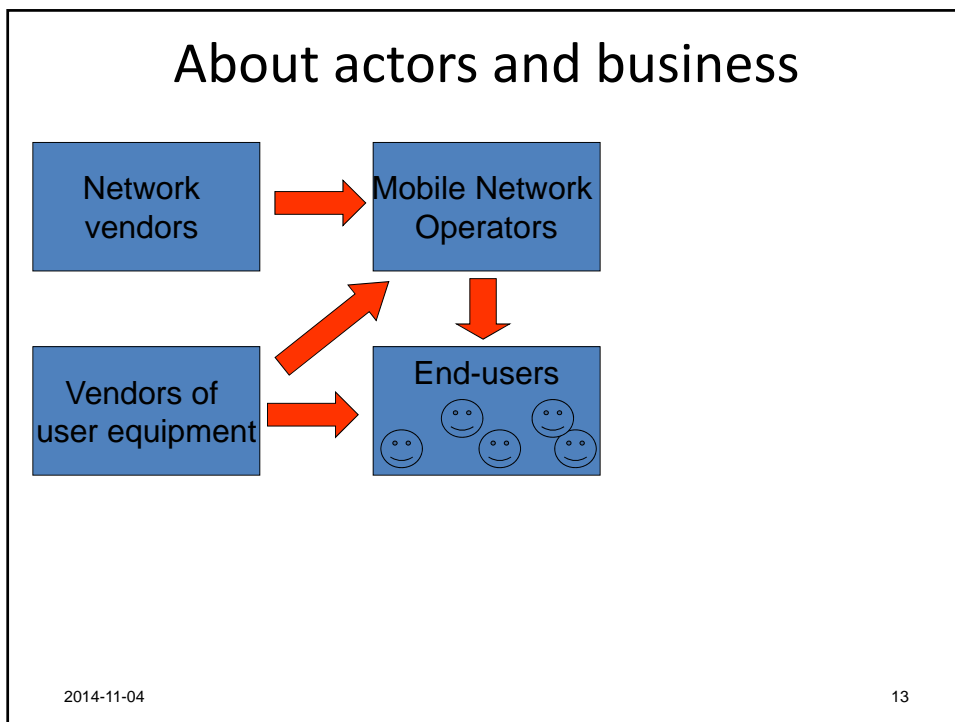
- Below is a short check list with key aspects to consider when reviewing the HW reports
 - Are the key aspects of the analysis covered?
 - Is there a relevant methodology section?
 - Are the results and analysis clearly described?
 - Are the results and analysis supported by a convincing argumentation?
 - Is the report OK when it comes to layout, presentation style and language
 - Are there sections with “cut and paste” material from webpages, reports, etc?
 - Are relevant references used?
 - Is there any self-assessment and is it relevant?











Global sales - question

- Network infrastructure: is it 1/10/100/1000 Billion € ?
- Mobile devices: ?
- Laptops, PC's:
- SW for laptops, PC's:
- Fixed and broadband telecom services:
- Mobile telecom services:

2014-11-04

15

Global sales – Students 2014

- Network infrastructure: is it 100/100/ 100
- Mobile devices: 10/500/500
- Laptops, PC's: 100/300/200
- SW for laptops, PC's:10/1000/500
- Fixed and broadband telecom services:10/10/50
- Mobile telecom services:100/100/100

2014-11-04

16

Global sales – students 2013

- Network infrastructure: 100 Billion €
- Mobile devices: 10/100/300/200
- Laptops, PC's: 50/50/250/10
- SW for laptops, PC's: 1/500/200/10
- Fixed and broadband telecom services:
- Mobile telecom services:

2014-11-04

17

Global sales – students 2012

- Network infrastructure: 100 Billion €
- Mobile devices: 20 000/1000/3000/2000
- Laptops, PC's: 1000/2000/2000/1000
- SW for laptops, PC's: 1000/10000/1000/4000
- Fixed and broadband telecom services:5000/500/ 4000
- Mobile telecom services: 5000/5000/500/400

2014-11-04

18

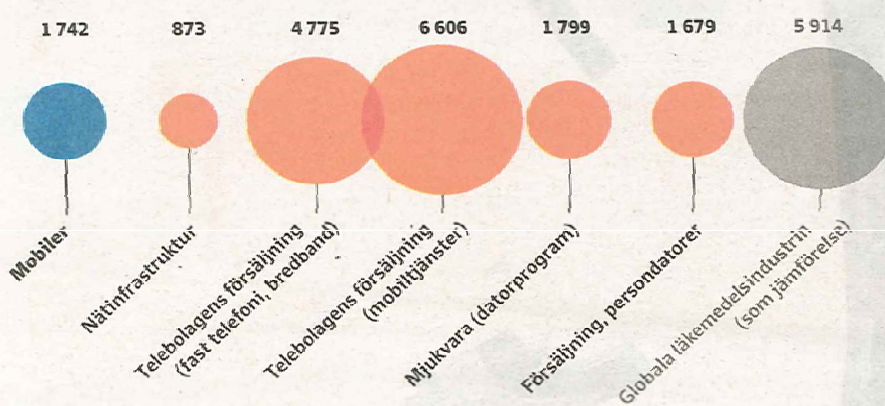
Global sales – answer

- Network infrastructure : 100 units
- Mobile devices: 200
- Laptops, PC's: 200
- SW for laptops, PC's:200
- Fixed and broadband telecom services: 500
- Mobile telecom services: 800

2014-11-04

19

Teknikmarknadernas storlek, miljarder kronor



2014-11-04

20

Exercise on actors that you can identify

Task 1: A user of a smartphone

Task 2: A user with a WLAN enabled laptop
using hot spot where you need to pay

- Find as many actors as possible
- Write name of each actor at a "post it" note
 - Real names: Ericsson, Telia, Nokia, Dell,
 - Think "here and now" in Stockholm area
- Work in groups for 10 minutes
- Then put notes on the board

2014-11-04

21

Two observations

- 1. There are totally different types of business logic within the telecom sector
 - A network business
 - A user equipment business
 - A service provisioning business
- 2. Wireless Internet access can be provided
 - By mobile operators
 - That control all (most) resources
 - By other cooperating actors
 - That contribute with different resources

2014-11-04

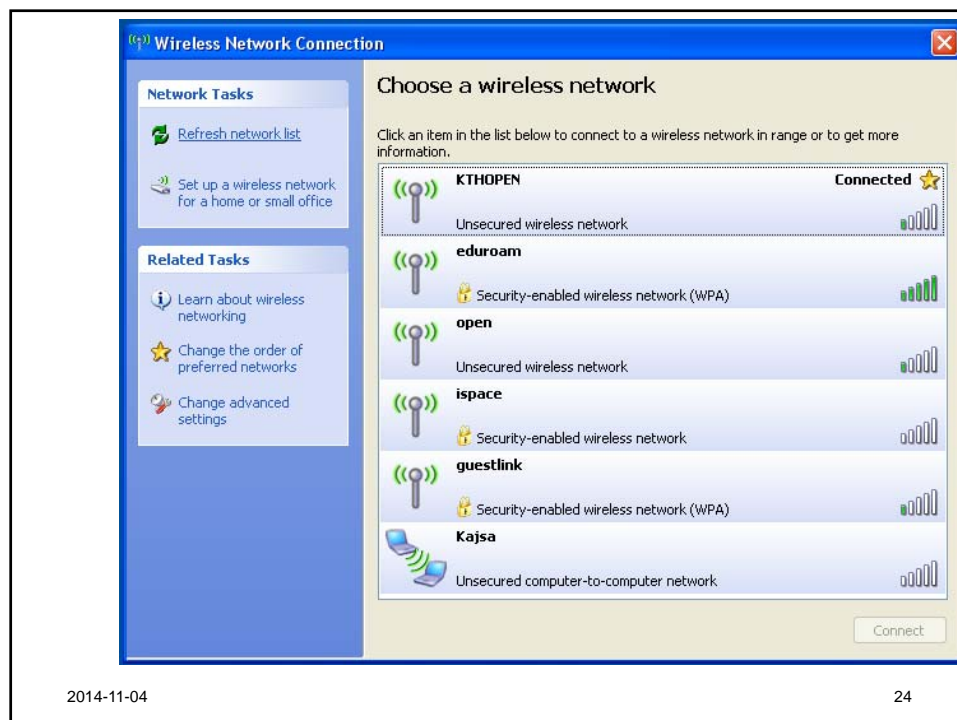
22

Two observations

- 1. There are totally different types of business logic within the telecom sector
 - A network business
 - A user equipment business
 - A service provisioning business
- 2. Wireless Internet access can be provided
 - By mobile operators
 - That control all (most) resources
 - By other cooperating actors
 - That contribute with different resources

2014-11-04

23







2014-11-04

24

Stockholm Central Station at the train to Uppsala

Choose a wireless network

Click an item in the list below to connect to a wireless network in range or to get more information.





	WLAN Zone - The Cloud Unsecured wireless network	Connected ★ 
	SJ Unsecured wireless network	Manual ★ 

2014-11-04 25

Stockholm Central Station at the train to Uppsala

Choose a wireless network

Click an item in the list below to connect to a wireless network in range or to get more information.

	WLAN Zone - The Cloud Unsecured wireless network	Connected ★ 
	SJ Unsecured wireless network	Manual ★ 

2014-11-04 26

Stockholm Central Station at the train to Uppsala

Internet ombord TILL STARTSIDAN | KÖP KOD | OM INTERNET OMBORD | SNABBLÄNK TILL SJ.SE

Välkommen till Internet ombord
Här hittar du information om hur du kan koppla upp dig på tåget

Surfa på internet
Att surfa utanför SJ internet ombord är en betaltjänst, logga in här.
 Jag accepterar användarvillkoren. Internet ombord ingår i 1 klass.
 Välj typ av kod:
 Din kod:

WLAN Zone - The Cloud Connected ★
 Unsecured wireless network

SJ Manual ★
 Unsecured wireless network

2014-11-04 27

Stockholm Central Station at the train to Uppsala

Choose a wireless network

Click an item in the list below to connect to a wireless network in range or to get more information.

WLAN Zone - The Cloud Connected ★
 Unsecured wireless network

SJ Manual ★
 Unsecured wireless network

2014-11-04 28

Stockholm Central Station at the train to Uppsala

Betala med kontokort ▼

<input checked="" type="radio"/> Internet ombord 30 minuter	Pris:	49 SEK
<input type="radio"/> Internet ombord 60 minuter	Pris:	69 SEK
<input type="radio"/> Internet ombord 120 minuter	Pris:	89 SEK
<input type="radio"/> Internet ombord hela resan	Pris:	109 SEK





SJ Prio:

2014-11-04 29

Stockholm Central Station at the train to Uppsala

Choose a wireless network

Click an item in the list below to connect to a wireless network in range or to get more information.

	WLAN Zone - The Cloud	Connected ★
	Unsecured wireless network	
	SJ	Manual ★
	Unsecured wireless network	

2014-11-04 30

Stockholm Central Station at the train to Uppsala

the cloud

Arlanda Express - Stockholm C

Anslut mig

Användarnamn:

Lösenord:

Kom ihåg mig

Genom att ansluta till tjänsten bekräftar du att du har tagit del av och godkänner användarvillkoren

Köp access tid nu

Välj ditt accesspaket till Internet här

Tjänsteleverantörer

Konto hos en av våra tjänsteleverantörer?

- Telenor
- iPass
- Skype
- Sprint PCS
- Trustive
- Echovox SMS (Nordics)
- AT&T
- KeyConnect

Fri Internet access till

Säkerhetspolicy | Användarvillkor

English | Svenska | Deutsch | Dansk | Finnish | Norsk

2014-11-04 31

Stockholm Central Station at the train to Uppsala

the cloud

Arlanda Express - Stockholm C

Anslut mig

Användarnamn:

Lösenord:

Kom ihåg mig

Genom att ansluta till tjänsten bekräftar du att du har tagit del av och godkänner användarvillkoren

Köp access tid nu

Välj ditt accesspaket till Internet här

Tjänsteleverantörer

Konto hos en av våra tjänsteleverantörer?

- Telenor
- iPass
- Skype
- Sprint PCS
- Trustive
- Echovox SMS (Nordics)
- AT&T
- KeyConnect

Fri Internet

Säkerhetspolicy | Användarvillkor

English | Svenska | Deutsch

2014-11-04 32

Stockholm Central Station at the train to Uppsala

Welcome to The Cloud Networks

<<Back You are securely connected to this site.

Cloud pay-as-you-go

Quick and easy bite sized access



Vouchers are valid from first login for the time purchased. Vouchers expire irrespective of use after time period expires.

- 30 minut access (30 Minutes) - SEK 40.00
- 60 minut access (60 Minutes) - SEK 60.00
- 180 minut access (180 Minutes) - SEK 90.00
- 1 dag access (24 Hours) - SEK 120.00
- 7 dagar access (7 Days) - SEK 240.00
- 30 dagar access (30 Days) - SEK 295.00

Enter your personal and payment details

Getting started

1. Select a Wi-Fi access package
2. Enter your personal and credit/debit card details (please note we do not accept Maestro)



3. Accept the terms and conditions
4. Submit

We'll then create a username and password and you'll be able to get online straightaway.

2014-11-04
33

Stockholm Central Station at the train to Uppsala

- 30 minut access (30 Minutes) - SEK 40.00
- 60 minut access (60 Minutes) - SEK 60.00
- 180 minut access (180 Minutes) - SEK 90.00
- 1 dag access (24 Hours) - SEK 120.00
- 7 dagar access (7 Days) - SEK 240.00
- 30 dagar access (30 Days) - SEK 295.00

2014-11-04
34

Home work 1 deadlines 2014

Activity	Home work 1
Home work is assigned to each student	13-11-04 ; 12.00
Draft report sent to teacher & reviewers filename: "country"_HW1_1.doc	13-11-07; 18.00
Review comments sent to teacher and authors filename: "country"_HW1review_by"name"	13-11-10; 10:59
Review session and discussions in review groups (room 208 available, no teacher present)	13-11-10; 13:00-15:00
Send slides for oral presentation to teacher filename: "country"_HW1.ppt	13-11-17; 07:59
Oral presentation of HW1 Each review group will present together	13-11-17 ; 13:00-15:00 (16:00) Max 5 min per country
Send final report version to teacher filename: "country"_HW1_2.doc	13-11-21; 11:59
Feedback and HW grading send to student	13-11-28; 12.00 latest

Home work 1 review groups 2014

- Group A
 - Austria: Mårten
 - Greece: Kirill
 - Ireland: Maria
 - Portugal: Rachaen
- Group B
 - France: Istiak
 - Germany: Pehr
 - UK: Athanasios
- Group C
 - Estonia: Sikandar
 - Denmark: Dusan
 - Finland: Ganapathy
- Group D
 - Australia: Ahmad
 - Kenya: Jin
 - Mexico: Oscar
 - Morocco: Menatalla

About review of the homework reports

- Below is a short check list with key aspects to consider when reviewing the HW reports
 - Are the key aspects of the analysis covered?
 - Is there a relevant methodology section?
 - Are the results and analysis clearly described?
 - Are the results and analysis supported by a convincing argumentation?
 - Is the report OK when it comes to layout, presentation style and language
 - Are there sections with “cut and paste” material from webpages, reports, etc?
 - Are relevant references used?
 - Is there any self-assessment and is it relevant?

2014-11-04

37