



Codec C90



Codec C60



Codec C40



Codec C20



Quick Set C20/C20 Plus



SX20 Quick Set



**TC 5.1**

Use with TRC5



# User Guide

**Cisco TelePresence System Profile Series**  
**Cisco TelePresence System Codec C-Series**  
**Cisco Telepresence System Quick Set C20/C20 Plus**  
**Cisco Telepresence SX20 Quick Set**



Profile 65" Dual



Profile 65"



Profile 52" Dual



Profile 52"



Profile 42"



# What's in this guide?

The top menu bar and the entries in the Table of Contents are all hyperlinks. Just click on them to go to the topic. We recommend that you visit the Cisco web site regularly for updated versions of this guide. Go to: <http://www.cisco.com>

## Getting started

- Waking up the system ..... 4
- Overview of the remote control..... 5
- Navigating in the menus ..... 6
- Entering text in text fields ..... 7
  - Text entry essentials ..... 7
  - Invoking the virtual keyboard ..... 7
  - Virtual keyboard details ..... 7
- Screen layout..... 8
  - Tip: Adding a wallpaper to your screen ..... 8
  - Layout control ..... 8
- Camera presets ..... 9
  - Where to find camera presets ..... 9
  - Using the presets ..... 9
  - Adding a new camera preset..... 10
  - Editing an existing camera preset..... 12
- Camera settings ..... 14
  - Adjusting the exposure of the camera ..... 14
  - Adjusting the whitebalance of the camera ..... 14
- Main source ..... 15
  - Main source settings..... 15
- Call settings—an overview ..... 15
  - The call settings options ..... 15
- Call settings—auto answer options ..... 16
  - The options in detail..... 16
- Call settings—default call rate ..... 16
  - The default call rate options ..... 16
- Language settings ..... 17
  - Language settings options ..... 17
- About the setting of date and time ..... 17
  - Date and time settings overview ..... 17
  - Setting date and time yourself ..... 18
    - Deactivated NTP server..... 18
    - Setting date and time automatically ..... 18
      - Activated NTP server..... 18

- Selecting ring tone ..... 19
  - Ring tone selection ..... 19
- Setting ring tone volume ..... 19
  - Ring tone volume settings ..... 19
- Setting key tone to on or off ..... 20
  - Key tone setting ..... 20
- Setting wallpaper on your screen..... 20
  - Wallpaper setting options ..... 20
- Inserting your own wallpaper ..... 21
- System information..... 21
- Entering the Advanced configuration ..... 22
  - Advanced configuration entering..... 22
- Restarting the system..... 22
  - Restarting ..... 22

## Making calls

- Placing calls by specifying the name, number or address ..... 24
- Placing calls using the phone book ..... 25
- Placing calls by means of the Recent calls list ..... 26
- When someone is calling you..... 27
- Terminating an ongoing call..... 27
  - Management systems booking list ..... 27
- Calling more than one (optional) ..... 28
  - Setting up a list of whom to call before calling them .... 28
  - Calling participants one by one ..... 28
  - Terminating a video conference ..... 28
- Using Multiway™ to call more than one ..... 29
  - Using Multiway, Case 1 ..... 29
  - Using Multiway, Case 2 ..... 29
- Which codec does my system have?..... 30

## Phone book usage

- Basic phone book features..... 32
  - Navigating in the phone book ..... 32
  - Calling an entry in the phone book..... 32
  - Opening the phone book ..... 32
- Searching in the phone book ..... 33
  - How to search for an entry ..... 33
- Adding new contacts to the phone book ..... 34
  - Adding an entry from recent calls or the phone book ... 34
  - Adding an entry manually to My contacts ..... 34
- Editing existing entries in the phone book ..... 35
  - Editing entries in the phone book ..... 35

## In-call features

- Sharing contents ..... 37
  - Dual video stream ..... 37
  - Sharing PC contents ..... 37
  - If the shared contents fail to show..... 37
  - Selecting the source..... 37
- Controlling the cameras ..... 38
  - Controlling your own camera (near side)..... 38
  - Controlling far end camera (far side) ..... 38

## Scheduled meetings

- Joining a meeting ..... 40
  - To join a meeting or not ..... 40
- Learning more about a meeting ..... 40
  - Viewing meeting details..... 40
- Displaying a list of upcoming meetings ..... 41
  - To display a meetings list you can navigate within .... 41
- Meeting details of any upcoming meeting ..... 41
  - Viewing details of any meeting ..... 41
- Joining when already in a call..... 42
  - Joining the meeting ..... 42
- Parallel meetings (concurrency) ..... 42
  - Selecting which meeting to join..... 42
- Extending a scheduled meeting ..... 43
  - Extending the meeting..... 43

## Advanced settings

- About the Administrator settings..... 45
  - Entering the Administrator settings..... 45
  - Administrator settings & password ..... 45
- Assigning softbutton functions..... 46
  - Assigning a function to a softbutton ..... 46
- Creating softbutton for Main source selection ..... 47
  - Assigning Main source selection softbutton..... 47
- Creating softbutton for Camera Preset ..... 47
  - Assigning Camera preset softbutton ..... 47
- Softbutton—Speed dials ..... 48
  - Assigning Camera preset softbutton ..... 48
- Customized softbuttons—how they appear ..... 48
  - Example of customized softbuttons ..... 48
- Softbutton—Clearing softbuttons..... 49



# Chapter 1

## Getting started

## Waking up the system

To make a call you need to wake up the system from standby. However, if someone calls you, the system will wake up by itself.

- To wake up the system just pick up the TRC5 remote control or press any key. You may have to point the remote control towards the system to make sure it discovers you.



- The system will now display the wallpaper.
- The dial-in address or dial-in number of your system is displayed in the upper left corner. If you have questions about the dial-in address or number, contact your system administrator.
- The screen will also indicate if there are any calls you have missed.

After wake-up, the screen will typically look like this:

The dial-in address or dial-in number of your system is displayed in the upper left corner.

Date and time of day.



Softkeys (described on the following pages).

If the system fails to respond to the remote control or to incoming calls, make sure that:

- The system is connected to line voltage.
- The remote control has working batteries.
- The internal cables, such as the monitor cable and/or the camera cables are properly connected, see the installation sheet for details, if needed.



# Overview of the remote control

Microphone On/Off.

Adjust loudspeaker volume.

Use the **Arrow** keys to navigate in the menus and the center **✓** key to confirm your choice or selection.  
When no menu is open, **Arrow** keys can be used to move the camera.

Use this key to display the **Main menu** on the screen.

Use this key to display the **Phone book** (your contacts) on the screen.

Place a call.

Use this key to remove characters in a text field.

Switch to show PC screen on the system. Press again to go back to the main camera.  
Open the **Presentation menu** to select other sources. Press and hold

Zoom the camera.

These keys correspond to the five context sensitive softkeys along the bottom of the screen.



Use this key to change the layout on the screen.

Use this key to end an ongoing call. Outside a call, press and hold to enter the standby mode.

Use the keypad to enter letters and numbers, as with a mobile phone. Press a key repeatedly to access the characters displayed on each key.  
  
Press and hold the **#** key to switch between touch tone mode (press and hold), lower case characters and numbers.

Use this key to enter touch tone mode (DTMF) in a call. Press the **✓** key when done.  
When entering text this key is used to toggle between upper and lower case letters.  
Press and hold Press and hold to change between characters and numerics.

**Waking up the system**  
Grab the remote control and make sure your hand touches the rubber line sensors located on both sides of the remote control, or just touch any key on the remote control.

## Navigating in the menus

Use the remote control to operate your video system. A few basic navigation principles are all you need to know to get started.

- Press the **Home** key (🏠) to show the *Home* menu or wake up the system by lifting the remote control.
- The **Arrow** keys in the center of the upper part of the remote control are used to navigate in the menus.
- When the system shows the *Home* menu only (see the Fig. below), pressing **Home** key (🏠) will hide the menu. To bring it back, press the **Home** key (🏠) again.

- In an input field, pressing **C** will delete characters/numbers to the left of the cursor position.
- When the system shows the *Home* menu only (see the Fig. below), pressing **Home** key (🏠) will hide the menu. To bring it back, press the **Home** key (🏠) again.
- In an input field, pressing **C** will delete characters/numbers to the left of the cursor position.

Press the 🏠 key to display the *Home* menu on the screen.

The element currently selected is indicated by an orange rectangle. Use the ▲ and ▼ **Arrow** keys to navigate up and down in a menu.

The little triangle indicates that a submenu is available.

Example showing a submenu displayed by pressing the right arrow key.

The **HOME** menu is shown on the left. Pressing the right arrow key on the remote control (shown in the middle) opens the **CALL** submenu on the right. The submenu includes options like 'Enter contact...', 'Call', 'Phone book', 'Recent calls', and 'Add another participant'.

Use the **Home** key (🏠) to exit all menus and return to showing the *Home* menu only.

Use the ◀ **Arrow** key to collapse the menu expansion (to go back one level).

Context sensitive softbuttons corresponding to the function keys of the remote control.

Softbuttons not used in a given context are shown ghosted (gray).



## Entering text in text fields

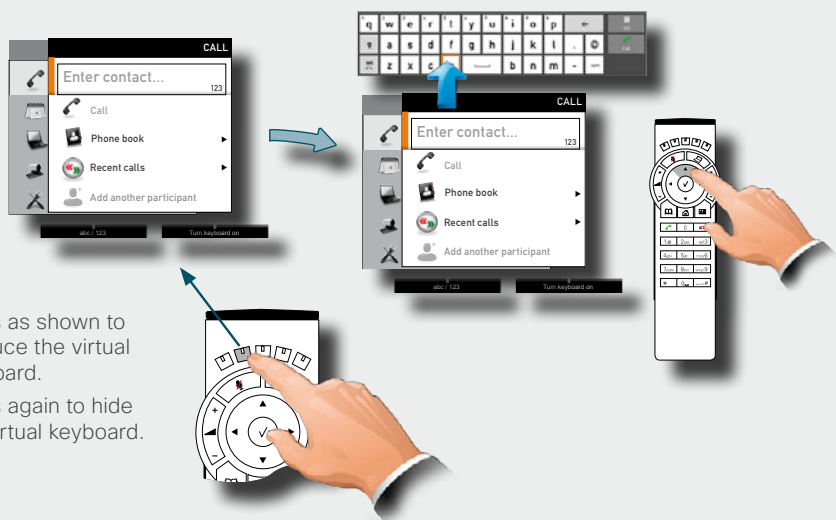
Some menu fields expect text information to be entered. This is used to enter the name, number or address of the person you want to call as well as for such things as to search in the phone book and to maintain your list of contacts (the *My contacts*).

### Text entry essentials

- If you press a number key when you are not in a call, the *Call* menu will be shown.
- The system will automatically switch to text mode (*abc*) inside entry fields expecting text entries. The easiest and most convenient way of entering letters is by invoking the on-screen virtual keyboard. Do as shown below to invoke the keyboard.
- You may also use the keypad in the same manner as when composing text messages on a mobile phone, but the virtual keypad is by far more convenient and it is also faster to use.

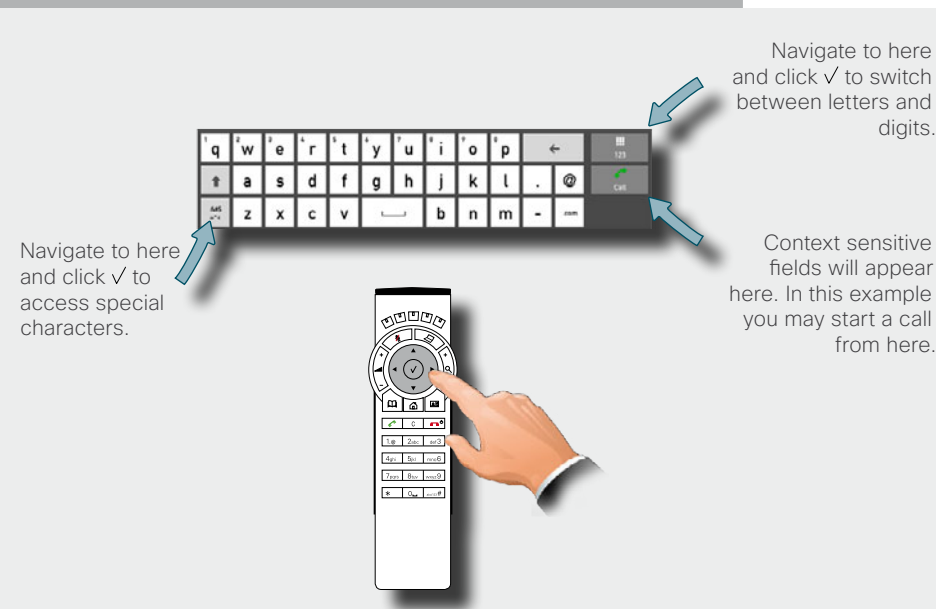
- Press **Function** key number two from the left to invoke the virtual keyboard if it does not appear by itself.
- Use the **▲ Arrow** key to move the cursor inside the keyboard.
- Use all four **Arrow** keys to move about the keyboard.
- When the required key is reached, press **✓** to have the letter or digit inserted in the entry field.
- If you navigate to the alpha/numeric selection field, pressing **✓** will take you to numeric from alpha and vice versa. Navigate and select inside here to the extent needed. The same principle applies if you need to enter special characters.
- Once entered, press the **Function** key to hide the keyboard. This will put your entry into effect.

### Invoking the virtual keyboard



Press as shown to produce the virtual keyboard.  
Press again to hide the virtual keyboard.

### Virtual keyboard details



Navigate to here and click ✓ to access special characters.

Navigate to here and click ✓ to switch between letters and digits.

Context sensitive fields will appear here. In this example you may start a call from here.

# Screen layout

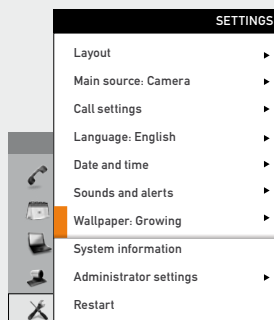
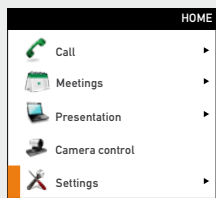
The layout of the screen can be changed as shown to the right.

To show the display options screen, press the **Layout** (📺) key. Alternatively, you may get to it through *Settings > Layout*.

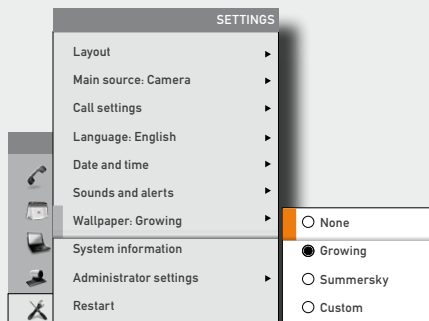
- Use the **Arrow** keys to move between the alternatives and use ✓ to select the alternative you want to use.
- You may—or may not—include selfview (to show the outgoing video signal from your own system). This will show you what others will see from your system.

## Tip: Adding a wallpaper to your screen

In the *Home* menu, navigate down to *Settings* and press the ✓ key.

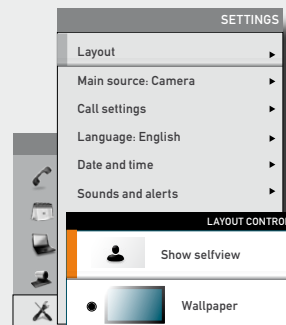


In the *Settings* submenu navigate down to *Wallpaper*. Press ✓ again.



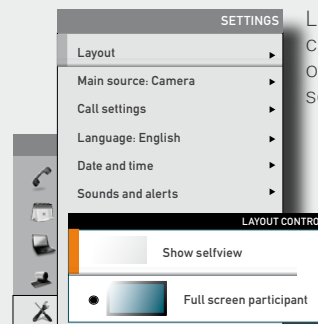
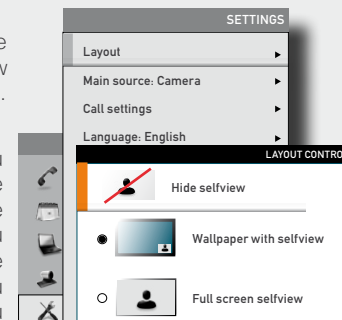
Select between the options available and press the ✓ key to leave the menu putting your choice into effect. See also ► page 20 for more on this.

## Layout control



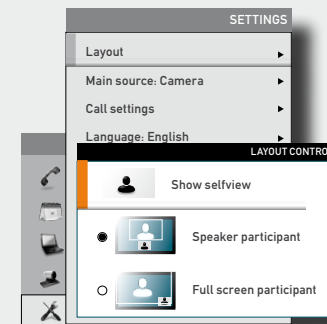
Layout control outside a call is limited to the choice between showing selfview and showing a wallpaper...

However, if you already have activated the selfview, the menu will give you these options when you enter the menu again.

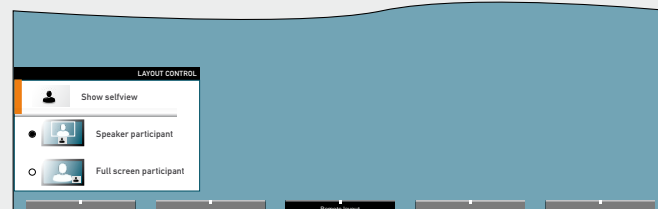


Layout control when in a call provides the choice of showing selfview or full screen participant...

However, if you already have activated the selfview, you may select where the selfview should appear in the image when you enter the menu again.



Change remote layout (the outgoing video) when hosting MultiSite Conference...



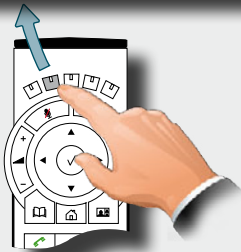
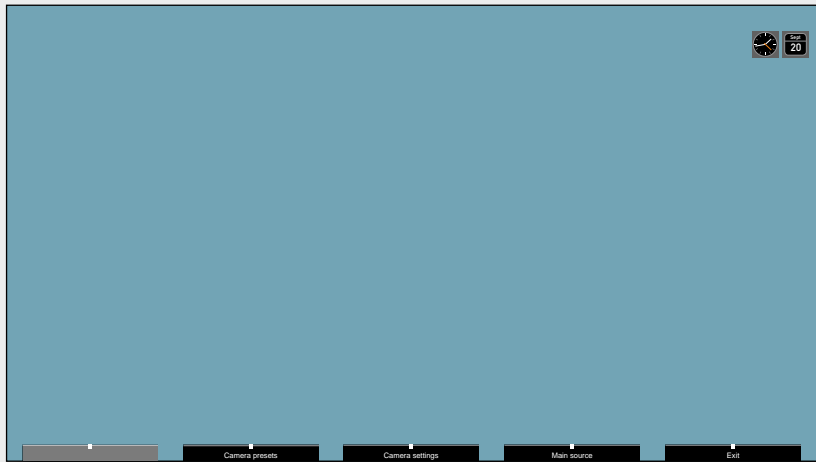
Pressing **Layout** (📺) will produce a softkey letting you choose the layout of the outgoing video. Select among all defined layouts available. Note that you have no influence on the actual layout on the remote system.



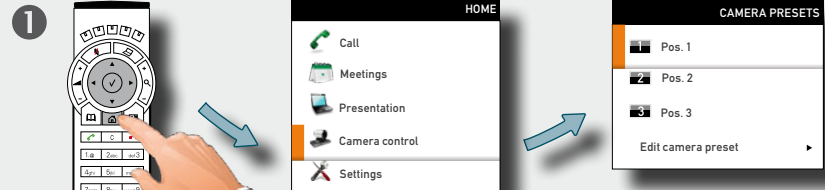
# Camera presets

You may create predefined settings of where the camera points and the zoom. This is referred to as *camera presets*. See the next page for more.

## Where to find camera presets

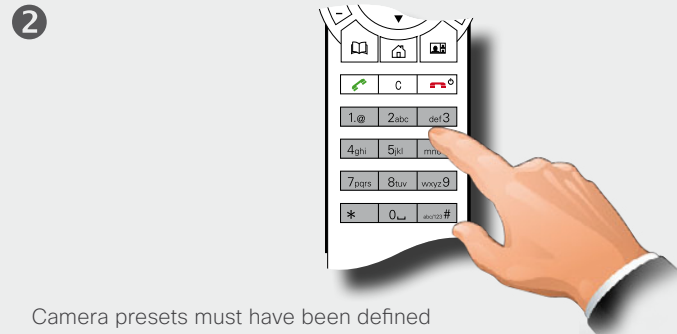


## Using the presets



Camera presets must have been defined before you do this.

Press the key on the remote control to display the *Home* menu and select *Camera control*. Use the **▲** and **▼ Arrow** keys to navigate in the menu. Use **✓** to select a preset. The camera will now move accordingly. Note that this feature may be used any time.

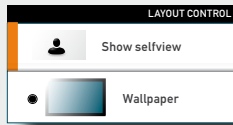


Camera presets must have been defined before you do this.

Press the key on the remote control to display the *Home* menu and select *Camera control*. Use the **0~9** keys to select a preset. The camera will now move accordingly. Note that this feature may be used any time.

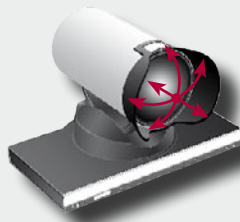
Adding a new camera preset (I)

1



Outside a call, press the **Layout** key and select *Show selfview* followed by the **✓** key, if needed. You will now see the outgoing video from your system.

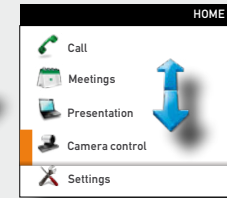
2



Adjust pan, tilt and zoom, as required.



3



Press the **Home** key to display the *Main menu* and navigate to *Camera control*. Press the **✓** key.

4

This will display the softkeys along the bottom of the screen, as shown.



Display the *Camera presets* menu by pressing the **Function** key corresponding to the **Camera presets** softkey on the remote control to open the menu.

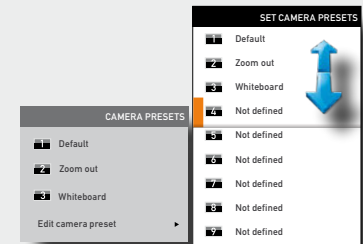


5



In the *Camera presets* menu navigate to *Edit camera preset* and press the **✓** key. Any presets already existing are listed here.

6

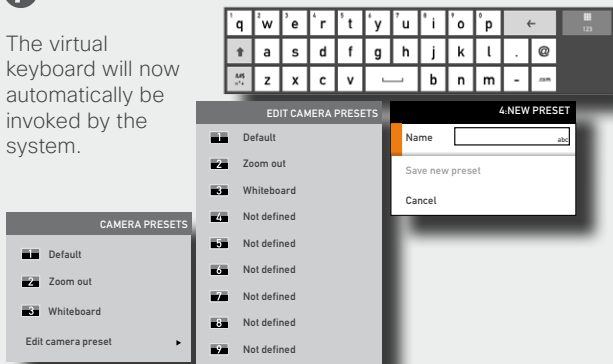


Navigate to the undefined preset you would like to define. When you have located it, press the **✓** key.

Adding a new camera preset (II)

7

The virtual keyboard will now automatically be invoked by the system.



8



Use the **▲ Arrow** key as shown to move the cursor up into the virtual keyboard (the cursor is indicated by an orange square).



9



Give the new preset a descriptive name.

Use the **Arrow** keys to move about the keyboard and the **✓** key to select a character.

Access special characters and numerics by means of the corresponding keys.



10



Press the **▼ Arrow** key a sufficient number of times to move the cursor down to *Save new preset*, as shown.

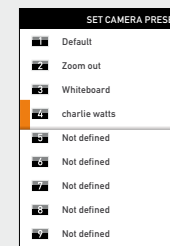


11

Press the **✓** key to put your changes into effect. This will be confirmed by the system.



12



To leave the menu, press the **Home** key.

Alternatively, you may define another preset or redefine existing (see the following page for more).



Editing an existing camera preset (I)

1



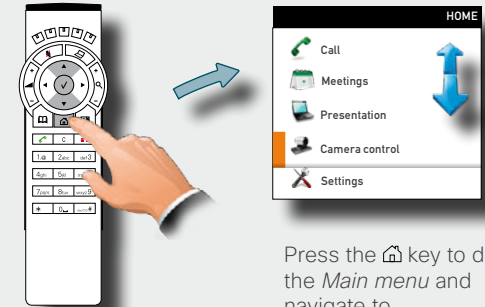
Outside a call, press the **Layout** key and select *Show selfview* followed by the **✓** key, if needed. You will now see the outgoing video from your system.

2



Adjust pan, tilt and zoom, as required.

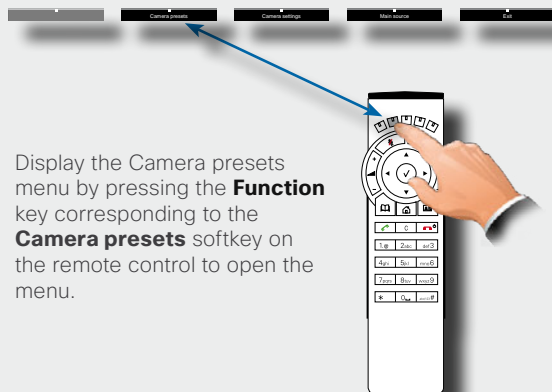
3



Press the **Home** key to display the *Main menu* and navigate to *Camera control*. Press the **✓** key.

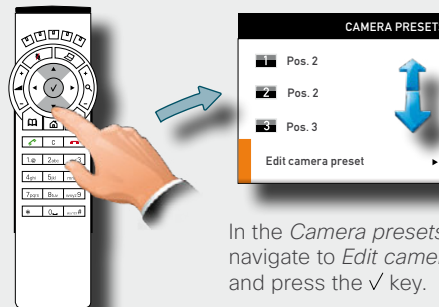
4

This will display the softkeys along the bottom of the screen, as shown.



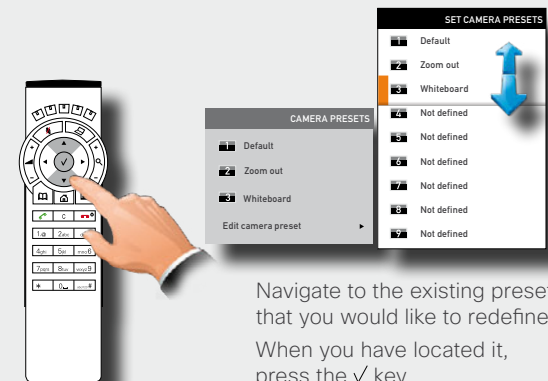
Display the *Camera presets* menu by pressing the **Function** key corresponding to the **Camera presets** softkey on the remote control to open the menu.

5



In the *Camera presets* menu navigate to *Edit camera preset* and press the **✓** key. Any presets already existing are listed here.

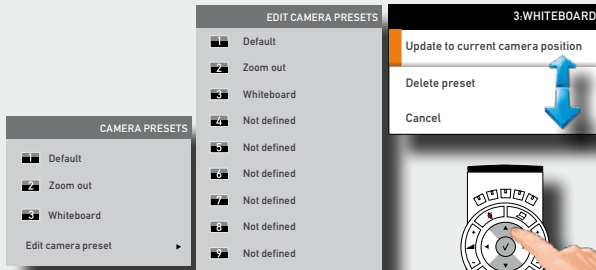
6



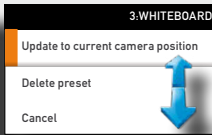
Navigate to the existing preset that you would like to redefine. When you have located it, press the **✓** key.

Editing an existing camera preset (II)

7



8



Press the ✓ key to put your changes into effect. This will be confirmed by the system.



Navigate to:

- *Update to current camera position* to redefine the preset
- *Delete preset* to remove it from the list
- *Cancel* to prepare to leave the menu undoing any updates.

# Camera settings

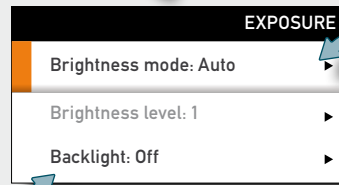
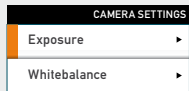
Camera settings let you adjust the exposure and whitebalance.

Do as follows:

1. Press the key on the remote control to display the *Layout* menu. Select *Selfview* to be shown as required.

2. Press the key to display the *Home* menu and select *Camera control*.
3. This will cause softbuttons to appear. Press the **Function** key corresponding to *Camera settings* (**Function** key number 2 from the left).
4. Follow the procedures outlined below.

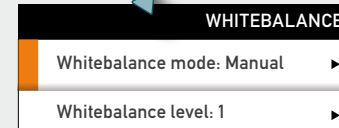
## Adjusting the exposure of the camera



If you change the *Brightness mode* to *Manual*, the *Brightness level* becomes possible for you to set. Since *Auto* has been chosen here, the actual level is shown ghosted.

Backlight compensates for any backlight shining on the camera from behind you. Such light conditions will tend to make you appear darker than needed.

## Adjusting the whitebalance of the camera



Since the whitebalance has been set to *Manual* in this case, you will have access to setting the whitebalance in the usual manner. Use *Automatic* if that is more convenient.



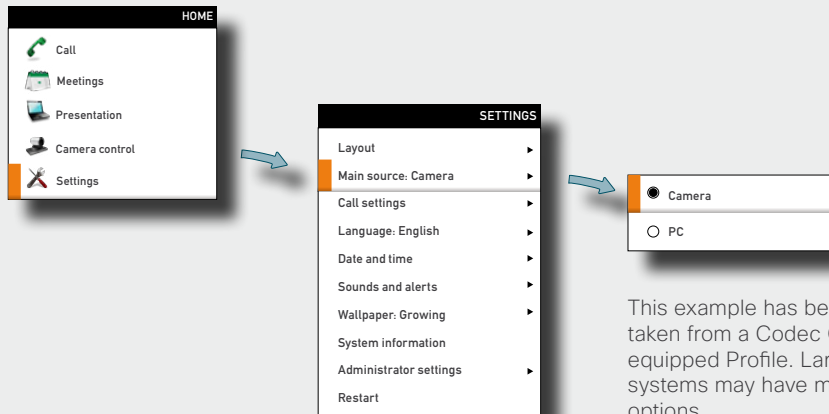
## Main source

You may choose what to use as the main input source. This will typically be the camera, a secondary camera (if applicable), the PC input or other sources such as a DVD player.

Do as follows:

1. In the menu select *Settings* > *Main source* and expand the submenu.
2. Use the **Arrow** keys to move between the alternatives and use **✓** to select the alternative you want to use.
3. Collapse the menu using the **◀ Arrow** key.

### Main source settings



This example has been taken from a Codec C20 equipped Profile. Larger systems may have more options.

More on Profile systems and their codecs can be found on [page 30](#).

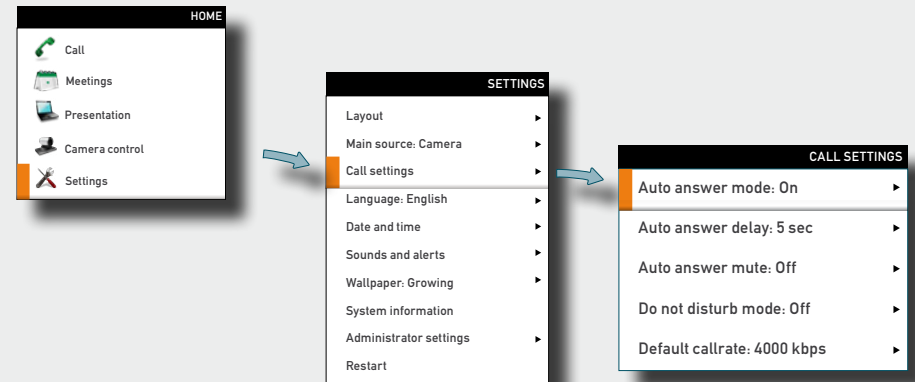
## Call settings—an overview

Use the *Call settings* menu to set the default bit rate and how the system shall answer incoming calls. Answering can be set to automatic or to manual. More on this can be found on the next page.

Do as follows:

1. In the menu select *Settings* > *Call settings* and expand the submenu.
2. Use the **Arrow** keys to move between the alternatives and use **✓** to select the alternative you want to use.
3. Collapse the menu using the **◀ Arrow** key.

### The call settings options



## Call settings—auto answer options

You may set up your system to answer automatically whenever someone calls you. If you choose to do so, you may also specify how long time it shall take before your system connects you.

For privacy reasons you may want your microphone to be muted (turned off) when the system answers automatically. Alternatively, you may set the system to *Do not disturb*.

### The options in detail

**CALL SETTINGS**

- Auto answer mode: On  On  Off
- Auto answer delay: 5 sec
- Auto answer mute: Off
- Do not disturb mode: Off
- Default callrate: 4000 kbps

Set to *On* to have your system answer incoming calls automatically and *Off* to answer them manually.

**CALL SETTINGS**

- Auto answer mode: On
- Auto answer delay: 5 sec
- Auto answer mute: Off
- Do not disturb mode: Off
- Default callrate: 4000 kbps

Use the ◀ and ▶ **Arrow** keys to alter how long time it shall take before your system connects you. Interval is 0–50 seconds.

**CALL SETTINGS**

- Auto answer mode: On
- Auto answer delay: 5 sec
- Auto answer mute: Off  On  Off
- Do not disturb mode: Off
- Default callrate: 4000 kbps

For privacy you may set the microphone to be muted upon autoanswer. You will then have to activate the microphone yourself (press ).

**CALL SETTINGS**

- Auto answer mode: On
- Auto answer delay: 5 sec
- Auto answer mute: Off
- Do not disturb mode: Off  On  Off
- Default callrate: 4000 kbps

To further enhance your privacy you may set the system to *Do not disturb*. Your system will then not respond to incoming calls. As soon as you disable the *Do not disturb* any call attempts made while the feature was enabled will be listed as missed calls.

## Call settings—default call rate

The *Call settings* menu lets you set the default call rate expressed as default number of kilobits per second.

You may want to consult your system administrator to discuss the best setting in your environment.

### The default call rate options

**SETTINGS**

- Layout
- Main source: Camera
- Call settings
- Language: English

**CALL SETTINGS**

- Auto answer mode: On
- Auto answer delay: 5 sec
- Auto answer mute: Off
- Do not disturb mode: Off
- Default callrate: 4000 kbps

Options: 128, 256, 384, 512, 768, 1152, 1472, 1920, 2560, 3072, 4000

Scroll with the ▲ and ▼ **Arrow** keys to access settings not shown.

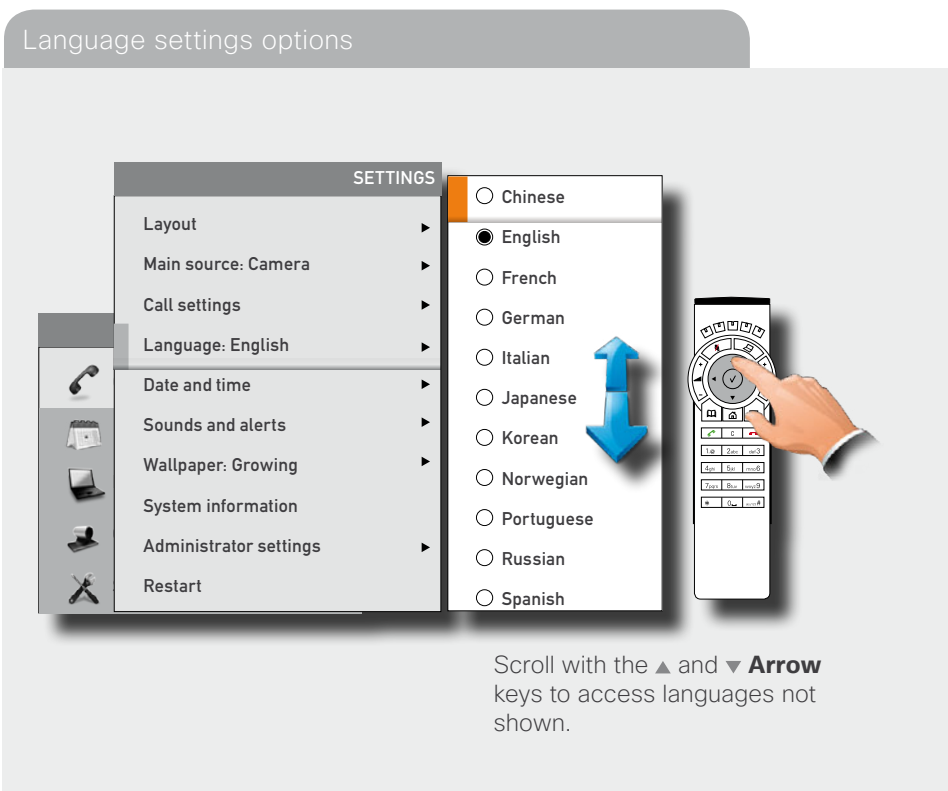
Options are 128, 256, 384, 512, 768 (initial default), 1152, 1472, 1920, 2560, 3072, 4000 and 6000 bits (not shown in Fig.) per second.

## Language settings

This will allow you to specify the language used in the menus and settings shown. The following languages are supported: English, Norwegian, Swedish, German, French, Italian, Japanese, Russian, Spanish, Korean, Finnish, Chinese (Simplified), Turkish, Polish, Hungarian, Czech.

Do as follows:

1. Start from the *Home* menu and navigate down to *Settings* and press the  $\checkmark$  key.
2. Then navigate to *Language* and press the  $\checkmark$  key again. Use the  $\blacktriangle$  and  $\blacktriangledown$  **Arrow** keys to select.
3. Press the  $\checkmark$  key to exit the menu putting changes into effect or the  $\blacktriangleleft$  **Arrow** key to leave the menu going one step back.



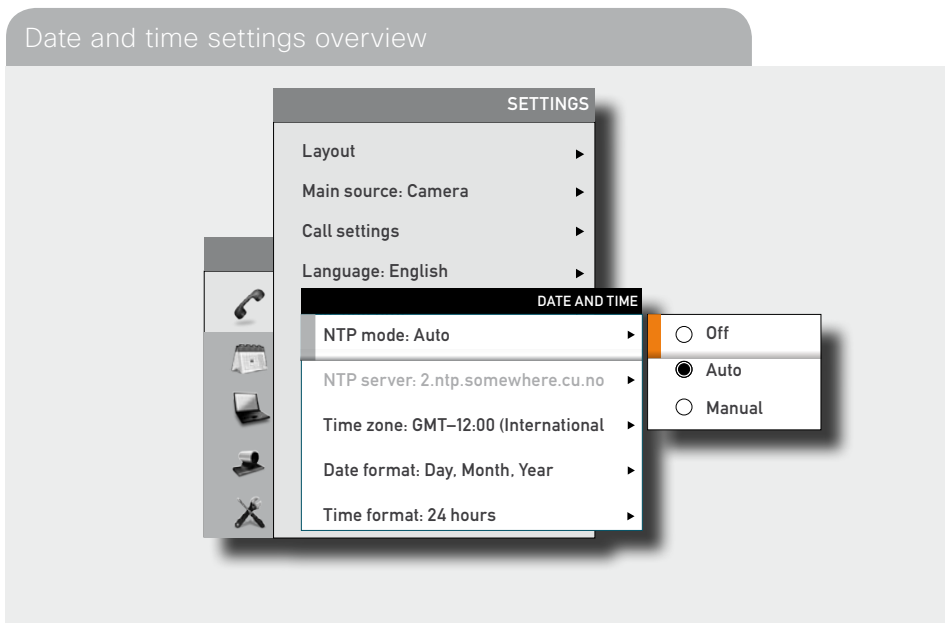
## About the setting of date and time

You may have the system pick date and time for you or you may specify date and time zone settings along with date and time format and the date and time of day itself.

Do as follows:

1. Start from the *Home* menu and navigate down to *Settings* and press the  $\checkmark$  key. Then navigate to *Date and time* and press the  $\checkmark$  key. Select between *NTP mode Off*, *Auto* and *Manual*.
  - Off:** NTP mode is disabled—you will then have to specify date and time
  - Auto:** The system locates the NTP server itself
  - Manual:** You must specify the path to the NTP server.
2. Press the  $\checkmark$  key to exit the menu putting changes into effect or the  $\blacktriangleleft$  **Arrow** key to leave the menu going one step back.

Further details are shown on the next page.



## Setting date and time yourself

You may specify date and time zone settings along with date and time format and the date and time of day itself.

Do as follows:

1. Start from the *Home* menu and navigate down to *Settings* and press the  $\checkmark$  key. Then navigate to *Date and time* and press the  $\checkmark$  key.
2. Use **Arrow** keys and the  $\checkmark$  key to set everything as required.

Deactivated NTP server

**CALL SETTINGS**

- NTP server: Off
- NTP server: 2.ntp.somewhere.cu.no
- Day: 10
- Month: September
- Year: 2010
- Time: 13:37
- Date format: Day, Month, Year
- Time format: 24 hours

The options shown here are available when NTP server *Off* has been chosen only.

- Year.Month.Day (yyyy.mm.dd)
- Month.Day.Year (mm.dd.yyyy)
- Day.Month.Year (dd.mm.yyyy)
- 24 hours
- 12 hours (am/pm)

## Setting date and time automatically

You may have the date and time of day set automatically. If you set NTP server to *Auto*, the system will take care of the connection to the NTP server itself.

If you set it to *Manual*, you must specify the path to the NTP server.

At any rate, you must still specify time and date formats as well as the time zone.

Activated NTP server

Scroll with the  $\blacktriangle$  and  $\blacktriangledown$  **Arrow** keys to access settings not shown.

**DATE AND TIME**

- NTP server: Auto
- NTP server: 2.ntp.somewhere.cu.no
- Time zone: GMT-11:00 (Midway Island)
- Date format: Day, Month, Year
- Time format: 24 hours

**TIME ZONES**

- GMT-12:00
- GMT-11:00
- GMT-10:00
- GMT-09:00
- GMT-08:00
- GMT-07:00
- GMT-07:00
- GMT-07:00
- GMT-06:00
- GMT-06:00
- GMT-06:00

**DATE AND TIME**

- Year.Month.Day (yyyy.mm.dd)
- Month.Day.Year (mm.dd.yyyy)
- Day.Month.Year (dd.mm.yyyy)
- 24 hours
- 12 hours (am/pm)

Setting NTP server to *Manual* lets you specify the path to the NTP server. Otherwise nothing is different from the *Auto* setting.

**DATE AND TIME**

- NTP server: Manual
- NTP server: 2.ntp.somewhere.cu.no
- Time zone: GMT-11:00 (Midway Island)
- Date format: Day, Month, Year
- Time format: 24 hours

Save  
Cancel

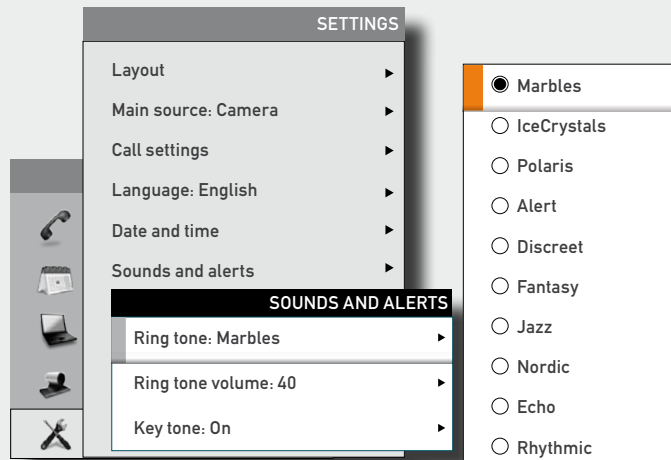
## Selecting ring tone

The system lets you choose between a multitude of ring tones.

Do as follows:

1. Start from the *Home* menu and navigate down to *Settings* and press the  $\checkmark$  key.
2. Then navigate to *Sounds and alerts* and press the  $\checkmark$  key. Navigate to *Ring tone* and press the  $\checkmark$  key. Use the  $\blacktriangle$  and  $\blacktriangledown$  **Arrow** keys to move among the ring tones. Each ring tone will be played when you position the cursor at it.
3. Press the  $\checkmark$  key to exit the menu putting changes into effect or the  $\blacktriangleleft$  **Arrow** key to leave the menu going one step back.

### Ring tone selection



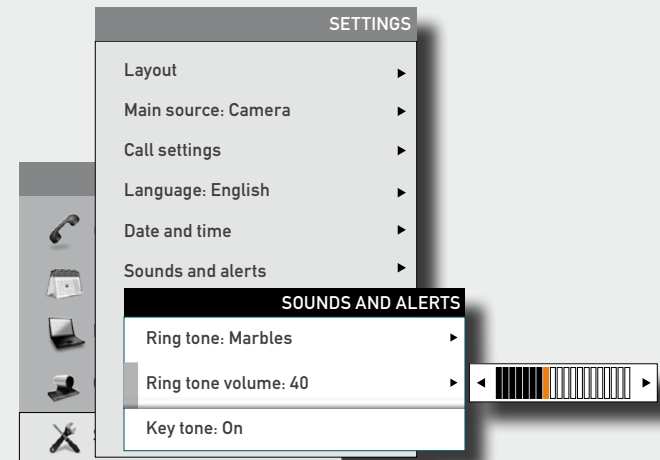
## Setting ring tone volume

The system lets you set the ring tone volume.

Do as follows:

1. Start from the *Home* menu and navigate down to *Settings* and press the  $\checkmark$  key.
2. Then navigate to *Sounds and alerts* and press the  $\checkmark$  key. Navigate to *Ring tone volume* and press the  $\checkmark$  key. Use the  $\blacktriangleleft$  and  $\blacktriangleright$  **Arrow** keys to set the volume.
3. Press the  $\checkmark$  key to exit the menu putting changes into effect or the  $\blacktriangleleft$  **Arrow** key to leave the menu going one step back.

### Ring tone volume settings



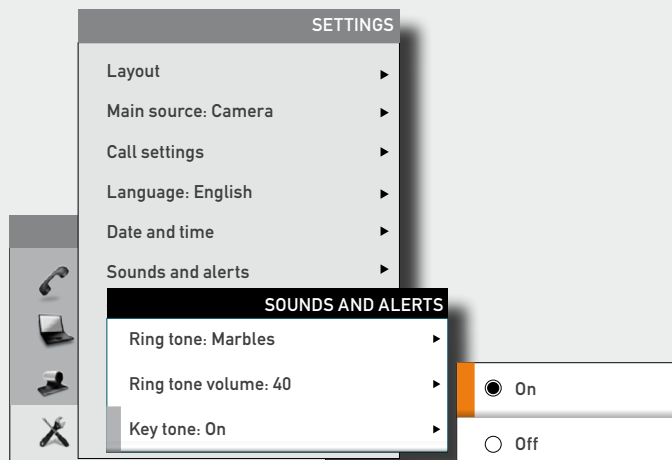
## Setting key tone to on or off

The system may be set to emit a sound when you press a key on the remote control inside the dialing dialog menu.

Do as follows:

1. Start from the *Home* menu and navigate down to *Settings* and press the ✓ key.
2. Then navigate to *Sounds and alerts* and press the ✓ key. Navigate to *Key tone* and press the ✓ key. Use the ▲ and ▼ **Arrow** keys to select.
3. Press the ✓ key to exit the menu putting changes into effect or the ◀ **Arrow** key to leave the menu going one step back.

### Keytone setting



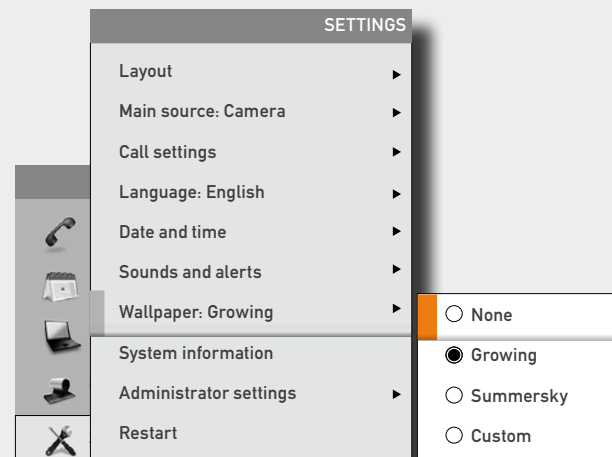
## Setting wallpaper on your screen

The system lets you set a wall paper on your screen. This is shown in idle condition only.

Do as follows:

1. Start from the *Home* menu and navigate down to *Settings* and press the ✓ key.
2. Then navigate to *Wallpaper* and press the ✓ key. Use the ▲ and ▼ **Arrow** keys to select wall paper. Uploading and inserting a custom wallpaper is explained overleaf.
3. Press the ✓ key to exit the menu putting changes into effect or the ◀ **Arrow** key to leave the menu going one step back.

### Wallpaper setting options





## Inserting your own wallpaper

The system lets you upload and use your own wallpaper (for example your logo) on your screen. This custom wallpaper picture can be any size up to 1920×1200 pixels.

The custom wallpaper is uploaded by means of the system’s web interface. See the Appendices section of the Administrator Guide for your system for further details about the web interface.

Do as follows:

1. Open a web browser and enter the IP address of the codec/endpoint of your system.
2. Select *Wallpaper* from the menu bar on the left side of the screen.
3. Browse for the file and click the *Upload* button.
4. Close the web browser.
5. Select *Custom* wallpaper (see the previous page) to put the change into effect.

Note that access to the system’s web interface may have been password protected by your administrator.

## System information

System information can be listed.

Do as follows:

1. Start from the *Home* menu and navigate down to *Settings* and press the ✓ key.
2. Then navigate to *System information* and press the ✓ key again.
3. To exit this screen, press the **Home** key (⏪).



A shortcut to this function is available. Make sure the system displays the *Home* menu (press the ⏪ key on the remote control to display this menu). Then press the rightmost softbutton to display the *System information*.

System information		Call status			
System name	Registered: ProfileSeries-120	Remote URI	0.0.0		
Uptime	1 day 21 hours 41 minutes	Call rate	0.0%		
NETWORK		Protocol	0.0%		
IP address	10.47.8.204	VIDEO	Transmit	Presentation	Receive
MQ33		Protocol	0.0%	0.0%	0.0%
Number	33333	Resolution	0.0%	0.0%	0.0%
ID	00000000000000000000000000000000	Channel rate	0.0%	0.0%	0.0%
Gatekeeper	10.47.1.98	Packet loss	0.0%	0.0%	0.0%
Status	Registered	Packet loss (%)	0.0%	0.0%	0.0%
SIP		Jitter	0.0%	0.0%	0.0%
Address	10.47.1.98	AUDIO	Transmit	Receive	
Proxy	10.47.1.56	Protocol	0.0%	0.0%	
Status	Registered, Secured, Not verified	Channel rate	0.0%	0.0%	
SOFTWARE		Packet loss	0.0%	0.0%	
Version	7.0.0.00000000000000000000000000000000	Packet loss (%)	0.0%	0.0%	
Options installed	NaturalPresenter, PremiumResolution, HighDefinition, Out	Jitter	0.0%	0.0%	
HARDWARE		Encryption	0.0%		
Module serial number	00000000000000000000000000000000	Type	0.0%		
MAC address	00:00:00:00:00:00	Status	0.0%		
CAMERA					
Camera 1 Model	PrecisionHD 100p 12X				
Camera 1 Software	00000000000000000000000000000000				

## Entering the Advanced configuration

Your video system has a separate set of Advanced configuration settings intended to be used by system administrators only. These settings may be protected by a password.

Aspects of the Administrator settings are discussed in more detail in the section “Advanced settings” on page 44.

A full presentation of the Administrator settings can be found in the Administrator Guide for your system, available separately for download from Cisco.com.

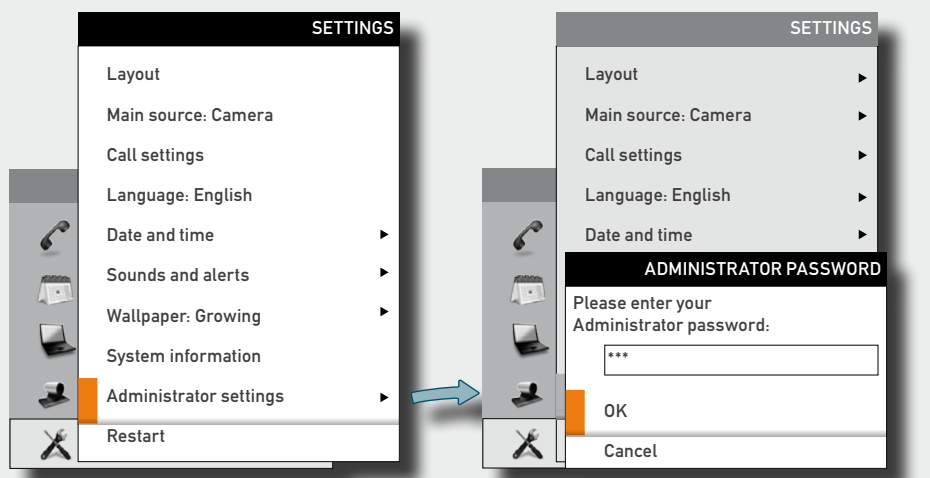
## Restarting the system

Some changes in the system settings, network settings and the infrastructure configurations may call for a system restart.

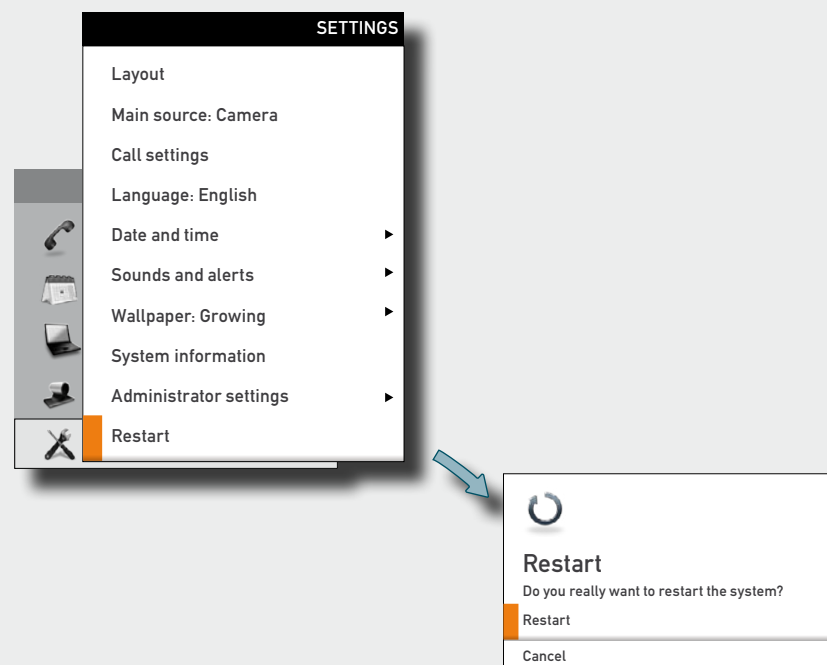
Do as follows:

1. Start from the *Home* menu and navigate down to *Settings* and press the ✓ key.
2. Then navigate to *Restart* and press the ✓ key.
3. Use **Arrow** keys and the ✓ key to make your selection.

### Advanced configuration entering



### Restarting



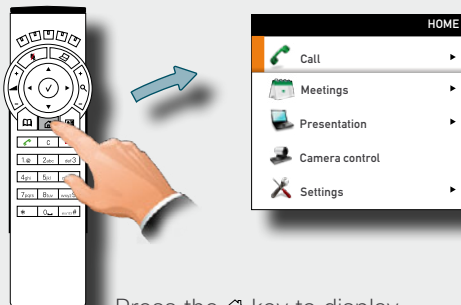


## Chapter 2

# Making calls

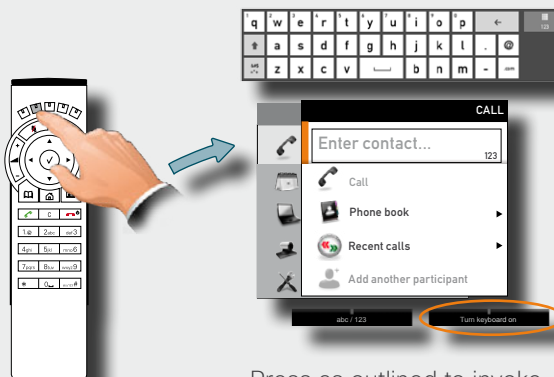
Placing calls by specifying the name, number or address

1



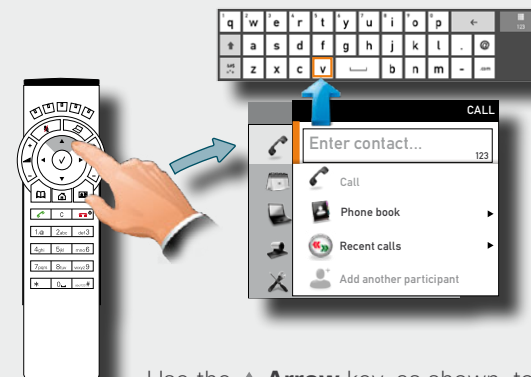
Press the key to display the *Main menu*.

2



Press as outlined to invoke the virtual keyboard.

3



Use the **▲ Arrow** key, as shown, to move the cursor up into the virtual keyboard (indicated by an orange square).

4



Use the **Arrow** keys to move about the keyboard and the **✓** key to select a character. Access special characters and numerics by means of the corresponding keys. Matches will appear as you write.

5



Press the **▼ Arrow** key a sufficient number of times to exit the keyboard and enter the list of matches (if such a list appears). Then use the **Arrow** keys to navigate to the one to call and press the **✓** key.

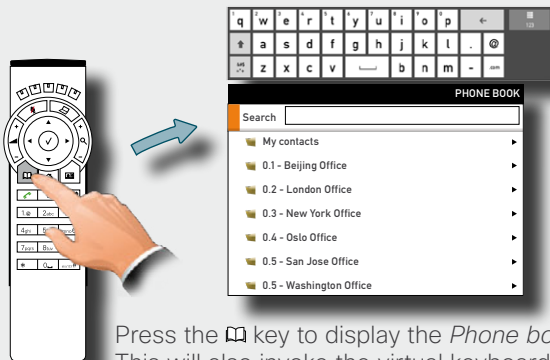
6



Press or the **✓** key to actually place the call.

Placing calls using the phone book

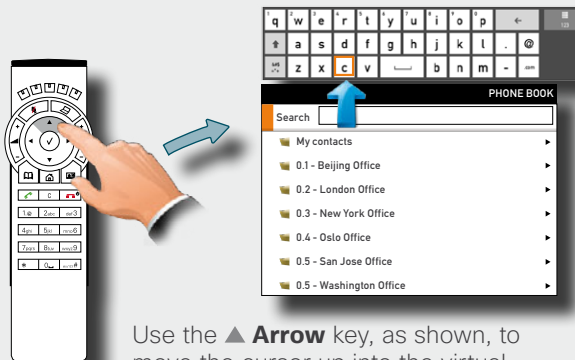
1



Press the key to display the *Phone book*. This will also invoke the virtual keyboard. Your phone book may contain folders, as outlined.

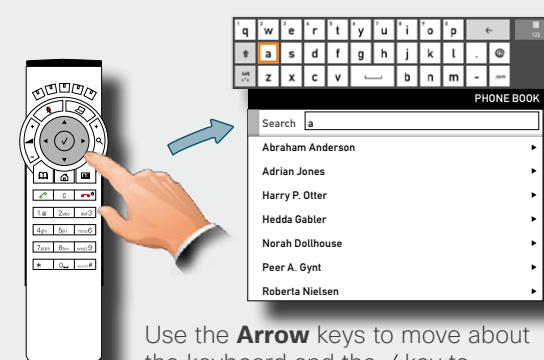
Any search you make will include current folder and any subfolders, so if you stay at the top level (sometimes referred to as the root level), your search will be made within all (sub)folders.

2



Use the **▲ Arrow** key, as shown, to move the cursor up into the virtual keyboard (indicated by an orange square).

3

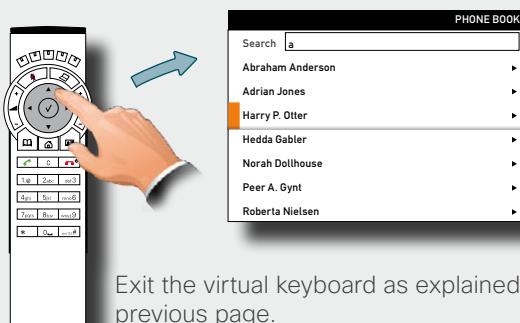


Use the **Arrow** keys to move about the keyboard and the **✓** key to select a character.

Access special characters and numerics by means of the corresponding keys.

Matches will appear as you write, as outlined.

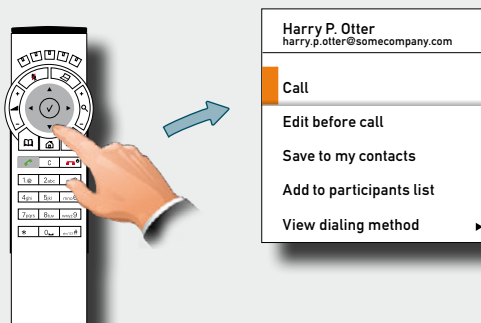
4



Exit the virtual keyboard as explained on the previous page.

Navigate to the entry to be called and press the **✓** key or the **▶ Arrow** key to produce the options available.

5



Call the entry selected (press or the **✓** key).

Edit the entry (for example insert a prefix) and then call.

Save the entry to your personal list of contacts.

Add to list of participants in a multisite call (optional feature).

View dialing method options (H.323 and SIP wherever applicable).

More about the phone book can be found in the section "Phone book usage"—click on the topic on the menu line at the top of this page.

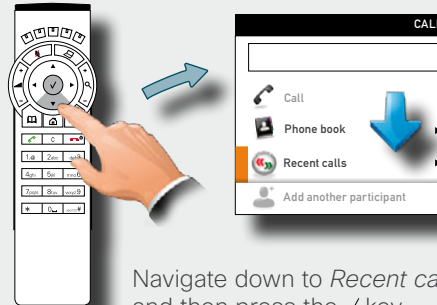
Placing calls by means of the Recent calls list

1



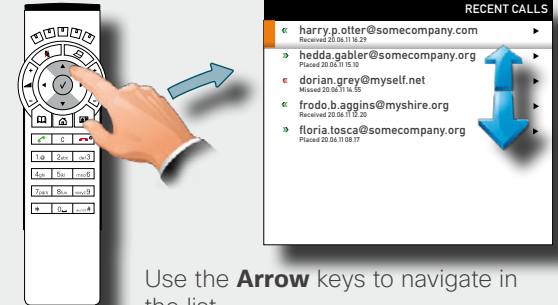
Press the key to display the *Main menu*.

2



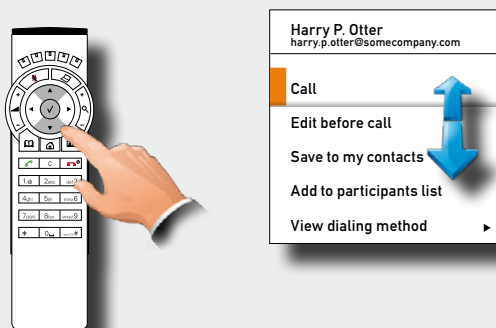
Navigate down to *Recent calls* and then press the key.

3



Use the **Arrow** keys to navigate in the list.


4




- Call the entry selected (press or the key).
- Edit the entry (for example insert a prefix) and then call.
- Save the entry to your personal list of contacts.
- Add to list of participants in a multisite call (optional feature).
- View dialing method options (H.323 and SIP wherever applicable).



### When someone is calling you


Press the  key on the remote control to answer an incoming call.



Press the  key on the remote control to reject an incoming call.



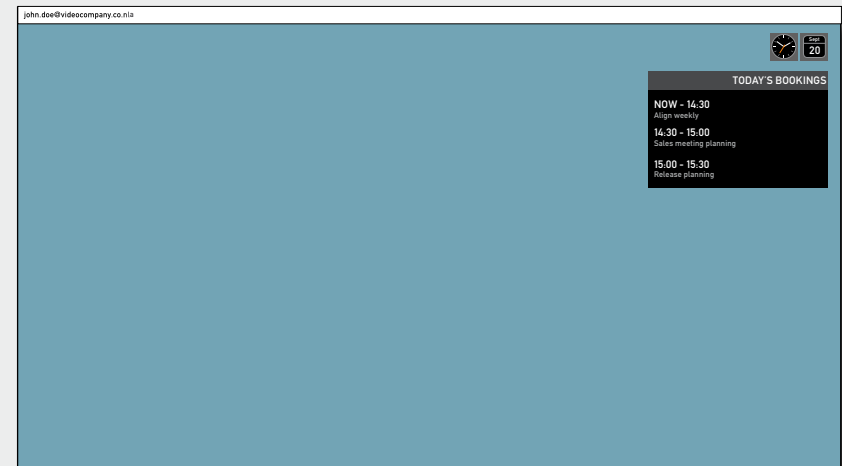
### Terminating an ongoing call

Press the  key on the remote control to terminate an ongoing call.



### Management systems booking list

If your video network makes use of the Cisco Telepresence Management System (TMS), your video system may be set up for scheduled meetings from remote. Typically, the TMS works with tools like Microsoft Outlook, permitting employees to book and schedule video calls and conferences. Any bookings applicable to your system will appear on the screen as shown in the below example.



## Calling more than one (optional)

Provided that your video endpoint is equipped with the *optional* built-in Multisite feature, any point-to-point video call (a call involving two parties only) may be expanded to include additional participants. The call will then become a *video conference*.

Any ongoing video call can then be expanded to a video conference by adding more participants at all times (see the right example).

Alternatively, you may set up a list of whom to call before you actually call them and then call them all in one go (see the below example).

Note that your video network may have an infrastructure permitting video conferencing—even if your video system itself does not. This will require the presence of an external Multipoint Control Unit (MCU).

The most advanced video systems (those using Codec C60 or C90) can—when equipped with Multisite—set up video meetings with four participants (yourself included). External MCUs may let you set up conferences with many more participants.

Systems equipped with Codec C20 have no Multisite feature (see ► page 30 to find out which type of codec your system has). However, all products described in this user guide come with Multiway™ installed (see the next page for more on this).

Contact your system administrator for details on how to use external MCUs.

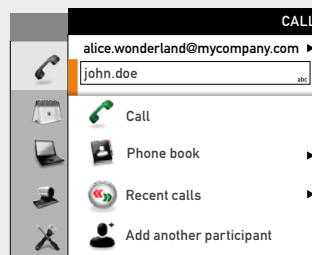
### Setting up a list of whom to call before calling them

This example shows two entries made before any calls are placed.

To do this start by entering the first person to call (directly, via the recent calls list or from the phone book), then select *Add another participant* and add a second person. When all have been entered, press **Call** on the remote control or select the *Call* icon in the menu.

For units equipped with MultiSite capabilities, up to three participants can be called simultaneously, if no external MCUs are used.

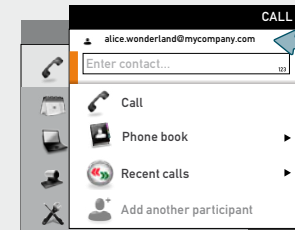
After you have entered the participants, press the key to place the calls. Any of these may, of course, be fetched from the phone book in the usual manner.



### Calling participants one by one

1

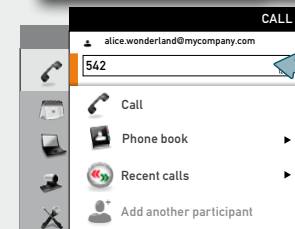
During a call, open the *Call* menu again...



This is the participant you already are in a call with.

2

Then call someone in the usual manner—by keying in the name, number or address (in this case “542”) or by means of the phone book. Invoke the virtual keyboard (see ► “Entering text in text fields” on page 7), if convenient.

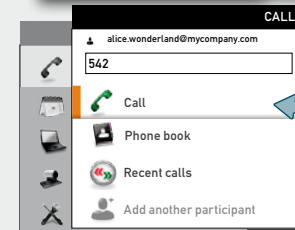


The next participant you are going to call.

3

Finally, navigate down to *Call* and place the call...

If you want to add another participant, repeat the process. The maximum number of participants possible depends on your system’s configuration.

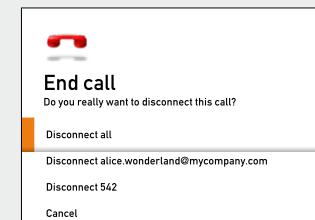


Use this to place the call.

### Terminating a video conference

The host of a video conference is the one who initiated the conference. This is the endpoint to which all the others are connected.

The host has the right to terminate the connection to any of the participants. The participants cannot control any of the others, but may disconnect themselves from the meeting at all times.



# Using Multiway™ to call more than one

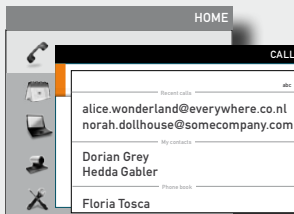
All systems described in this User guide offer Multiway as a means to call more than one. Note that successful use of Multiway requires the presence of certain infrastructure products. If in doubt check with your system administrator.

## Using Multiway, Case 1

Assume that you already are in a call and that you would like to expand the call to include someone else.

Do as follows:

- 1 Start calling someone else by pressing the or the key on the remote control.



- 2 Enter the number or URI of the person to be included, either directly or by means of the phone book or the list displayed) and place the call by pressing the key. This will put the current call on Hold. When the new participant replies, select **Join Calls**.



- 3 All three of you will now be in the same meeting.
- 4 Repeat to include more participants if needed.

## Using Multiway, Case 2

Someone calls you while you are in a call. You will need to decide whether the calling party shall be invited to join the current call or not.

- 1 Someone calls you while you are in a call. A dialog box giving you three options will be shown.



- 2 Select *Accept (put current call on hold)*.
- 3 When you are ready to create the conference, select *Join Calls*.



- 4 All three of you will now be in the same meeting.

**Case 2 options:** If you do not want to set up a Multiway conference, you have the following choices in 2. above:

- If you want to accept the incoming call instead of the current call, select *Accept (disconnect current call)*.
- If you do not want to respond to the incoming call, select *Reject*.



The maximum number of participants in a Multiway call is limited by the capabilities of the infrastructure of your network only. The two cases described on this page may be combined as much as you want.

## Which codec does my system have?

The optional ability to call more than one participant—the MultiSite feature— does not apply to all video endpoints. This depends on the type of codec your system is equipped with. The following applies:

- Endpoints using Codec C40, C60 and C90 support MultiSite and MultiWay.
- Endpoints using Codec C20 do not support MultiSite, but MultiWay.
- Quick Set C20/C20 Plus both use the Codec C20. Consequently, they do not support MultiSite, but MultiWay.

At any rate, MultiSite is an optional feature that may—or may not—be present in your endpoint.

If you need to see which type of codec your system is equipped with, open the bottom module lid of the system.

### Looking for codec type:



Open the bottom module lid as shown, to see which type of codec you have.

### Profile series codecs:



Codec C90



Codec C60



Codec C40



Codec C20



## Chapter 3

# Phone book usage

## Basic phone book features

Your video system contains a phone book. The phone book is organized in a way very similar to what you find in a mobile phone.

It contains a section where you can add your own list of contacts, and most corporate solutions will also include a corporate phone list.

This corporate phone list is normally installed and maintained from remote by your system administrator through a management system like the Cisco Telepresence Management Suite (TMS), which is available separately.

You cannot edit the corporate list yourself, but you may add entries to *My Contacts*. These may be edited as much as you want.

### Navigating in the phone book

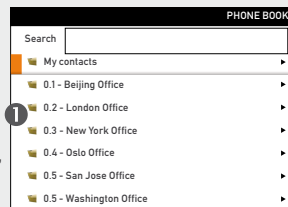


Navigate in the phone book with the **Arrow** and **✓** keys.

The phone book may contain folders indicated by folder icons (1). Press the **▶ Arrow** key to display the contents of a folder. Repeat, if needed, if there are more folder levels.

Whenever you are at a lower level, use the **◀ Arrow** key to move one level back.

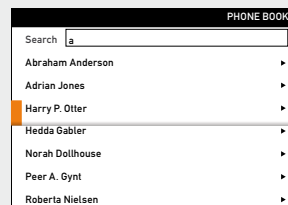
Searching for an entry is explained on the next page.



### Calling an entry in the phone book



When an entry is located, just press the **☎** key to place the call.



### Opening the phone book

1

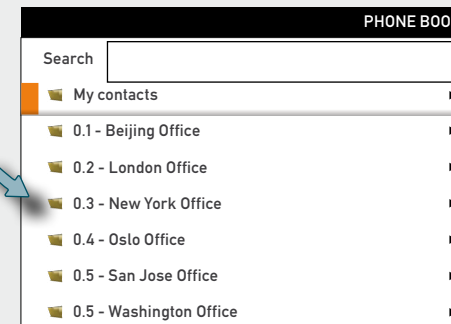
Press the **☰** key...



... the *Phone book* menu will now open...

2

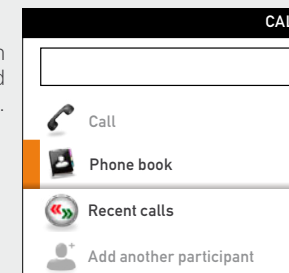
Folders contain phone book entries (and they may even contain subfolders).



The phone book typically contains your own *My contacts* and a corporate phone book. You may create your own list of contacts in *My contacts*.

3

The phone book can also be accessed from the *Call* menu.





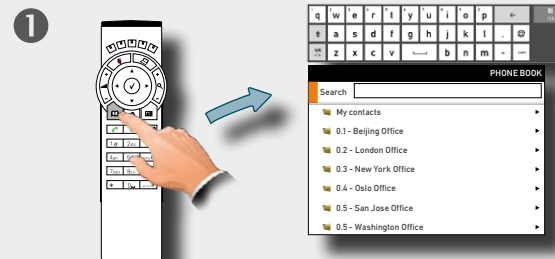
## Searching in the phone book

The *My contacts* may contain up to 200 entries, but the entire phone book can be virtually unlimited in size. Consequently, using the arrow keys as the only navigation device can easily mean a lot of work. What to do?

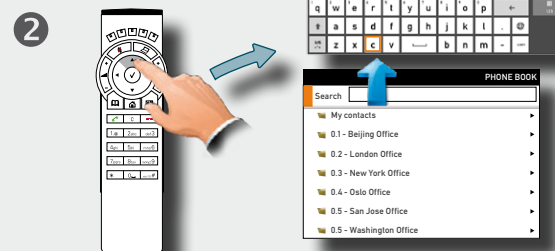
Enter the search function. By means of a virtual keyboard the search procedure is a simple and convenient way of locating an entry.

Your phone book may contain folders, as outlined. Searches made will include current folder and any subfolders, so if you stay at the top level (sometimes referred to as the root level), your search will be made within all the (sub)folders.

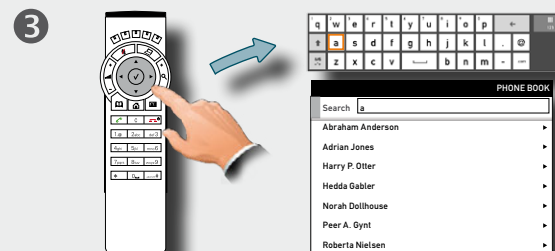
### How to search for an entry



Press the key to display the *Phone book*. This will also invoke the virtual keyboard.



Use the **▲ Arrow** key as shown to move the cursor up into the virtual keyboard (indicated by an orange square).



Use the **Arrow** keys to move about the keyboard and the **✓** key to select a character.

Access special characters and numerics by means of the corresponding keys.

Matches will appear as you write, as outlined.

How to call the selected entry is shown in the section "Making calls".

Add more letters to narrow and refine your search.

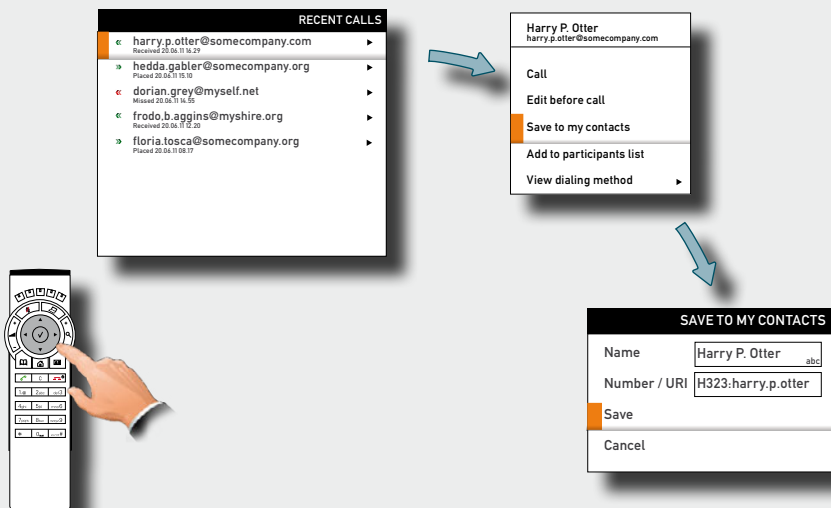
**Example:** Keying in **da**, will return entries like **Da**ve Olson and **Da**vid Jones, but also John **Da**hl and Vittorio **Da**lmazzino. There is no case sensitivity.

# Adding new contacts to the phone book

New contacts can be added to *My contacts* only. Other entries must be entered by your system administrator.

## Adding an entry from recent calls or the phone book

While you are inside the phone book or inside the list of recent calls, navigate to the entry you would like to copy to *My contacts* and press the **✓** key or the **▶ Arrow** key to show the *Options* menu:

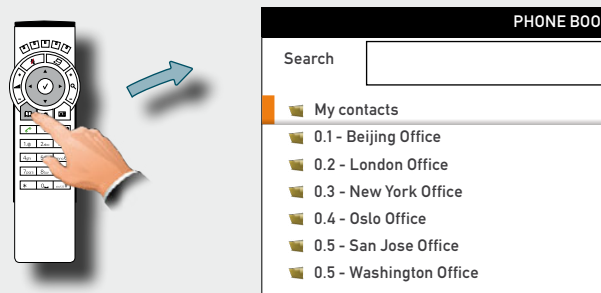


Navigate down to *Save to my contacts* and press the **✓** key to open the dialog box that allows you to edit the entry, if needed.

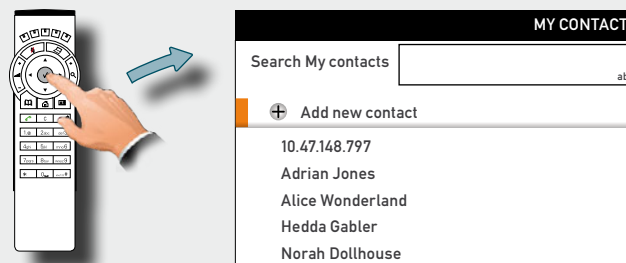
This is similar to entering a new contact manually (see right for details), but in this case the name and number or address (URI) of the copied contact has already been filled in for you by the system. If you want to edit the information entered, you may do so. Remember to save before leaving the menu.

## Adding an entry manually to My contacts

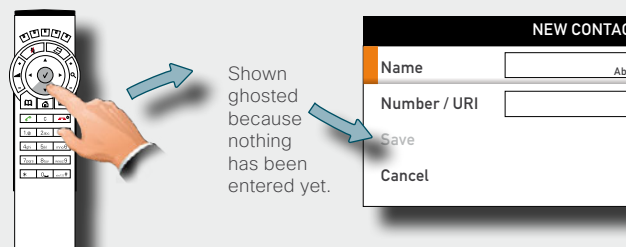
- 1 Open the phone book by pressing the key on the remote control and navigate to *My contacts*:



- 2 Press the **✓** key to show the contents of *My contacts*:



- 3 Navigate to *Add new contact* and press the **✓** key:



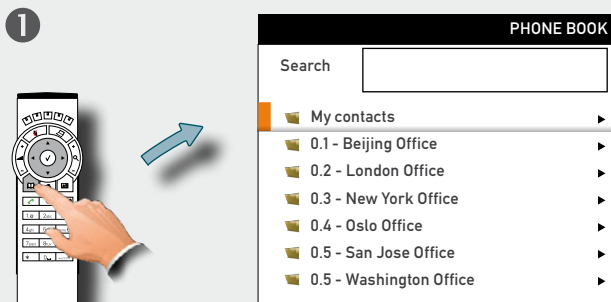
Enter name and number or address (URI) of the new contact. After you have entered this information, the *Save* field will no longer appear ghosted and you may navigate down to this field and press the **✓** key to save your new entry.

Alternatively, navigate down to *Cancel* and press the **✓** key to exit the dialog box without saving the new entry.

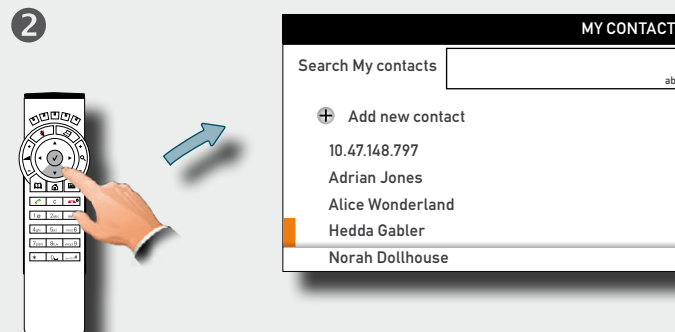
## Editing existing entries in the phone book

You may edit and delete entries in *My contacts* any time. Since updates in the corporate phone book(s) made by your system administrator will fail to affect *My contacts*, you may have to use this feature from time to time if corporate phone book changes are made.

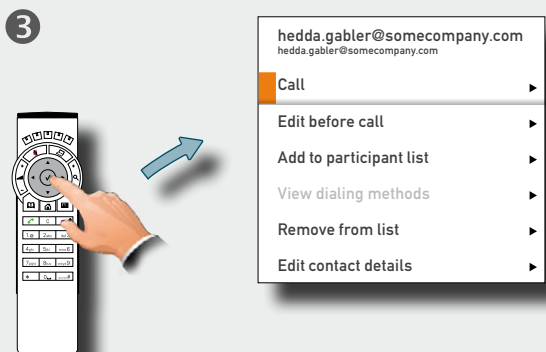
### Editing entries in the phone book



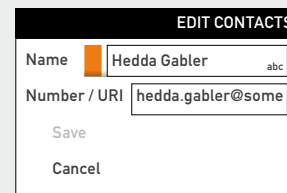
1 Open the phone book by pressing the key and then navigate to *My contacts*. Press the key to open *My contacts*.



2 Navigate to the entry to be edited and press the key.



- You may call the entry directly.
- You may edit the number or URI.
- You may add the entry to participants list when setting up a conference.
- If the entry is listed with more dialing methods than the default, you may use this to, for example use H.323 instead default SIP (or the other way around).
- You may remove the entry from the list.
- You may edit contact details.





## Chapter 4

### In-call features

## Sharing contents

General recommendations tips for making your video meeting room as good as possible are described in the Administrator guide for this product. The Administrator guide may be downloaded from [www.cisco.com/go/telepresence/docs](http://www.cisco.com/go/telepresence/docs).

### Dual video stream

With dual video stream you can view two different live video streams simultaneously—the main video and one additional source. This could for example be both a PC presentation and the person who gives the presentation.

If a video system does not support dual video stream, no second video stream will be established for this system and the PC presentation will be shown as the main video.



### Sharing PC contents

- 1 Make sure the PC does not cover your line of sight to any of the microphones. This will reduce the perceived audio quality at the far end.
- 2 Locate the DVI cable and connect the PC to the video system. Connect the audio mini-jack output from the PC, or any other source—including Ipod—to the mini-jack socket of the cable to get sound. Connect the RCA connectors to the corresponding sockets on the codec/endpoint.
- 3 The default presentation source will be activated when you press the **Presentation** button (🖥️) on the remote control, as outlined.

The DVI/VGA input is compliant with VESA Extended Display Identification Data (EDID) and will be able to notify the PC of the supported output formats.

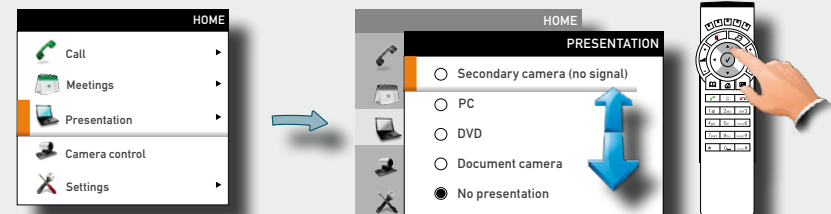


### If the shared contents fail to show

- Normally you must press a special key combination to switch the PC image from the PC screen to the video screen.
- Check that the presentation source is correctly defined. Access to this setting may be password protected by your system administrator. The procedure is described in the Administrator guide for this product.
- Make sure your PC is set to activate your VGA output.

### Selecting the source

To specify which source to serve as presentation source select it as shown here. Note that the name of each source can be changed, consult your administrator for details on this. All options shown are not available to all systems.



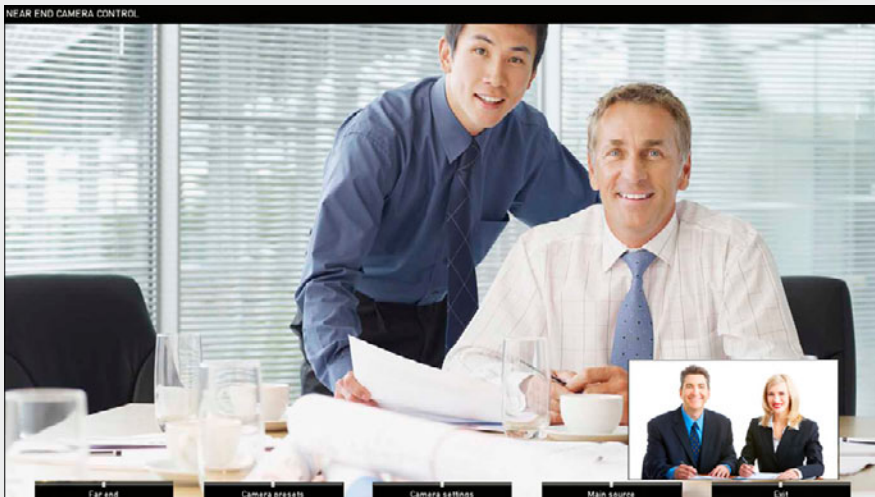
# Controlling the cameras

During a call, you may control where your own camera is pointing (i.e. pan and tilt) and the zoom. However, far end systems with remotely controllable cameras may also permit you to control their camera's panning and zooming. This is called *Far end camera control*.

For video conferences with more than two participants, *far end* is an ambiguous term. If you are the initiator of a conference the only far end camera controllable by you will be the first participant you called. The other participants may all control your camera, but they cannot control each other.

## Controlling your own camera (near side)

- 1 In a call use the **Arrow** keys of the remote control to enter the camera control mode. Softbuttons will now appear as shown below.
- 2 Use the **Arrow** keys and the **Zoom** keys to pan, tilt and zoom your camera.
- 3 Exit the mode when finished.



- Access to far end camera (if far end camera is remotely controllable).
- Access to your own camera presets, if defined.
- Access to your own camera's settings.
- Access to your own system's main source setting.
- Exit this mode.

## Controlling far end camera (far side)

- 1 In a call use the **Arrow** keys of the remote control to enter the camera control mode. Softbuttons will now appear as shown below.
- 2 Press the leftmost **Function** key to access the far end camera.
- 3 Proceed as for near end camera control.



- Back to near end camera control.
- Exit this mode.





## Chapter 5

# Scheduled meetings

## Joining a meeting

Your system may be connected to a management system capable of scheduling meetings for your video systems. Any meetings scheduled will then appear in the *Table of Meetings* as outlined below. You cannot navigate in that table with the remote control. To produce a list in which you can navigate with the remote control, see ► “Displaying a list of upcoming meetings” on the next page.

The Table of Meetings contains 14 days of scheduled meetings. The list is sorted using Grouping headers. The main grouping category is by day (e.g.: TODAY, TOMORROW, then WEDNESDAY, July 20, 2011 etc).

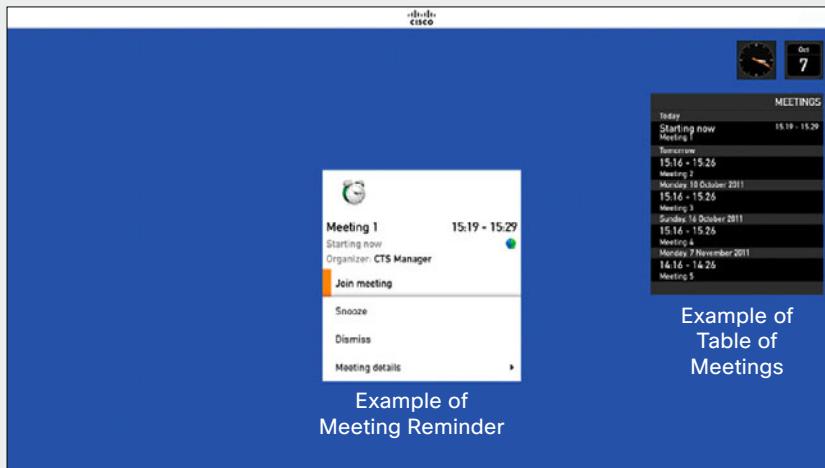
On your video system the *Meeting Reminder* will appear once it is possible to join a meeting. Exactly when that will be depends on the Start time buffer setting, which has been set by your system administrator. Default buffer setting is 10 minutes.

The meeting reminder contains a time indicator stating when the meeting starts, or alternatively for how long the meeting has been going on (an ongoing meeting is referred to as a *Meeting in progress*).

The text *Starting now* will be shown during a time interval spanning from 30 seconds before to 30 seconds after the scheduled start time of the meeting.

### To join a meeting or not

- Select the *Join meeting* and press **OK**. This connects you to the “dial in” address. .
- Select *Snooze* and press **OK** to temporarily hide the Reminder for 5 minutes..
- Select *Dismiss* and press **OK** to close the Reminder.



Example of Table of Meetings

Example of Meeting Reminder

## Learning more about a meeting

You may use the Reminder to learn more about the announced meeting—just navigate down to *Meeting details* and expand the item.

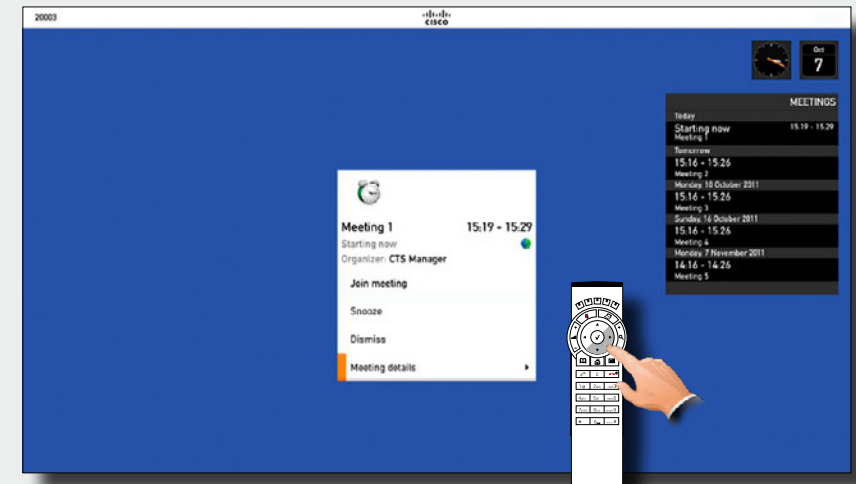
Meeting details will typically include who the organizer is; whether the meeting will be recorded or not; a description of the meeting; whether it may be extended, if needed (see ► “Extending a scheduled meeting” on page 43 for more on this); dial in information etc.

Observe that when a scheduled meeting appears as *Private meeting* it will contain information about the organizer only. There will be no title, no expandable meeting outline nor will there be any dial-in information.

See ► the next page for an example of how the Meeting details are presented.

### Viewing meeting details

- In the Reminder navigate down to *Meeting details* and expand this menu item to see meeting details. An example of Meeting details is shown on the next page.





## Displaying a list of upcoming meetings

If you want to take a closer look on any of the upcoming meetings including your video system, you will need to look in a List of Meetings that lets you navigate in it with the remote control.

Otherwise this list is identical to the table of upcoming meetings, as can be seen below.

## Meeting details of any upcoming meeting

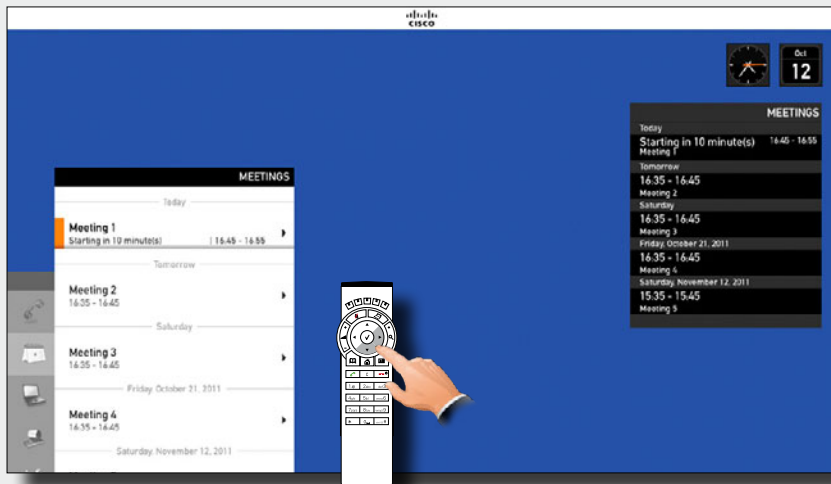
Once you have selected one of the upcoming meetings in the list, you may look into the details of that meeting.

Even from this menu you may join the meeting, provided that you are inside the time window allowing you to join. The length of this time window depends on the Start time buffer defined by your system administrator. See ► the previous page for more on this.

An upcoming meeting will be shown in the Meeting Reminder, which pops up by itself on the screen, see ► the previous page for more on this.

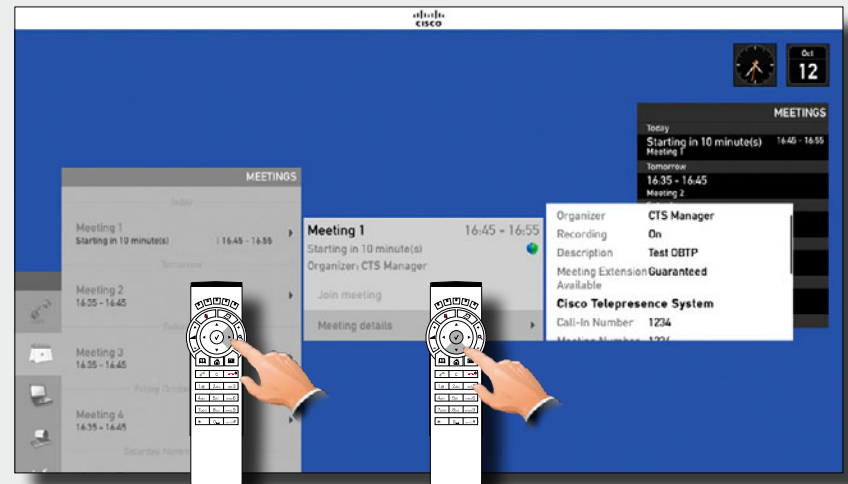
### To display a meetings list you can navigate within

- In the *Home* menu, navigate down *Meetings* and expand the item to produce a List of Meetings.



### Viewing details of any meeting

1. Navigate to the meeting to be looked into and expand the menu item.
2. Then navigate down to *Meeting details* and expand this menu item to see meeting details.



## Joining when already in a call

If you already are in a call (a video meeting), the *Join meeting* field will change to reflect the new situation.

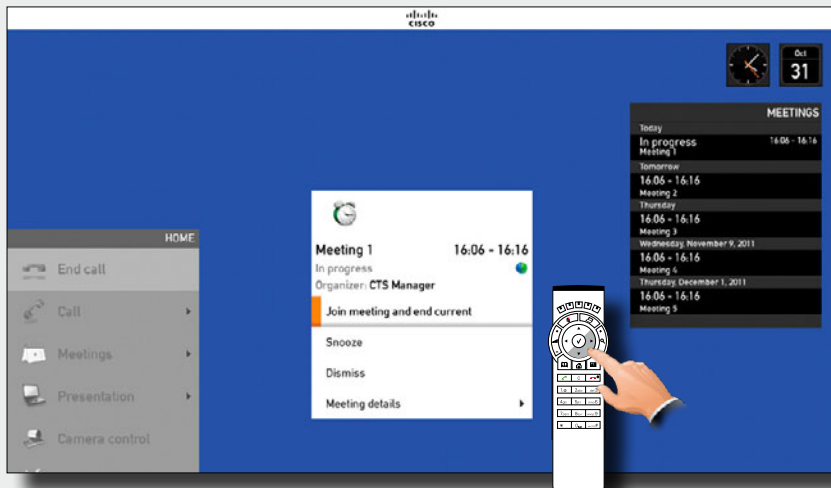
## Parallel meetings (concurrency)

When Parallel meetings occur (two or more meetings taking place simultaneously), an alert will appear, as outlined.

Selecting *View meetings* followed by pressing **OK** will produce the List of Meetings, with the parallel meetings shown at the top of the list as outlined below.

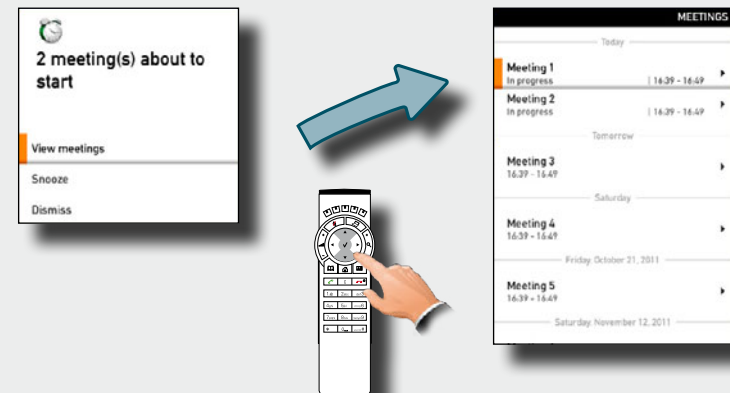
### Joining the meeting

- If you already are in a call, the Join meeting button will change to *JOIN & END CURRENT*.
- Select *JOIN & END CURRENT* button to join the new meeting, ending the current.
- Select *Join & Hold Current* to temporarily join the meeting.
- Select *Snooze* to temporarily hide the Reminder for 5 minutes.
- Select *Dismiss* to go on with your current meeting.
- You can always look into the meeting details to help you make up your mind, select *Meeting details* for this.



### Selecting which meeting to join

1. Expand *View meetings* as outlined.
2. Then navigate down to the meeting you want to join and join in the usual way.



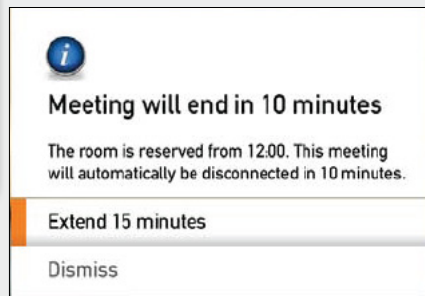
## Extending a scheduled meeting

Scheduled meetings have a fixed start and end time. When you are in a scheduled meeting, a *Meeting will end* notification appears 10 minutes, 5 minutes and 2 minutes before the meeting is brought to an end by the management system.

You may want to extend an ongoing meeting. This will be accepted by the system provided that no other meeting is scheduled on the video system during the period of extension.

### Extending the meeting

- If an extension is sustainable, the *Meeting will end* notification will include an *Extend* and a *Dismiss* option.
- To extend a meeting, make sure the *Extend field* is selected, as outlined, and then press **OK**.
- If you do not want to extend the meeting, navigate to *Dismiss* and press **OK**.





## Chapter 6

# Advanced settings

# About the Administrator settings

The *Administrator settings* lets you define extra softbutton functions; change the IP settings of the system; use the advanced configuration options and change the menu access password.

Your video system can be configured through its web interface, but it may also be configured through the *Advanced configuration*. This is all normally done by your system administrator, who may have password protected the access to the *Advanced configuration*.

## Administrator settings & password

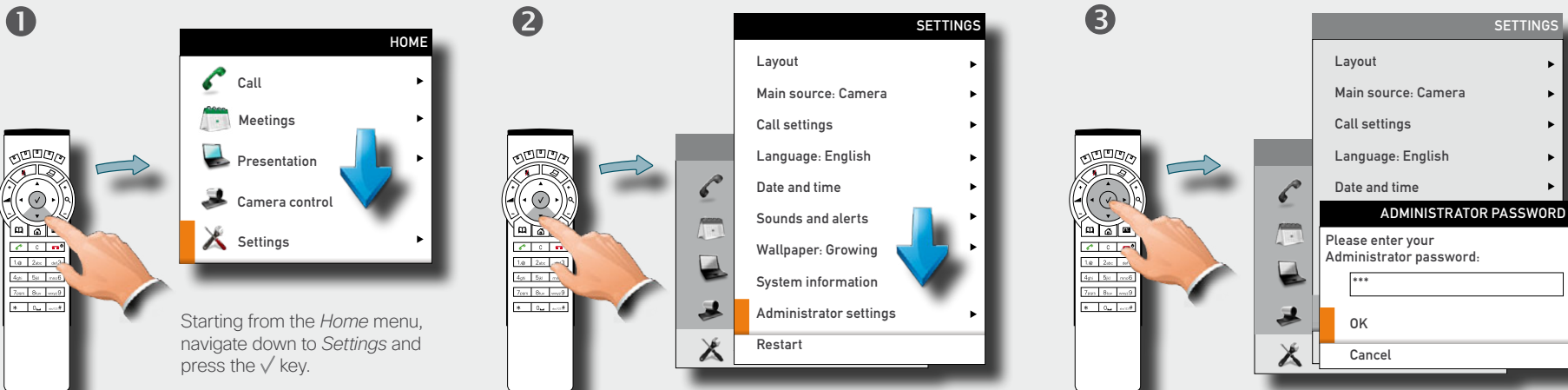
The Advanced configuration settings are aimed at system administrators only and may have been password protected by your system administrator. Unless you are the system administrator you should normally leave these settings as they are.

The IP settings (not shown) are also aimed at system administrators.

The Advanced configuration settings and the IP settings are described in the Administrator Guide applying to your video system. This guide can be downloaded from [www.cisco.com/go/telepresence/docs](http://www.cisco.com/go/telepresence/docs).

The password may not have been set. If you decide to give your system a password, take care. If you forget your password contact your Cisco representative for help.

## Entering the Administrator settings

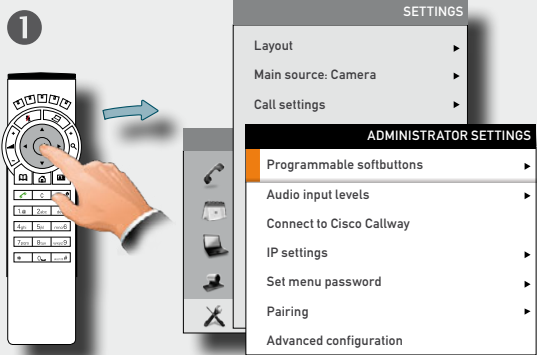


# Assigning softbutton functions

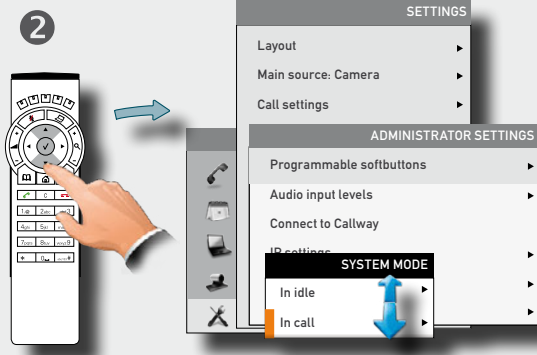
The **Function** keys of the system's remote control are used to control the softbuttons appearing along the lower end of the screen—see also ► "Navigating in the menus" on page 6 for more.

The softbuttons are context sensitive, which means that they appear only when needed and not else. You may enhance your system's perceived performance by assigning your own functionalities to the softbuttons.

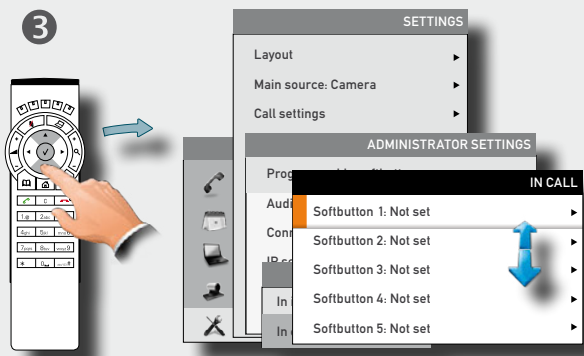
## Assigning a function to a softbutton



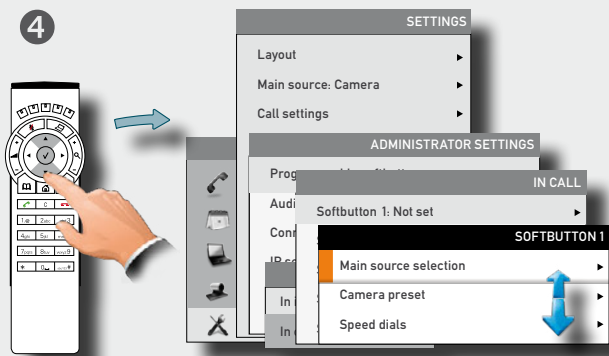
Navigate to *Programmable softbuttons*, as outlined, and press the ✓ key. See also the previous page, if needed.



Navigate to select whether the softbutton function shall apply to idle or to in-call conditions. Press the ✓ key.



Navigate to select which softbutton to assign a function to. Press the ✓ key.



Select among the options available and press the ✓ key. The options are presented in detail on the following pages.



If you want a softbutton assignment to apply to both idle and in-call situations, you must assign a function twice.

There must be one setting for idle and another one for in-call mode.

Note that any softbutton may be assigned to any of the functions available.

Consequently, setting one softbutton to a specific function for idle situations does not require that the same function must be assigned to the same softbutton for in-call situations.

However, doing so may appear more logical in many cases.



The description presented on this page assumes that you **are already inside** the *Administrator settings*, as described on the previous page.

The access to the *Administrator settings* may have been password protected by your system administrator. Contact your system administrator, if in doubt.

## Creating softbutton for Main source selection

If you want direct access (via the softbuttons along the bottom line of the screen) to the source used, you should assign the function *Main source selection* to one of the softbuttons. Below we use **Softbutton 1** as an example, but the function may, of course, be assigned to any of the five softbuttons.

## Creating softbutton for Camera Preset

If you want direct access (via the softbuttons along the bottom line of the screen) to predefined camera presets, you should assign the function *Camera preset* to one or more of the softbuttons.

Note that camera presets must have been defined before you start assigning presets to any of the softbuttons—see ► “Camera presets” on page 9 for more on camera presets.

Below we use **Softbutton 4** as an example, but the function may, of course, be assigned to any of the five softbuttons

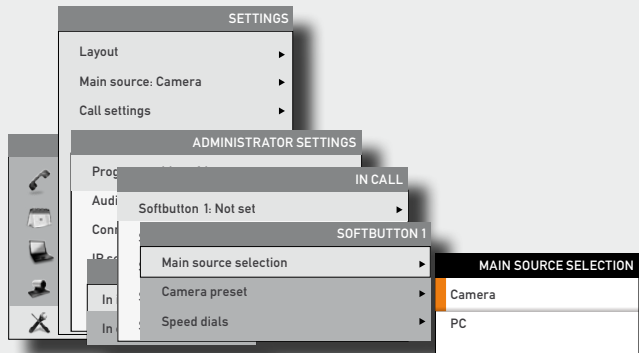


How to get to the menus shown below left and below right is described on the previous page.



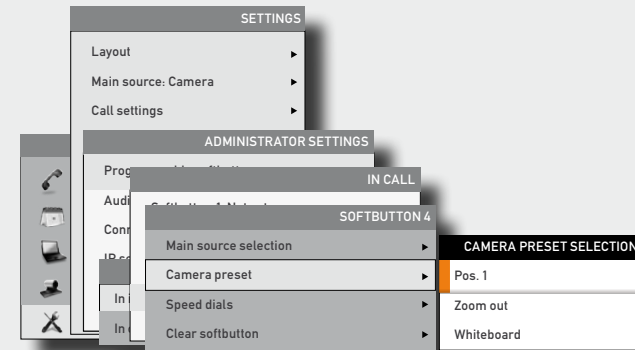
If you have set Softbutton 1 to PC as main source, you may want to set Softbutton 2 to Camera (or the other way around) in order to be able to conveniently switch between the two.

### Assigning Main source selection softbutton



The number of sources available will depend on your system.

### Assigning Camera preset softbutton



## Softbutton—Speed dials

If you want direct access (via the softbuttons along the bottom line of the screen) to contacts in the phone book, you should assign the function *Speed dials* to one or more of the softbuttons.

Note that assignments can be made to existing contacts only (My contacts as well as the corporate phone book). To add a contact to your list of contacts, see ► page 34.

Below we use **Softbutton 5** as an example, but the function may, of course, be assigned to any of the five softbuttons.

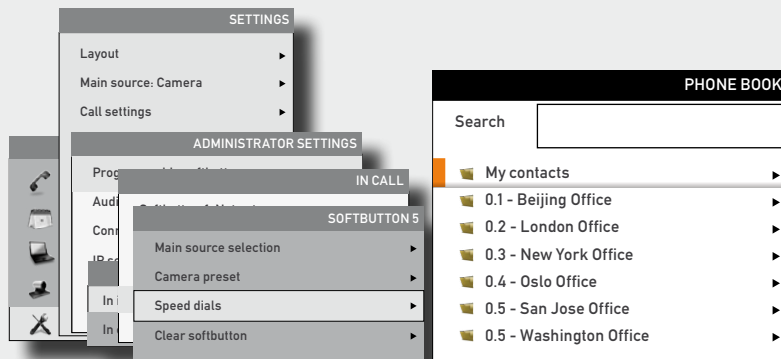
## Customized softbuttons—how they appear

The below illustration shows how the video system screen may look with five customized softbuttons defined.



How to get to the menu shown below is described two pages back.

### Assigning Camera preset softbutton



### Example of customized softbuttons





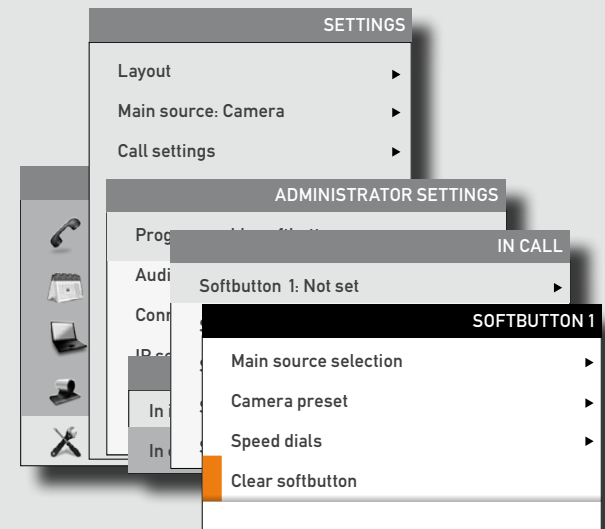
## Softbutton—Clearing softbuttons

You may clear softbuttons that you no longer want to appear. This is done via the *Clear softbutton* at the bottom of the menu. You do not have to clear a softbutton function before assign the same softbutton to another function. That may be done right away.

For more on how to get to the below menu—see ► “Assigning softbutton functions” on page 46 for details.



Make sure you select the right softbutton (idle mode or in-call mode).



THE SPECIFICATIONS AND INFORMATION REGARDING THE PRODUCTS IN THIS MANUAL ARE SUBJECT TO CHANGE WITHOUT NOTICE. ALL STATEMENTS, INFORMATION, AND RECOMMENDATIONS IN THIS MANUAL ARE BELIEVED TO BE ACCURATE BUT ARE PRESENTED WITHOUT WARRANTY OF ANY KIND, EXPRESS OR IMPLIED. USERS MUST TAKE FULL RESPONSIBILITY FOR THEIR APPLICATION OF ANY PRODUCTS.

THE SOFTWARE LICENSE AND LIMITED WARRANTY FOR THE ACCOMPANYING PRODUCT ARE SET FORTH IN THE INFORMATION PACKET THAT SHIPPED WITH THE PRODUCT AND ARE INCORPORATED HEREIN BY THIS REFERENCE. IF YOU ARE UNABLE TO LOCATE THE SOFTWARE LICENSE OR LIMITED WARRANTY, CONTACT YOUR CISCO REPRESENTATIVE FOR A COPY.

The Cisco implementation of TCP header compression is an adaptation of a program developed by the University of California, Berkeley (UCB) as part of UCB's public domain version of the UNIX operating system. All rights reserved. Copyright © 1981, Regents of the University of California.

NOTWITHSTANDING ANY OTHER WARRANTY HEREIN, ALL DOCUMENT FILES AND SOFTWARE OF THESE SUPPLIERS ARE PROVIDED "AS IS" WITH ALL FAULTS. CISCO AND THE ABOVE-NAMED SUPPLIERS DISCLAIM ALL WARRANTIES, EXPRESSED OR IMPLIED, INCLUDING, WITHOUT LIMITATION, THOSE OF MERCHANTABILITY, FITNESS FOR A PARTICULAR PURPOSE AND NONINFRINGEMENT OR ARISING FROM A COURSE OF DEALING, USAGE, OR TRADE PRACTICE.

IN NO EVENT SHALL CISCO OR ITS SUPPLIERS BE LIABLE FOR ANY INDIRECT, SPECIAL, CONSEQUENTIAL, OR INCIDENTAL DAMAGES, INCLUDING, WITHOUT LIMITATION, LOST PROFITS OR LOSS OR DAMAGE TO DATA ARISING OUT OF THE USE OR INABILITY TO USE THIS MANUAL, EVEN IF CISCO OR ITS SUPPLIERS HAVE BEEN ADVISED OF THE POSSIBILITY OF SUCH DAMAGES.

Cisco and the Cisco Logo are trademarks of Cisco Systems, Inc. and/or its affiliates in the U.S. and other countries. A listing of Cisco's trademarks can be found at [www.cisco.com/go/trademarks](http://www.cisco.com/go/trademarks). Third party trademarks mentioned are the property of their respective owners. The use of the word partner does not imply a partnership relationship between Cisco and any other company. (1005R)

Any Internet Protocol (IP) addresses and phone numbers used in this document are not intended to be actual addresses and phone numbers. Any examples, command display output, network topology diagrams, and other figures included in the document are shown for illustrative purposes only. Any use of actual IP addresses or phone numbers in illustrative content is unintentional and coincidental.



On our web site you will find an overview of the worldwide Cisco contacts.

Go to: <http://www.cisco.com/web/siteassets/contacts/index.html>

Corporate Headquarters  
Ciso Systems, Inc.  
170 West Tasman Dr.  
San Jose, CA 95134 USA