



Industrial Engineering and Management at KTH

The webinar starts soon!



Industrial Engineering and Management at KTH



Today's hosts



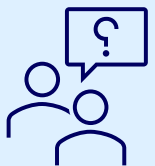
Anna Jerbrant
Vice Head of the School
Associate Professor at the department
of Industrial economics and management



Theo
Master's student in
Integrated Product Design Engineering

Agenda

- Introduction to Industrial Engineering and Management at KTH
- Education and programmes
- Connection to industry
- Research
- Career after KTH



Ask current students your questions using the Q&A





Industrial Engineering and Management at KTH

Focus on the development of societal services, products, materials and production processes in ways that are technically cutting-edge, economically profitable and sustainable

KTH ranks in the top 40 worldwide within the topic of Materials Science



KTH Flemingsberg

KTH Solna

Industrial Engineering
and Management

Royal national park

Sports centre

Student union

Library

KTH Entré

Public transport

Courtyard





Studying a master's programme in Industrial Engineering and Management



12 master's programmes in the subject area cover manufacturing, energy, mechanical engineering and industrial management aspects

Master's programmes

- Engineering Materials Science
- Industrial Management
- Integrated Product Design
- Machine Design
- Mechatronics
- Production Engineering and Management
- Sustainable Energy Engineering
- Sustainable Production Development
- Technology-based Entrepreneurship





Joint master's programmes

- Decentralized Smart Energy Systems
DENSYS (Joint Erasmus+)
- Innovative Sustainable Energy Engineering
(Joint Nordic Five Tech)
- Environmental Pathways for Sustainable
Energy Systems SELECT
(Joint EIT InnoEnergy)

How to apply

1. Choose your programmes at kth.se/master
2. Check the admission requirements
3. Apply at universityadmissions.se
15 January
4. Submit documents
3 February
5. Pay the application fee (if required)
3 February
6. Check the admission results
27 March



Webinar: Application insights with Q&A
5 December, 14:00 CET



Connection to industry



//

One of the best aspects of my programme is the opportunities to work with industry companies both during the thesis and within certain courses.

Theo – MSc Integrated Product Design



//

I was also impressed by the university's reputation for research innovation and its connections with various industries and organisations.

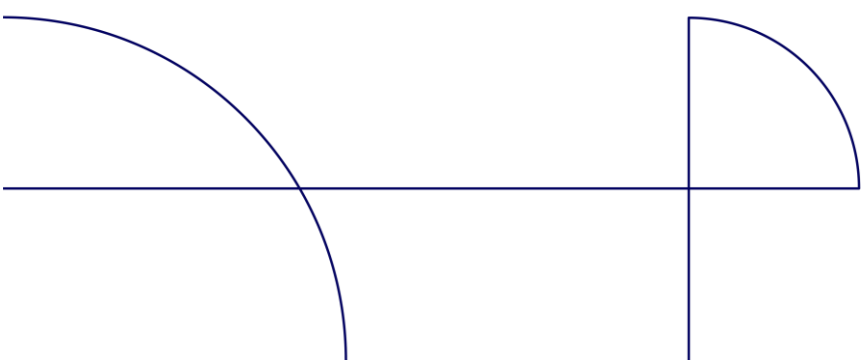
Sansidha – MSc Industrial Management



//

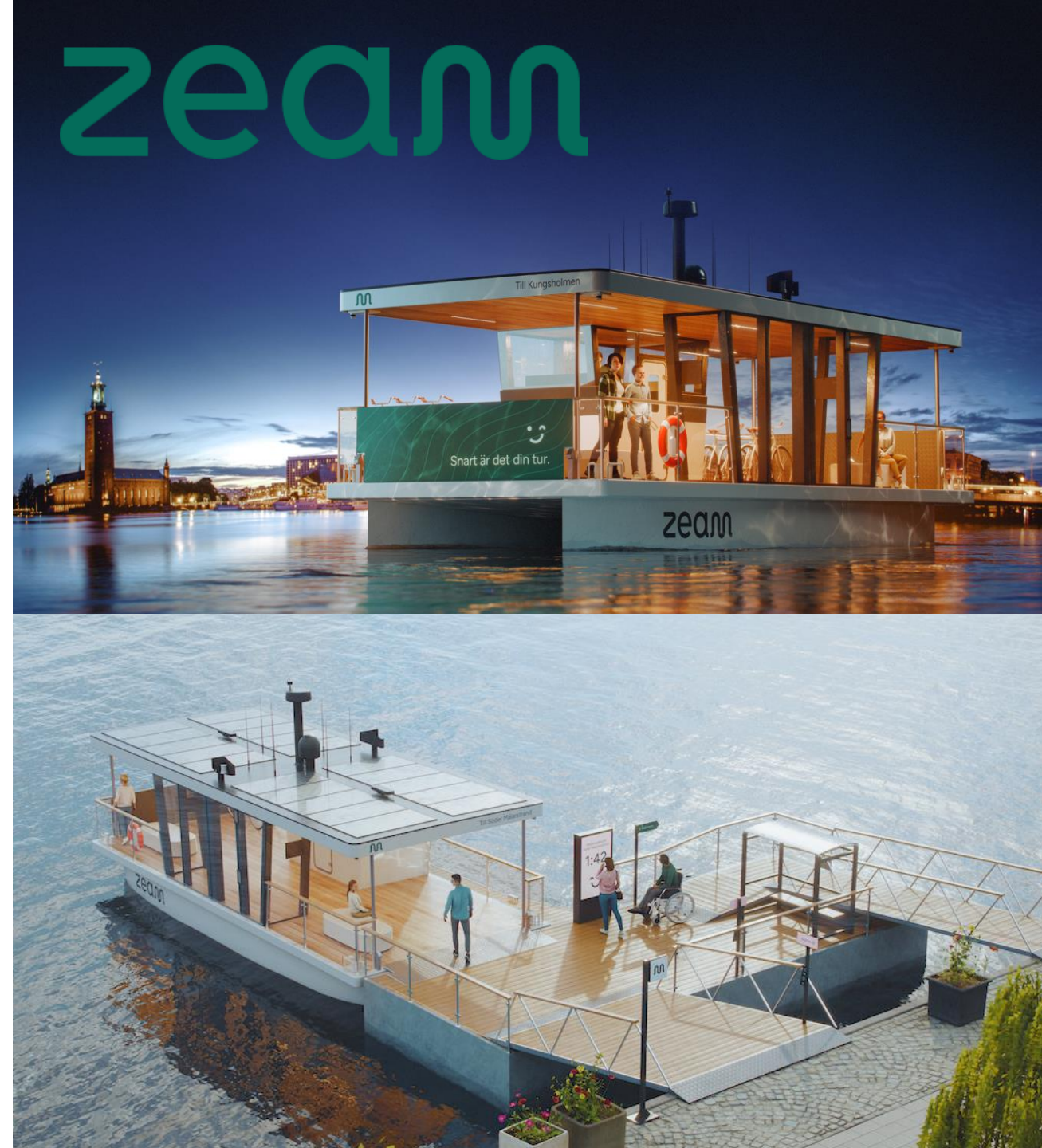
The emphasis on guest lectures and industry collaborations at KTH offers practical insights into real-world applications.

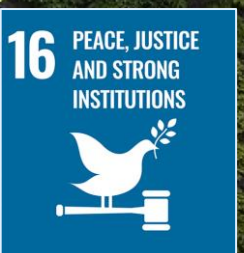
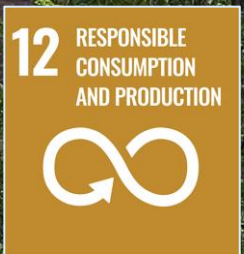
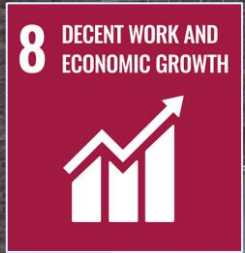
Ilias – Production Engineering and Management



Connection to industry: student perspective

- Zero Emissions Autonomous Mobility
- The worlds first autonomous passenger commercial ferry
- Designing docking system and ticket machine
- Potential for future work

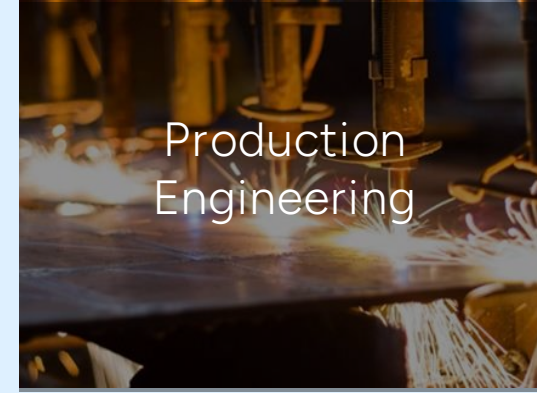




KTH is ranked 72 world-wide for sustainable development in THE Impact Rankings 2024

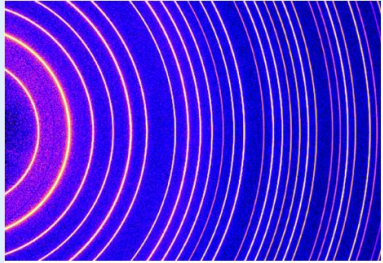


Our departments





Ongoing research



Center for X-rays in Swedish materials science (CeXS)

CeXS is engaging material science researchers in the opportunities of using high-energy x-rays, and aim to strengthen international collaborations in the field.



Climate Action Centre

KTH Climate Action Centre is a multi-disciplinary, collaborative and research-focused centre aiming to advance climate mitigation and adaptation in synergy with all the UN Sustainable Development Goals.



Design and Management of Manufacturing Systems (DMMS)

DMMS is a center of excellence in the field product development with a focus on production. In close collaboration with its partners Scania, Sandvik, Swerea IVF and Chalmers MCR, they spread competence within areas like advanced component manufacturing, methodology and digital production support.



NEutron and X-ray science for industrial Technology transitions (NEXT)

The new Vinnova Sustainable Industry competence centre, NEutron and X-ray science for industrial Technology transitions (NEXT), will co-create materials innovations for enabling sustainable industry transitions – using large scale neutron and synchrotron infrastructures (LSIs) as an enabling technology.



Integrated Transport Research Lab (ITRL)

ITRL is a multidisciplinary and multi-stakeholder arena. Our mission is to explore sustainable mobility solutions that greatly reduce CO2 emissions and are economically viable and socially accepted.



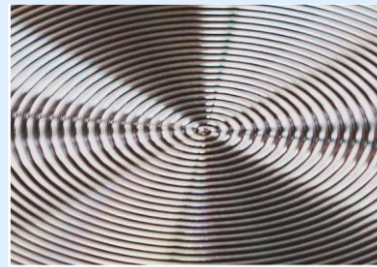
KTH Live-In Lab

The KTH Live-In Lab platform of multiple testbeds can handle many different potential products and services, both separately and combined in a real system.



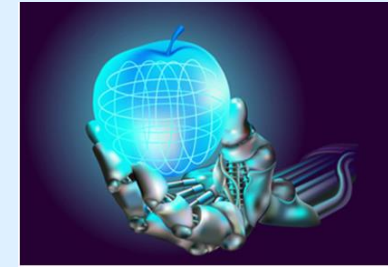
Lean Center

Competence center with a focus on management and systematic improvement of work processes and organizations. Lean Center is a link between research, business and the public sector, and offers education, seminars and qualified coaching.



Center for Mechanics and Materials (MMD)

The Center brings together the two disciplines Mechanics and Materials Science in order to speed up the processes for producing better materials. The long-term goal is a renewed and strengthened education at the basic, advanced and research levels in the field



KTH:s center in Embedded systems (ICES)

ICES involves members from several KTH schools working closely with a wide range of industrial partners. The aim is to tackle the issues faced by those researching and working in the increasingly complex field of embedded systems today.



Trustworthy Edge Computing Systems and Applications (TECoSA)

To provide safe and secure edge computing technology. Edge computing is a new computer level located between the devices/embedded systems and the cloud, on the "edge of the cloud" . Has 13 industrial partners.

Doctoral studies

- 12% of international students go on to PhD studies at KTH or other renowned universities
- Three years of full-time research and one year of courses
- Employment with monthly salary
- One year of teaching, preferably master's students

Career after KTH

- 7 of 10 students get their dream job with a degree from KTH
- Over 50 % receive job offers before graduation
- 20 % get their first job through degree projects



KTH is ranked 70 among universities globally in the QS Graduate Employability Ranking 2022



Upcoming in-person and digital events

- Webinars
 - Programme-specific
 - Application insights with Q&A
- Regional events around the world



Register at www.kth.se/meet



Instagram: KTHUniversity
LinkedIn: KTH Royal Institute of Technology
Newsletter and blog: www.kth.se/follow
Weibo: KTHUniversity
WeChat: KTH-China
Xiaohongshu: KTH瑞典皇家理工学院



Nicolás from Spain
Engineering Materials
Science

[Connect with Nicolás](#)



Sansidha from India
Industrial Management

[Connect with Sansidha](#)



Theo from the Netherlands
Integrated Product Design
(Industrial Design
Engineering track)

[Connect with Theo](#)



Praneet from South Africa
Integrated Product Design
(Innovation Management
and Product Development
track)

[Connect with Praneet](#)



Aniruddh from India
Machine Design

[Connect with Aniruddh](#)



Ilias from Greece
Production Engineering and
Management

[Connect with Ilias](#)



Mada from Indonesia
Sustainable Energy
Engineering

[Connect with Mada](#)



Vaibhavi from India
Technology-based
Entrepreneurship

[Connect with Vaibhavi](#)

At www.kth.se/ask you can ask questions to current KTH students in Industrial Engineering and Management



Thank you for joining this webinar

The Q&A will remain open until all the questions that you have sent in are answered.

Head over to www.kth.se/meet to register for upcoming webinars

