



SCI News

A month has now passed since the Russian invasion of Ukraine. The scientific community has expressed solidarity with Ukrainian colleagues, and activity with aid initiatives is accelerating. You can find details of local work reported below. I am pleased to report that SCI and ITM will soon jointly host a researcher supported by a grant from SSF. I hope that we can help many more Ukrainian researchers find a scientific home outside their country.

On 21st March the School hosted the KTH President, vice-President and the University Director for their annual visit. We proudly showed off our new premises at AlbaNova and talked about current challenges within education and research. Below you can find a more detailed account of the visit.

KTH faces several challenges of central importance for its future development. Two areas where significant development is planned are the administration (GVS) and premises. Once details become clearer, SCI plans to hold a continued open discussion on these upcoming changes. I look forward to your participation in actively shaping

our common working environment!

Finally, I am very pleased to note that the research environments at our school continue to flourish. As you can read about below, the latest example is two ERC Consolidator Grants being recently awarded in the area of Engineering Mechanics.

Sandra Di Rocco

Professor

Dean of the Faculty of Engineering Sciences



President, Deputy President and University director's visit at SCI 2022

Sigbritt Karlsson, Mikael Östling and Kerstin Jacobsson, who are the President, Deputy President, and University director of KTH, respectively, visited our School this month. Together with several members of the faculty, they had a tour in the AlbaNova building and a visit at 3 labs of KTH that belong to the same premises.

[Read more](#)

Interview with Liviana Palmisano

Liviana Palmisano, recently appointed as an associate professor in mathematics with a specialization in



mathematical analysis, speaks to us about her work, career and plans.

[Read more](#)



Interviewing Laura Marimon Giovannetti

We talked to Laura, recently appointed as an affiliate faculty at KTH, regarding her work, career, and future plans.

[Read more](#)

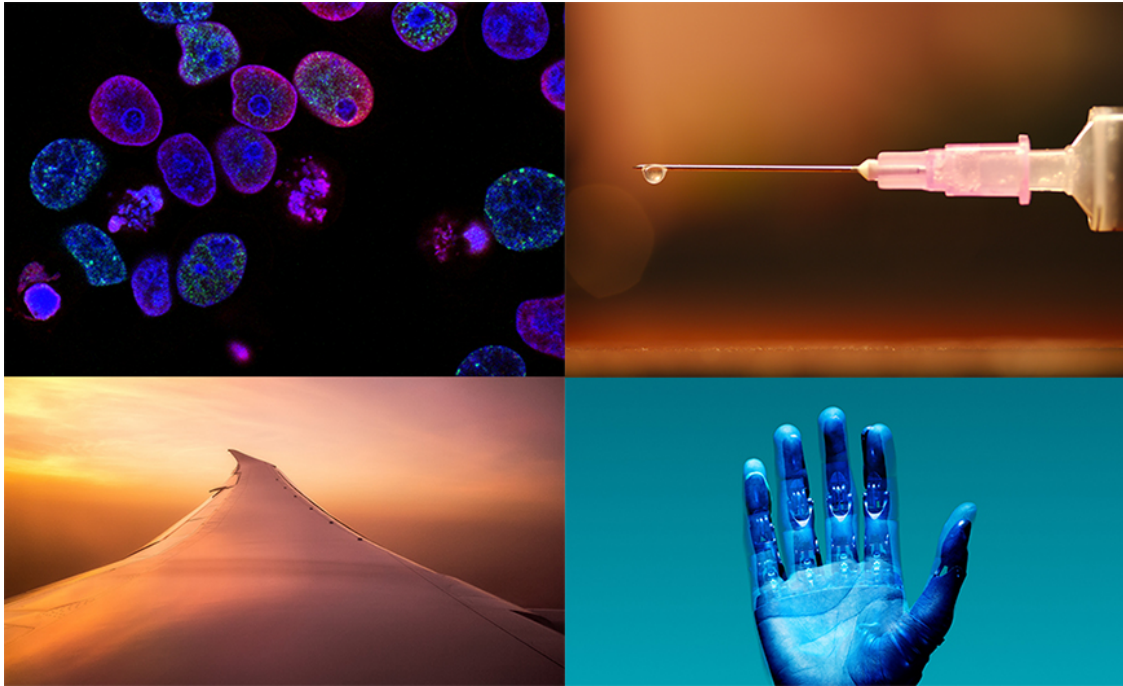


MedTechLabs facilities in BioClinicum, Karolinska University hospital

News from MedTechLabs – a multidisciplinary research centre hosted at SCI

Sweden has long been a pioneer in innovative medical technology solutions for the healthcare sector. Swedish innovations such as the pacemaker, the Gamma Knife, the ultrasound and the Seldinger technique were all developed to meet the needs of healthcare, often based upon successful collaboration between healthcare, academia and industry. MedTechLabs is successfully nurturing that legacy.

[Read more](#)



Four KTH projects receive large EU grants among them Lisa Prah Wittberg and Ricardo Vinuesa received ERC consolidator grants.

When the European Research Council now announces which European researchers will receive the ERC Consolidator Grants 2021, it is clear that 313 will each receive a grant. Two of the researchers are members of our School and they receive between 1.86 and 2 million euros each for five years.

[Read more](#)



Lisa Prah Wittberg, professor at the Department of



Ricardo Vinuesa, senior lecturer at the Department

The research project fitsCAN aims to study different cannulation techniques and placement strategies in treatment with hemodialysis or extracorporeal membrane oxygenation (ECMO) where the blood is purified or oxygenated outside the body.

Reduced fuel consumption and reduced emissions from air travel through improved aerodynamic performance of aircraft wings' aerodynamic performance. This is the goal of the DEEPCONTROL project for which Ricardo Vinuesa at the Department of Fluid Mechanics and Technical Acoustics at KTH receives the ERC Consolidator Grant.



New news feed gives more researchers at KTH the opportunity to reach out

A news feed service is now being launched on kth.se. Via the Researchers' Noticeboard, KTH researchers can reach out with research news that is not picked up on the main news feed.

[Read more](#)

[Form to submit news](#)



On the way to one KTH

The University Administration and the support services at our schools merge to create an even more clear, cost-effective, and accessible support. This is the basic idea in the decision that Sigbritt Karlsson, President of KTH, made about joint and coordinated support services.

Read the interview with President Sigbritt Karlsson [here](#)

Read the article Joint and coordinated support services at KTH [here](#)



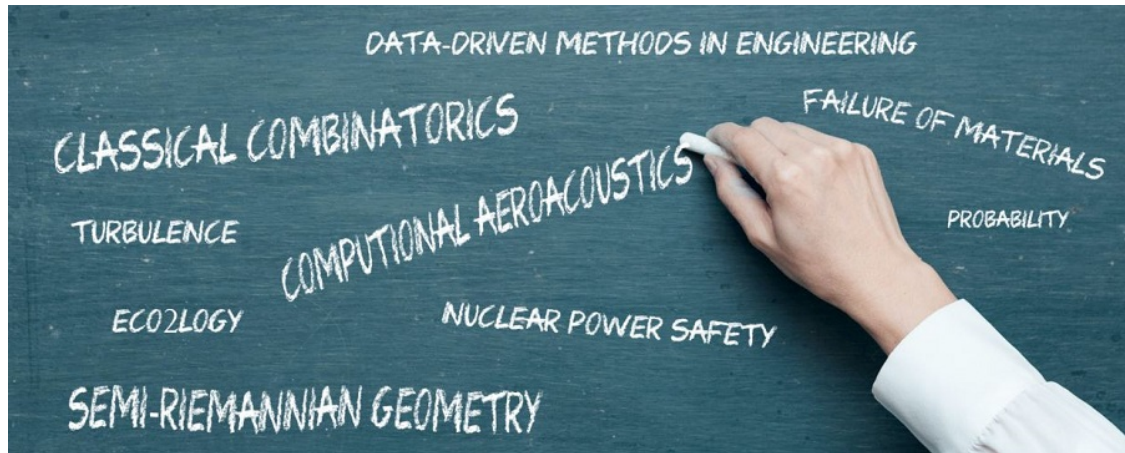
University Director Kerstin Jacobsson is in charge of the work towards a new organisation.

Next step towards coordinated support services

Following the President's Decision last week that we should have coordinated and common support services, work is now in full flow to take stock of what our support

services look like today.

[Read more](#)



Course information for doctoral students

Here is a concise way to get information for future courses for doctoral students. There is information available both for each department and regarding general courses that might be of interest, which are not included in the list provided by each department.

Take a look!

[Read more](#)

22

April, Deadline

Four PhD-students in Mathematics, Mechanics, Physics, Applied Physics

The School of Engineering Sciences announces four doctoral positions, within a centrally funded initiative. Admission will take place during the second half of 2022. The positions refer to doctoral studies at the departments of Physics, Applied Physics, Mathematics or Engineering Mechanics at the SCI

2

May, Deadline

Apply for funding to employ a doctoral student together with an international partner university

As a researcher at KTH, you now have the opportunity to apply for partial funding of SEK 500,000 per year during a four-year period to employ a doctoral student together with one of KTH's international partner universities.

[Read more](#)

school within a doctoral program at the school.

[Read more](#)



Photo by Patrik Lundmark

Sustainable Fashion Day

Welcome to a day of fashion, sustainability, and innovation! See game-changing innovations in the Fashiontech Expo and clothes in new ways in the fashion show! Hear from experts and see some of the latest research from KTH destined to transform the fashion industry.

When: 6 April 2022

Where: Teknikringen 1

[Read more](#)

Installation ceremony and lecture by the 2020 Tage Erlander Professor Zhi-Xun Shen

Title: In Search for the Next Magic Stone

Who: Zhi-Xun Shen

Where: FR4 (Oskar Kleins auditorium), Roslagstullsbacken 21

When: **11 April 2022** at 15.30

[Read more](#)

Knut & Alice Wallenberg Mathematics Programme Grant

In order for Sweden to regain an international, cutting-edge position in Mathematics, the Knut and Alice Wallenberg Foundation, in cooperation with the Royal Swedish Academy of Sciences, will support prominent researchers in Mathematics during 2014-2029. The funding amounts to a total of SEK 650 million.

The mathematics department has been very successful in the applications for grants from the Program for Mathematics in the Knut and Alice Wallenberg Foundation. Eight out of fifteen grants go to KTH.

Eric Ahlqvist, Isabel Haasler, Jeroen Hekking, Johan Wärnegård, as well as Sandra Di Rocco, Lilian Matthiesen, David Rydh and Antonio Lerario.

Congratulations to all of them!

[Read more](#)

ERASMUS+ International exchange for employees

Both teachers and administrative staff at KTH have the possibility of international exchange. Funds are available for financing the majority of travel and accommodation costs within programs such as Erasmus + and Linnaeus-Palme. The programs are handled by International Relations Office at KTH. The invitations are presented on the Swedish page and they are in English.

[Read more](#)

Industrial Transformation Platform call

The KTH Industrial Transformation Platform supports activities during 2022 aimed at increasing the chance of success for KTH researchers to compete in external calls for research funding, especially from the EU. The call opens on 28 February and closes on 2 May 2022.

- Application deadline **2 May 2022**

[Read more](#)



Gender Dimension in Physics and Math-Intensive Research and Teaching

This conference is organized in the frame of the GENERA Network and shall define a starting point in tackling this major challenge and help defining a convincing approach to get into the mindset that a diversity and gender perspective must be present in these fields of science since teaching, defining

research topics, performing research and its application are (wo)man-made.

[Register here](#)

SCI PhD Student Council

Dear doctorands of SCI,

We want to drive your attention to the updated [KTH intranet page](#) where reliable course information can be found. Here, you may read up on what PhD-level courses are actively given, and when. This is also found on our [FAQ page](#), alongside other information that you may find useful concerning your studies and employment. You are always welcome to contact us at sci-council@dr.kth.se should you not find what you are looking for!

It has also been established that council meetings should be open for all students to attend! Does this sound interesting to you? All you need to do is fill in this [form](#) and we will reach out to you with information about how to join. Of course, you are also welcome to present a topic for discussion. In that case, we kindly ask you to state this in the form, so that time may be allocated for it at the meeting. Note that minutes are taken and are available for everyone to read on the council's [KTH social page](#). As always, we value your feedback. Let's work together and make Ph.D. student life better!



We Congratulate

Nacira Agram (Department of Mathematics) has been appointed as an associate professor in mathematics with a specialization in mathematical statistics, started in March 2022.

Ali Elshaari (Department of Applied Physics) has been appointed as a docent in physics with a specialization in quantum technology, started in March 2022.

Recent Doctoral Graduates

Visakh V Krishna (Vehicle and Maritime Engineering), Long freight trains and long-term rail surface damage.

Susumu Yada (Engineering Mechanics) Rapid wetting - influence of surface geometry and fluid properties.

Ali Yousefi (Engineering Mechanics) Transport and mixing by finite-size particles in turbulent flows.

Huan Liu (Physics, Nuclear Engineering) *Ab initio* driven modeling of advanced nuclear fuels.

[FOLLOW US ON SOCIAL MEDIA](#)



School of Engineering Sciences (SCI)

www.kth.se

info@kth.se