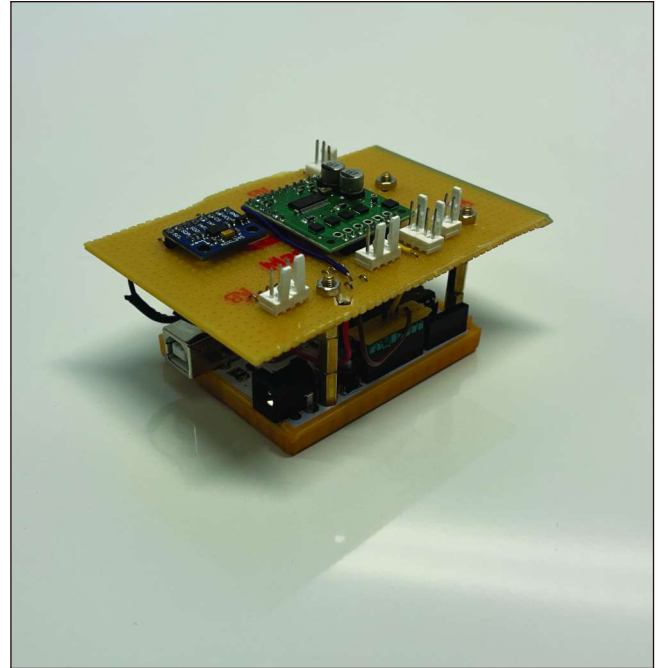


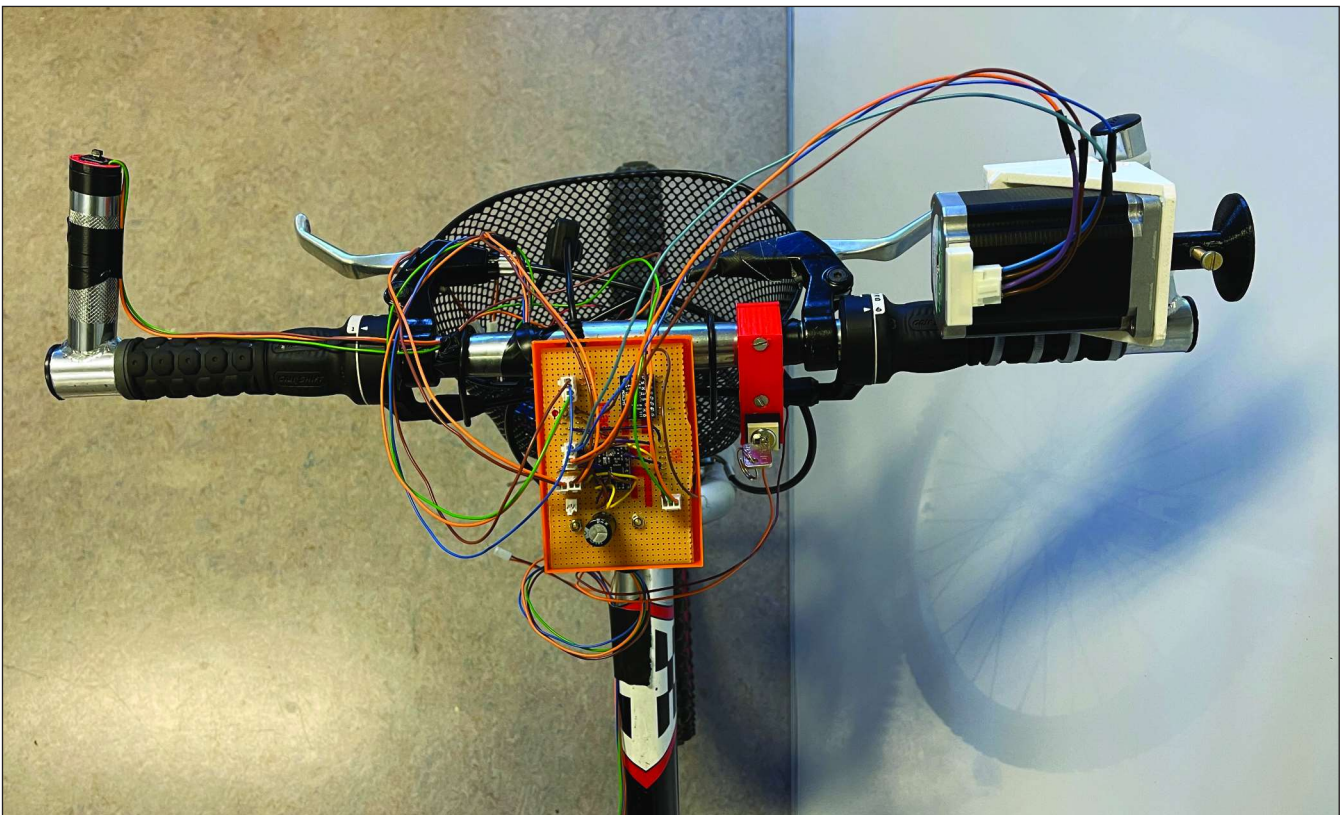
Anti-lock braking system for bicycles



Ultra sonic sensor detects if the wheel is spinning or not.



Arduino with blank PCB on top. Motor driver & accelerometer soldered to PCB.



Drivers view of the bicycle. A steel rod with a string at the end was used to extend the brake handle on the right. The string was then attached to the screw on the stepper motor shaft.

Kristian Jandric
Lucas Andersson



KTH Industriell teknik
och management